



2025 ANNUAL SECURITY REPORT

San José – Evergreen Community College
District Police Department





TABLE OF CONTENTS

A MESSAGE FROM THE CHIEF	3
THE JEANNE CLERY ACT	4
<i>What is the “Jeanne Clery” Disclosure Act?</i>	4
<i>Policy for Reporting the Annual Disclosure of Crime Statistics</i>	4
<i>Megan’s Law</i>	5
STUDENT HEALTH SERVICES	6
<i>A Drug-Free Campus</i>	6
<i>A Drug-Free Campus – Legal Sanctions</i>	7
<i>Disciplinary Actions and Sanctions</i>	8
FACILITY SECURITY	8
POLICE AND OTHER EMERGENCY SERVICES	9
CRIME PREVENTION	9
<i>Personal Safety</i>	10
<i>Crime Prevention Measures</i>	10
<i>Reporting Sexual Assault</i>	11
<i>Reporting Procedures</i>	12
<i>Title IX – Sexual Discrimination/Harassment</i>	12
POLICE FUNCTIONS	14
<i>Assistance and Safety Escorts</i>	14
<i>Parking Enforcement</i>	14
<i>Criminal Investigations</i>	14
<i>Sex Offender Registration</i>	15
<i>Missing Student Notification Procedure</i>	16
SAN JOSÉ CITY COLLEGE MAP	17
SAN JOSÉ CITY COLLEGE CRIMINAL OFFENSE STATISTICS	18
SAN JOSÉ CITY COLLEGE HATE CRIME STATISTICS	19
SAN JOSÉ CITY COLLEGE VAWA, ARREST, AND DISCIPLINARY ACTION STATISTICS	23
SJECED MILPITAS EXTENSION MAP	24
SJECED MILPITAS EXTENSION CRIMINAL OFFENSE STATISTICS	25
SJECED MILPITAS EXTENSION HATE CRIME STATISTICS	26
SJECED MILPITAS EXTENSION VAWA, ARREST, AND DISCIPLINARY ACTION STATISTICS	27
EVERGREEN VALLEY COLLEGE MAP	28
EVERGREEN VALLEY COLLEGE CRIMINAL OFFENSE STATISTICS	29
EVERGREEN VALLEY COLLEGE HATE CRIME STATISTICS	30
EVERGREEN VALLEY COLLEGE VAWA, ARREST, AND DISCIPLINARY ACTION STATISTICS	33
CRIME DEFINITIONS	34



A MESSAGE FROM THE CHIEF

I would like to extend a warm welcome to all new and returning faculty, staff and students from the San José – Evergreen Community College District (SJECCD). Your safety is the primary concern of Police Services as students fulfill your educational goals, faculty provide exceptional instruction and staff provide necessary support and services. As members of this outstanding educational community, we all share the responsibility to collaboratively work together to maintain the safest work and learning environment possible.

Police Services is available every calendar day to provide law enforcement services and protect all persons and property, district wide. We are a fully accredited, POST participating agency within the State of California whose authority is granted from 830.32 of the California Penal Code. Our staff prides itself on its community-oriented approach to solving problems and enforcing laws.



In addition to law enforcement services, Police Services provides crime prevention and personal safety programs throughout the District. Police Services maintains two stations within the city of San José. Their locations are as follows:

- **Evergreen Valley College – Central Utilities Building**
3095 Yerba Buena Road, San José, CA 95135
- **San José City College – Student Center**
2100 Moorpark Avenue, San José, CA 95128

It is our hope that you find the information in this report useful and relevant, during your time on District properties. This report also provides crime statistics as required by the Jeanne Clery Act and is available to any member of the District as well as the public. For further information regarding Police Services or the Jeanne Clery Disclosure of Campus Security Policy and Campus Crime Statistics Act please look at [SJECCD - CLERY ACT ANNUAL SECURITY REPORT](#).

For additional information you may also contact Police Services during our operational hours at 408-270-6468.

Thomas Morales
Chief of Police



THE JEANNE CLERY ACT

What is the “Jeanne Clery” Disclosure Act?

The Jeanne Clery Disclosure of Campus Security Policy and Campus Crime Statistics Act, codified at 20 USC 1092 (f) as a part of the Higher Education Act of 1965, is a federal law that requires colleges and universities to disclose certain timely and annual information about campus crime and security policies. All public and private post-secondary educational institutions participating in federal student aid programs are required to comply with it. The law, originally enacted by Congress in 1990 as the Campus Security Act, was initiated by Howard and Connie Clery after their daughter Jeanne was tragically murdered at Lehigh University in 1986. Amendments to the Act in 1998 renamed it in memory of Jeanne Clery.

The Clery Act requires colleges and universities to publish an annual report every year by October 1st that contains three (3) years of crime statistics and certain policy statements including sexual assault policies which assure basic victims' rights, the law enforcement authority of campus police, and where the students should go to report crimes. The complete text of the Clery Act and the U.S. Department of Education regulations are available on the Security On Campus, Inc. website at www.clerycenter.com.

Policy for Reporting the Annual Disclosure of Crime Statistics

The San José – Evergreen Community College District Police Department is responsible for gathering crime statistics and provide safety information to all students, staff, faculty, visitors, and prospective students and employees.

The Annual Security Report for Evergreen Valley College, San José City College and the entire San José – Evergreen Community College District includes statistics for the previous three years concerning reported crimes that occurred on campus, in certain off-campus buildings or property owned or controlled by the San José – Evergreen Community College District, and on public property within, or immediately adjacent to and accessible from the campus.

In accordance with mandated reporting requirements, information concerning the monitoring and recording of any criminal activity in which students have engaged, at off-campus locations and within student organizations that are officially recognized by the District, are gathered from local police agencies. These agencies include any city, county, state, or federal agencies that may have relevant information. The report also includes institutional policies concerning campus safety and security, such as policies concerning alcohol and drug use, crime prevention, the reporting of crimes, sexual assault and other matters.



THE JEANNE CLERY ACT (cont.)

Police Services is aware that crimes may go unreported to law enforcement for a variety of reasons. Police Services encourages District employees who have significant responsibility for students and student activities to report any crimes that they become aware of. Some groups who may become aware of crimes in their daily contact with students are administrators, vice presidents, deans, directors, department heads, faculty and student advisors, student activity coordinators and athletic coaches. Physicians, psychologists and most clerical staff are examples of employees who are not required to report under the Jeanne Clery Act. All notifications to Police Services can be made confidentially or anonymously in accordance with the reporting person's wishes. Crime prevention and personal safety information and pamphlets are available at any of Police Services' offices or on our [website](#). In addition, Health Services, campus newspapers, and various student and staff publications throughout the District may also contain pertinent information.

Megan's Law

Public information regarding sex offenders in California may be obtained by viewing the Megan's Law website at the Santa Clara Sheriff's Department and/or the San José Police Department websites.



STUDENT HEALTH SERVICES

A Drug-Free Campus

Both the abuse and moderate use of alcohol and illegal drugs can result in injury and death. While chronic problems are associated with long-term abuse, damage can occur from moderate or even a single experimental use of a substance. Alcohol and drug use seriously impair learning and motivation; disrupts the classroom; jeopardizes physical and mental health; subjects an individual to criminal penalties; injures families; erodes relationships; and inhibits the ability to benefit from an education.

San José – Evergreen Community College District therefore asks you to support, maintain, and actively promote a drug-free learning environment by being aware of college policies, referral sources, and the substantial legal, personal, and health consequences associated with use. If you or someone you know is having problems with alcohol or drugs, seek out confidential assistance on-campus, or from a community agency. Consultation, information and referral services regarding drug and alcohol abuse are available at Health Services and Counseling offices at each college. Employees Assistance Programs (EAP) provides substance abuse programs to employees of the District.

Health Consequences

- Even experimental use of a substance may result in:
 - Impaired learning due to poor concentration, fatigue, drowsiness, anxiety, altered perception, confusion, indifference, depersonalization, memory loss, panic attacks, and drug-induced psychiatric problems.
 - Impaired judgment leading to driving under the influence of alcohol/drugs, accident, violent and abusive behavior, criminal acts, financial troubles, unwanted pregnancy, sexually transmitted diseases, acquaintance rape, attempted or accomplished suicide, permanent injury, or death as a result of substance overdose.
- The intravenous use of drugs can result in hepatitis, tetanus, abscesses, and AIDS.
- The use of stimulants can lead to cardiac fibrillation, heart attack, seizures, respiratory arrest and death.
- The most common negative health consequences from occasional drinking are trauma-related (i.e., auto accidents, violent and abusive acts) and involve both the drinker and non-drinking victims.
- Long-term alcohol abuse can cause brain damage, cirrhosis of the liver, hepatitis, permanent in-coordination, ulcer disease, gastritis, pancreatitis, heart disease, stroke, anemia, sexual dysfunction, cancers, and may cause other health problems.



STUDENT HEALTH SERVICES (cont.)

A Drug-Free Campus – Legal Sanctions

As a college student or employee, you are subject to both college rules and regulations and the laws and penalties of the State of California for alcohol/drug offenses. As a student, if you are under the influence of alcohol and/or drugs, or if you are discovered selling, or dispensing drugs on campus or at any college function, you can be suspended, expelled and/or criminally prosecuted. If you are an employee, you may be placed on probation, terminated, and/or criminally prosecuted for the use, sale or possession of illegal drugs and/or alcohol on campus, or at college-sponsored events.

- For a first offense of driving under the influence of alcohol and/or drugs, you may serve 96 hours to six months in jail and pay a fine. It is unlawful for anyone with a blood alcohol content (BAC) level of .08 percent or above to drive a motor vehicle or ride a bicycle.
- For smoking marijuana on campus, you can be required to complete drug education/ counseling, be fined and receive a citation for an infraction violation.
- Unless medically prescribed for a person under 21 years of age, possession of marijuana (28.5 grams or less) can be fined up to \$100 and/or receive a citation for an infraction violation.
- Except as authorized by law, possession of not more than 28.5 grams of cannabis or not more than eight grams of concentrated cannabis or both, shall be punished or adjudicated as follows:
 - (1) Persons under 18 years of age are guilty of an infraction and shall be required to complete four hours of drug education or counseling and up to 10 hours of community service.
 - (2) Persons at least 18 years of age but less than 21 years of age are guilty of an infraction and punishable by a fine of not more than one hundred dollars (\$100).
 - (3) Persons 18 years of age or older who possess more than 28.5 grams of cannabis, or more than eight grams of concentrated cannabis, or both, shall be punished by imprisonment in a county jail for a period of not more than six months or by a fine of not more than five hundred dollars (\$500), or by both that fine and imprisonment.
- For possession of cocaine, you can be imprisoned in a state prison.
- For the sale of any illegal drug, you can be imprisoned in a state prison.
- Any person under the age of 21 years who has any alcoholic beverage in his or her possession on any street or highway or in any public place can be convicted of a misdemeanor.
- It is a misdemeanor crime to sell, give, or furnish alcohol to anyone under 21 years of age.
- Carriers of motor vehicle insurance can increase premiums, cancel or deny renewal as a result of driving under the influence convictions.



STUDENT HEALTH SERVICES (cont.)

Disciplinary Actions and Sanctions

The District Standards of Student Conduct and a Student Grievance Policy describe administrative disciplinary processes, rights and sanctions for students involved in sexual assaults. State statutes, District policies and collective bargaining agreements provide administrative discipline processes for staff members involved in misconduct. Administrative processes are separate from criminal justice processes initiated by the police.

In addition to sustaining criminal penalties, a student or staff member who commits a sex offense on-campus is subject to administrative discipline as severe as expulsion from college or termination of employment.

FACILITY SECURITY

There are no residential facilities on the campuses of San José City College or Evergreen Valley College.

Most campus facilities are unlocked when classes are in session. Facilities are locked and serviced by custodial staff between 10:30 PM and 7:00 AM, Monday thru Friday. Facilities are locked from 3:00 PM Saturday until 7:00 AM Monday unless special arrangements are made for weekend use and communicated to Police Services. Staff members who need to enter facilities during non-business hours and who have not made prior arrangements are required to notify the Police Services of their presence and have proper identification.

This procedure is intended to maximize the security of individuals and facilities and to avoid false intrusion alarm calls and/or trespassing. Custodial and Police Services staff check campus facilities during non-business hours, but it is the responsibility of those who use offices and rooms to lock access doors, turn off lights and close/lock windows upon their departure.

Keys to facilities are provided to staff members upon request and approval of appropriate administrators. Lost keys are to be reported to the authorizing administrator and Police Services. Facility keys are not to be loaned or duplicated. Key duplication is a misdemeanor, per Section 469 of the California Penal Code.

No District equipment or property may be removed from any District property without written permission from an appropriate administrator. Unauthorized removal of District property is a violation of the law that may result in prosecution.



POLICE AND OTHER EMERGENCY SERVICES

Police Services provides patrols and services whenever classes are in session as well as holidays and weekends. San José – Evergreen Community College District Police Officers are vested with full law enforcement powers and responsibilities, identical to the local police or sheriff in your home community. The officers are trained at accredited police academies and receive additional training in first aid, firearms, defensive tactics, legal updates, evidence gathering, and traffic investigations, as outlined by the Commission on Peace Officer Standards and Training. The District maintains a mutual aid policy with the San José Police Department for after-hours incidents and to provide assistance in situations which Police Services does not have proper equipment, expertise or staffing.

District Police Officers are responsible for a full range of public safety services, including all crime reports, investigations, medical emergencies, fire emergencies, traffic accidents, enforcement of laws regulating underage drinking, possession of alcohol on campus, and the use of controlled substances, weapons, gambling and all other incidents requiring police assistance.

Police Services has access to all criminal justice automated information systems and routinely share information on criminal investigations with the San José Police Department, the Santa Clara Sheriff's Office, and other relevant law enforcement agencies for investigative purposes. The serial numbers of property that has been stolen from the campuses is reported through the National Crime Information Center (NCIC). Statistical information regarding crimes on the campuses is reported to the California Department of Justice (DOJ).

CRIME PREVENTION

Police Services provides a number of services to help educate the campus community on how to avoid being a victim of a crime. Printed information is available at Police Services offices on both campuses on various topics, free of charge. An attempt is made to stock the most current publications.

If a campus user has knowledge of a particular publication not in stock that could benefit a substantial campus audience, an attempt will be made to obtain the item upon request. Police personnel are always available during regular business hours to answer questions and make suggestions regarding campus security issues.



CRIME PREVENTION (cont.)

Each person must take steps to avoid being a victim. Remember to keep your car locked and to put valuables in the trunk or take them with you; do not leave valuables in lockers, and always walk in a group or with an escort at night, whenever possible. If you are the victim of a crime, do not tamper with the crime scene and do not delay in calling the police. The sooner the police are called, the better chance of solving the crime. If you happen to see something suspicious, do not hesitate to call the police with a description of the persons, their vehicle and what they are doing. This may save a fellow student or staff member from suffering the fate associated with being a victim. Preventing crime is a team effort. The police are here to serve and assist you, and need your help to maintain a safe campus that is conducive to learning.

Personal Safety

The San José – Evergreen Community College District strives to maintain a safe environment for students, staff, and visitors to pursue educational objectives. However, a truly safe and secure campus can only be achieved with thorough cooperation from all members of our district community.

The District is strongly committed to an educational environment free of sexual assault. The District will vigorously prosecute and discipline any person identified as responsible for sexual assaults. In addition to criminal prosecution, the College may impose discipline against students, student organizations, or College faculty or staff identified as committing or participating in sexual assaults. College discipline includes: expulsion; suspension for a specific time period; or probation for a specific time period.

Discipline proceedings involving students will be processed through the Office of Student Affairs. Discipline proceedings involving faculty or staff members will be processed through the District Human Resources office. Both the accuser and the accused are entitled to the same opportunities to have others present during a campus disciplinary proceeding. Both the accuser and the accused shall be informed of the outcome of any campus proceeding alleging a sexual assault.

Crime Prevention Measures

- Always be vigilant.
- Walk in pairs or groups; avoid isolation.
- Stay in well-lit areas away from potential hiding places.
- Know where you are and where places of refuge are.
- If followed, go toward well-lit areas where there are people.



Crime Prevention Measures (cont.)

- Carry only lightweight objects.
- Wear or carry items like jewelry and cash that are minimal in value and don't attract attention.
- Avoid approaching strangers in vehicles for any reason.
- Carry a whistle or other noisemaker.
- If you think you are in trouble, do anything to attract attention – Scream! Break glass! Sound car horn.
- Consider carrying pepper spray or other lawful self-defense equipment.
- Carry a mobile phone and have law enforcement agencies' numbers preprogrammed.
- Learn self-defense/martial arts if so inclined.

Reporting Sexual Assault

As soon as possible, a survivor should report incidents of sexual assault, including date or acquaintance rape to Police Services, the local police or a College faculty or staff member who can aid in contacting the proper authorities. The Counseling Department and Health Services can also help in contacting the proper authorities. The survivor should make every attempt to preserve any physical evidence of the assault. This may include not showering or bathing, not cleaning the scene of the incident, and not disposing of any damaged clothing, or other items. Police Services will immediately initiate a criminal investigation into on-campus sexual assaults.



Police Services will contact the San José Police Department if highly specialized resources are needed to complete a criminal investigation, or for additional follow-up.

The survivor will be given information on counseling and support groups. If the survivor wishes to change an academic schedule, the appropriate steps will be taken to accommodate the survivor to the full extent possible. The colleges also encourage persons reporting to seek the support and assistance of friends or family when needed, in presenting their concerns. Santa Clara County offers 24-hour counseling for survivors of crimes. The Santa Clara County Valley Rape Crisis Center may be reached at (408) 287-3000. The Victim/Witness Assistance Center in San José also provides off-campus services.

The District procedures can be located at [San José – Evergreen Community College District BoardDocs®](#)



Reporting Procedures

The San José – Evergreen Community College District maintains a police department with police officers available seven days a week. Offenses, accidents or any emergencies that occur on-campus should be reported immediately to Police Services:

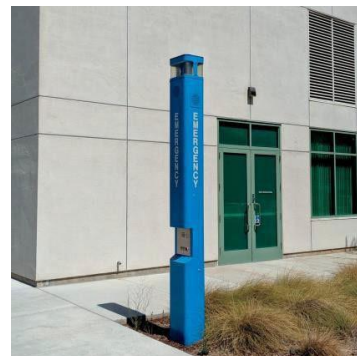
Phone Number: (408) 270-6468

Monday through Friday: 7:00 AM - 11:00 PM

Saturday and Sunday: 7:00 AM - 3:00 PM

Holidays: 7:00 AM - 3:00 PM

Talk-a-Phones or Blue Emergency call boxes are provided at each college, for anyone on campus who needs to solicit emergency assistance.



During hours other than the above, all campus emergencies should be reported by dialing 9-1-1. Telephones or office FAX lines may also be used for 9-1-1 emergency calls. Other telephones in district and college offices and facilities require that 9-9-1-1 be dialed for emergency service. If 9-9-1-1 should fail to work for any reason, the seven-digit emergency number for all City of San José emergency services is (408) 277-8911.

Title IX – Sexual Discrimination/Harassment

Title IX (20 U.S.C. § 1681 et seq.) is a federal law that prohibits discrimination on the basis of sex in educational programs and activities, including academic, educational, extracurricular, athletics and employment. Title IX protects all people regardless of their gender or gender identity from sex discrimination, including sexual harassment and sexual misconduct.

Title IX covered acts:

- Sexual discrimination/harassment
- Sexual misconduct
- Sexual violence (rape, sexual assault, etc.)
- Sexual exploitation
- Sex/gender-based stalking
- Sex/gender-based bullying
- Sex/gender-based hazing
- Intimate partner violence



When sexual violence or sexual harassment is reported and found to have occurred, Title IX requires the District take prompt and effective steps to:

- End the sexual violence/sexual harassment
- Prevent its recurrence, and
- Address its effects, whether or not the sexual violence/sexual harassment is the subject of a criminal investigation.

The San José – Evergreen Community College District, is committed to assisting students who experience incidents of sexual discrimination and harassment. To learn more information about Title IX and resources at our colleges please visit the following websites:

- [SJCC Title IX Information](#)
- [EVC Title IX Information](#)

Students who experience an incident of sexual discrimination/harassment may file a complaint online at [SJECCD - Reporting Procedures](#).

Students who experience sexual discrimination or sexual harassment may experience barriers to their educational goals. Students should discuss potential accommodations and assistance with these issues with their Title IX Coordinators who may be able to assist students overcome these barriers. Each college campus has its own Title IX Coordinator that you can reach out to for more information and for further assistance.

SJCC Title IX Coordinator

William L. Garcia

Vice President of Student Affairs

Student Center, SC-216L

Telephone: (408) 288-3729

Email: William.Garcia@sjcc.edu

Regular business hours: Monday through Friday 8:00 AM - 5:00 PM

EVC Title IX Coordinator

Howard Willis

Vice President of Student Affairs

Office of Student Life, Student Center, SC-205

Telephone: (408) 223-6738

Email: Howard.Willis@evc.edu

Regular business hours: Monday through Friday 8:00 AM - 5:00 PM



POLICE FUNCTIONS

Assistance and Safety Escorts

Police Services will provide assistance with vehicle jump starts, or summoning a tow truck, or locksmith to assist in unlocking your vehicle. We will not attempt to open vehicles due to liability reasons. In a situation such as a child or an animal in a locked car, Police Services may use a reasonable amount of force to enter into a vehicle. We will also assist family members in contacting students who are in class if there is a serious family emergency.



Police Services provides personnel to accompany staff and students to and from their vehicles. This service can be summoned by calling Police Services during operational business hours.

Parking Enforcement

Police Services maintains a Parking Enforcement division primarily staffed by non-sworn Community Service Officers who are tasked to ensure all California State Vehicle Code and District Parking Regulations are adhered to within District jurisdiction. Parking regulations are strictly enforced Monday thru Friday from 7:00 AM to 11:00 PM and Saturday 7:00 AM to 3:00 PM. For more information on the District's policies and regulations, you can visit this link on the [website](#).

Criminal Investigations

Police Services assigns all criminal investigation work to the police officers who are initially assigned to the incident. It is therefore of vital importance that the patrol staff are equally as skilled with investigative techniques as they are with patrol procedures. Some of the following incidents are typical of a police officer's normal investigative assignment and workload.

- Sexual assault and other related sex crimes
- Juvenile crimes
- Domestic violence
- Theft and burglary
- Forgery
- Fraud and other financial crimes
- Terrorist threats
- Annoying and harassing communication



Sex Offender Registration

Section 290 of the California Penal Code requires people convicted of certain sexual offenses to register with the local law enforcement agency responsible for the jurisdiction in which they reside within Five (5) working days of their birthday, and within Five (5) working days of changing their address. Law enforcement cannot dictate where an offender lives, as long as the offender registers his/her/their residence with the appropriate jurisdiction. California law requires sex offenders to register with their local police or sheriff, which places their names in a statewide database. The State of California Registered Sex Offenders database can be accessed at meganslaw.ca.gov. (Complete requirements are listed in Section 290 of the California Penal Code.)

In addition, California Penal Code Section 290.01 requires every person who was convicted of a sex offense to register with the Campus Police Department of a College or University within Five (5) days where he/she/they is:

- Enrolled as a full-time student
- Enrolled as a part-time student
- Employed as a full-time or part-time faculty
- Employed as a full-time or part-time classified employee
- Employed as a volunteer
- A contractor who is contracted by the college or district to work on district property
- A carrier driver who delivers to that College or University more than 14 consecutive days or 30 days in a calendar year (e.g., water delivery, mail, VTA drivers, outreach drivers, armored car drivers, telephone, gas and electricity technicians, computer technicians, office supply drivers, and others)

To support California Penal Code Section 290.01, in California Penal Code 290.03, “the Legislature found and declared that a comprehensive system of risk assessment, supervision, monitoring and containment for registered sex offenders residing in California communities is necessary to enhance public safety and reduce the risk of recidivism posed by these offenders.”

To accomplish this legislative mandate, the San José – Evergreen Community College District Police Department conducts yearly compliance checks with all registered sex offenders while enrolled, employed or volunteer within the District. These compliance checks are designed to ascertain the sex offender’s status with the District, along with any changes to information pertaining to residency, vehicles, as well as changes to their physical appearance.



Sex Offender Registration (cont.)

This section does not relieve the person to register as a sex offender with the jurisdiction where he/she/they is residing. The registrations as a sex offender with the college Police Departments are in addition to the registration with the local police and sheriff's departments.

Anyone needing to register per Section 290 of the California Penal Code must go to Police Services at 3095 Yerba Buena Road, San José, CA 95135, or at 2100 Moorpark Avenue, San José, CA 95128. (Note: Due to the COVID-19 pandemic, please call prior to appearing in-person for laws regarding registration may change without notice.)

Missing Student Notification Procedure

If a person has not returned home, failed to appear for work, class, an appointment as anticipated, or there is a belief that something is suspicious about his or her absence, report the situation to law enforcement.

You need not and should not wait 24+ hours to report a missing person. Anyone can file a missing person report, but campus officials who become aware of a potentially missing student must report information immediately to Police Services.

Pursuant to California Penal Code 14205(a), a law enforcement agency must take a missing person report without delay. When a report is filed with Police Services, a complete and thorough investigation surrounding the incident will be conducted by the appropriate jurisdiction.

In compliance with federal law, during registration, students have the option to specify contact(s) to be notified in the event the police determine someone is a missing person. This contact information is kept confidential and only accessible by authorized college officials for disclosure to law enforcement personnel during a missing person investigation.

Federal law also requires the college to inform students that an emergency contact will be notified within 24 hours of a person being determined as missing. For non-emancipated minors, a custodial parent or guardian will be notified in addition to any listed emergency contact(s).

The college may make additional notifications as necessary, and as provided for by FERPA, to resolve a safety emergency; including notifying parents or guardians, even when they were not specifically listed by a student as an emergency contact.



San José – Evergreen Community College District Police Department

SAN JOSÉ CITY COLLEGE MAP





San José – Evergreen Community College District Police Department

SAN JOSÉ CITY COLLEGE CRIMINAL OFFENSE STATISTICS

Criminal Offenses – On Campus

Criminal Offense	Total Occurrences – On Campus		
	2022	2023	2024
a. Murder/Non-negligent manslaughter	0	0	0
b. Negligent manslaughter	0	0	0
c. Sex offenses – Forcible	0	0	0
d. Rape	0	0	0
e. Fondling	0	0	0
f. Sex offenses – Non-forcible	0	0	0
g. Incest	0	0	0
h. Statutory rape	0	0	0
i. Robbery	0	0	0
j. Aggravated assault	0	0	1
k. Burglary	14	2	7
l. Motor vehicle theft	0	0	1
m. Arson	0	3	1

Criminal Offenses – Public Property

Criminal Offense	Total Occurrences – Public Property		
	2022	2023	2024
a. Murder/Non-negligent manslaughter	0	0	0
b. Negligent manslaughter	0	0	0
c. Sex offenses – Forcible	0	0	0
d. Rape	0	0	0
e. Fondling	0	0	0
f. Sex offenses – Non-forcible	0	0	0
g. Incest	0	0	0
h. Statutory rape	0	0	0
i. Robbery	0	0	0
j. Aggravated assault	0	0	0
k. Burglary	0	0	0
l. Motor vehicle theft	0	3	0
m. Arson	0	0	0



San José – Evergreen Community College District Police Department

SAN JOSÉ CITY COLLEGE HATE CRIME STATISTICS

Hate Crimes – On Campus (2024)

Occurrences of Hate Crimes									
Category of Bias for Crimes Reported in 2024									
Criminal Offense	2024 Total	Race	Religion	Sexual Orientation	Gender	Gender Identity	Disability	Ethnicity	National Origin
a. Murder/Non-negligent manslaughter	0	0	0	0	0	0	0	0	0
d. Rape	0	0	0	0	0	0	0	0	0
e. Fondling	0	0	0	0	0	0	0	0	0
g. Incest	0	0	0	0	0	0	0	0	0
h. Statutory rape	0	0	0	0	0	0	0	0	0
i. Robbery	0	0	0	0	0	0	0	0	0
j. Aggravated assault	0	0	0	0	0	0	0	0	0
k. Burglary	0	0	0	0	0	0	0	0	0
l. Motor vehicle theft	0	0	0	0	0	0	0	0	0
m. Arson	0	0	0	0	0	0	0	0	0
n. Simple assault	0	0	0	0	0	0	0	0	0
o. Larceny – theft	0	0	0	0	0	0	0	0	0
p. Intimidation	0	0	0	0	0	0	0	0	0
q. Destruction/damage/vandalism of property	0	0	0	0	0	0	0	0	0

Hate Crimes – On Campus (2023)

Occurrences of Hate Crimes									
Category of Bias for Crimes Reported in 2023									
Criminal Offense	2023 Total	Race	Religion	Sexual Orientation	Gender	Gender Identity	Disability	Ethnicity	National Origin
a. Murder/Non-negligent manslaughter	0	0	0	0	0	0	0	0	0
d. Rape	0	0	0	0	0	0	0	0	0
e. Fondling	0	0	0	0	0	0	0	0	0
g. Incest	0	0	0	0	0	0	0	0	0
h. Statutory rape	0	0	0	0	0	0	0	0	0
i. Robbery	0	0	0	0	0	0	0	0	0
j. Aggravated assault	0	0	0	0	0	0	0	0	0
k. Burglary	0	0	0	0	0	0	0	0	0
l. Motor vehicle theft	0	0	0	0	0	0	0	0	0
m. Arson	0	0	0	0	0	0	0	0	0
n. Simple assault	0	0	0	0	0	0	0	0	0
o. Larceny – theft	0	0	0	0	0	0	0	0	0
p. Intimidation	0	0	0	0	0	0	0	0	0
q. Destruction/damage/vandalism of property	0	0	0	0	0	0	0	0	0



San José – Evergreen Community College District Police Department

SAN JOSÉ CITY COLLEGE

HATE CRIME STATISTICS (cont.)

Hate Crimes – On Campus (2022)

Occurrences of Hate Crimes									
Category of Bias for Crimes Reported in 2022									
Criminal Offense	2022 Total	Race	Religion	Sexual Orientation	Gender	Gender Identity	Disability	Ethnicity	National Origin
a. Murder/Non-negligent manslaughter	0	0	0	0	0	0	0	0	0
d. Rape	0	0	0	0	0	0	0	0	0
e. Fondling	0	0	0	0	0	0	0	0	0
g. Incest	0	0	0	0	0	0	0	0	0
h. Statutory rape	0	0	0	0	0	0	0	0	0
i. Robbery	0	0	0	0	0	0	0	0	0
j. Aggravated assault	0	0	0	0	0	0	0	0	0
k. Burglary	0	0	0	0	0	0	0	0	0
l. Motor vehicle theft	0	0	0	0	0	0	0	0	0
m. Arson	0	0	0	0	0	0	0	0	0
n. Simple assault	0	0	0	0	0	0	0	0	0
o. Larceny – theft	0	0	0	0	0	0	0	0	0
p. Intimidation	0	0	0	0	1	0	0	0	0
q. Destruction/damage/vandalism of property	0	0	0	0	0	0	0	0	0





San José – Evergreen Community College District Police Department

SAN JOSÉ CITY COLLEGE

HATE CRIME STATISTICS (cont.)

Hate Crimes – Public Property (2024)

Occurrences of Hate Crimes									
Category of Bias for Crimes Reported in 2024									
Criminal Offense	2024 Total	Race	Religion	Sexual Orientation	Gender	Gender Identity	Disability	Ethnicity	National Origin
a. Murder/Non-negligent manslaughter	0	0	0	0	0	0	0	0	0
d. Rape	0	0	0	0	0	0	0	0	0
e. Fondling	0	0	0	0	0	0	0	0	0
g. Incest	0	0	0	0	0	0	0	0	0
h. Statutory rape	0	0	0	0	0	0	0	0	0
i. Robbery	0	0	0	0	0	0	0	0	0
j. Aggravated assault	0	0	0	0	0	0	0	0	0
k. Burglary	0	0	0	0	0	0	0	0	0
l. Motor vehicle theft	0	0	0	0	0	0	0	0	0
m. Arson	0	0	0	0	0	0	0	0	0
n. Simple assault	0	0	0	0	0	0	0	0	0
o. Larceny – theft	0	0	0	0	0	0	0	0	0
p. Intimidation	0	0	0	0	0	0	0	0	0
q. Destruction/damage/vandalism of property	0	0	0	0	0	0	0	0	0

Hate Crimes – Public Property (2023)

Occurrences of Hate Crimes									
Category of Bias for Crimes Reported in 2023									
Criminal Offense	2023 Total	Race	Religion	Sexual Orientation	Gender	Gender Identity	Disability	Ethnicity	National Origin
a. Murder/Non-negligent manslaughter	0	0	0	0	0	0	0	0	0
d. Rape	0	0	0	0	0	0	0	0	0
e. Fondling	0	0	0	0	0	0	0	0	0
g. Incest	0	0	0	0	0	0	0	0	0
h. Statutory rape	0	0	0	0	0	0	0	0	0
i. Robbery	0	0	0	0	0	0	0	0	0
j. Aggravated assault	0	0	0	0	0	0	0	0	0
k. Burglary	0	0	0	0	0	0	0	0	0
l. Motor vehicle theft	0	0	0	0	0	0	0	0	0
m. Arson	0	0	0	0	0	0	0	0	0
n. Simple assault	0	0	0	0	0	0	0	0	0
o. Larceny – theft	0	0	0	0	0	0	0	0	0
p. Intimidation	0	0	0	0	0	0	0	0	0
q. Destruction/damage/vandalism of property	0	0	0	0	0	0	0	0	0



San José – Evergreen Community College District Police Department

SAN JOSÉ CITY COLLEGE

HATE CRIME STATISTICS (cont.)

Hate Crimes – Public Property (2022)

Occurrences of Hate Crimes									
Category of Bias for Crimes Reported in 2022									
Criminal Offense	2022 Total	Race	Religion	Sexual Orientation	Gender	Gender Identity	Disability	Ethnicity	National Origin
a. Murder/Non-negligent manslaughter	0	0	0	0	0	0	0	0	0
d. Rape	0	0	0	0	0	0	0	0	0
e. Fondling	0	0	0	0	0	0	0	0	0
g. Incest	0	0	0	0	0	0	0	0	0
h. Statutory rape	0	0	0	0	0	0	0	0	0
i. Robbery	0	0	0	0	0	0	0	0	0
j. Aggravated assault	0	0	0	0	0	0	0	0	0
k. Burglary	0	0	0	0	0	0	0	0	0
l. Motor vehicle theft	0	0	0	0	0	0	0	0	0
m. Arson	0	0	0	0	0	0	0	0	0
n. Simple assault	0	0	0	0	0	0	0	0	0
o. Larceny – theft	0	0	0	0	0	0	0	0	0
p. Intimidation	0	0	0	0	0	0	0	0	0
q. Destruction/damage/vandalism of property	0	0	0	0	0	0	0	0	0





San José – Evergreen Community College District Police Department

SAN JOSÉ CITY COLLEGE VAWA, ARREST, AND DISCIPLINARY ACTION STATISTICS

<i>VAWA – On Campus</i>	<i>Total Occurrences On Campus</i>		
Criminal Offense	2022	2023	2024
a. Domestic violence	0	0	0
b. Dating violence	0	0	0
c. Stalking	0	0	0

<i>VAWA – Public Property</i>	<i>Total Occurrences Public Property</i>		
Criminal Offense	2022	2023	2024
a. Domestic violence	0	0	0
b. Dating violence	0	0	0
c. Stalking	0	0	0

<i>Arrests – On Campus</i>	<i>Total Arrests On Campus</i>		
Criminal Offense	2022	2023	2024
a. Weapons: Carrying, possessing etc.	0	0	2
b. Drug abuse violations	0	0	2
c. Liquor law violations	0	0	1

<i>Arrests – Public Property</i>	<i>Total Arrests On Public Property</i>		
Criminal Offense	2022	2023	2024
a. Weapons: Carrying, possessing etc.	0	0	0
b. Drug abuse violations	0	0	0
c. Liquor law violations	0	0	0

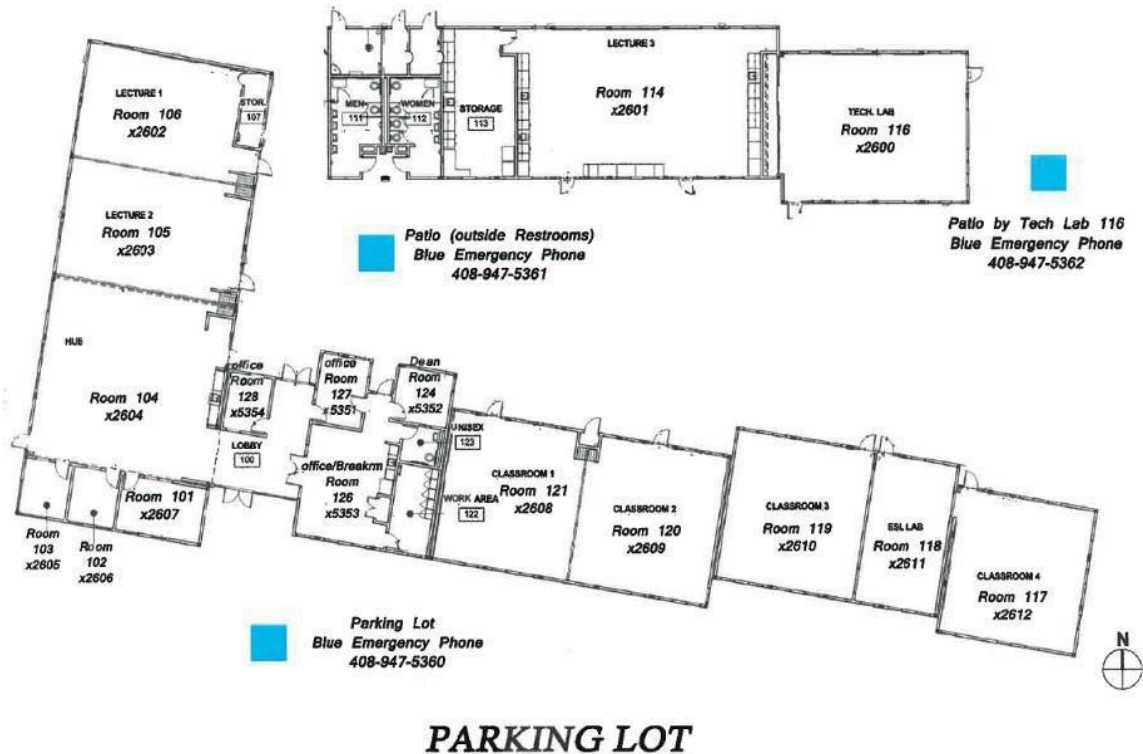
<i>Disciplinary Actions – On Campus</i>	<i>Total Referred for Disiplinary Action</i>		
Criminal Offense	2022	2023	2024
a. Weapons: Carrying, possessing etc.	0	0	0
b. Drug abuse violations	0	0	0
c. Liquor law violations	0	0	0

<i>Disciplinary Actions – Public Property</i>	<i>Total Referred for Disiplinary Action</i>		
Criminal Offense	2022	2023	2024
a. Weapons: Carrying, possessing etc.	0	0	0
b. Drug abuse violations	0	0	0
c. Liquor law violations	0	0	0



San José – Evergreen Community College District Police Department

SJECCD MILPITAS EXTENSION MAP





San José – Evergreen Community College District Police Department

SJECCD MILPITAS EXTENSION CRIMINAL OFFENSE STATISTICS

Criminal Offenses – On Campus

Criminal Offense	Total Occurrences – On Campus		
	2022	2023	2024
a. Murder/Non-negligent manslaughter	0	0	0
b. Negligent manslaughter	0	0	0
c. Sex offenses – Forcible	0	0	0
d. Rape	0	0	0
e. Fondling	0	0	0
f. Sex offenses – Non-forcible	0	0	0
g. Incest	0	0	0
h. Statutory rape	0	0	0
i. Robbery	0	0	0
j. Aggravated assault	0	0	0
k. Burglary	0	0	0
l. Motor vehicle theft	0	0	0
m. Arson	0	0	0





San José – Evergreen Community College District Police Department

SJECCD MILPITAS EXTENSION HATE CRIME STATISTICS

Hate Crimes – On Campus (2024)

Occurrences of Hate Crimes									
Category of Bias for Crimes Reported in 2024									
Criminal Offense	2024 Total	Race	Religion	Sexual Orientation	Gender	Gender Identity	Disability	Ethnicity	National Origin
a. Murder/Non-negligent manslaughter	0	0	0	0	0	0	0	0	0
d. Rape	0	0	0	0	0	0	0	0	0
e. Fondling	0	0	0	0	0	0	0	0	0
g. Incest	0	0	0	0	0	0	0	0	0
h. Statutory rape	0	0	0	0	0	0	0	0	0
i. Robbery	0	0	0	0	0	0	0	0	0
j. Aggravated assault	0	0	0	0	0	0	0	0	0
k. Burglary	0	0	0	0	0	0	0	0	0
l. Motor vehicle theft	0	0	0	0	0	0	0	0	0
m. Arson	0	0	0	0	0	0	0	0	0
n. Simple assault	0	0	0	0	0	0	0	0	0
o. Larceny – theft	0	0	0	0	0	0	0	0	0
p. Intimidation	0	0	0	0	0	0	0	0	0
q. Destruction/damage/vandalism of property	0	0	0	0	0	0	0	0	0

Hate Crimes – On Campus (2023)

Occurrences of Hate crimes									
Category of Bias for Crimes Reported in 2023									
Criminal Offense	2023 Total	Race	Religion	Sexual Orientation	Gender	Gender Identity	Disability	Ethnicity	National Origin
a. Murder/Non-negligent manslaughter	0	0	0	0	0	0	0	0	0
d. Rape	0	0	0	0	0	0	0	0	0
e. Fondling	0	0	0	0	0	0	0	0	0
g. Incest	0	0	0	0	0	0	0	0	0
h. Statutory rape	0	0	0	0	0	0	0	0	0
i. Robbery	0	0	0	0	0	0	0	0	0
j. Aggravated assault	0	0	0	0	0	0	0	0	0
k. Burglary	0	0	0	0	0	0	0	0	0
l. Motor vehicle theft	0	0	0	0	0	0	0	0	0
m. Arson	0	0	0	0	0	0	0	0	0
n. Simple assault	0	0	0	0	0	0	0	0	0
o. Larceny – theft	0	0	0	0	0	0	0	0	0
p. Intimidation	0	0	0	0	0	0	0	0	0
q. Destruction/damage/vandalism of property	0	0	0	0	0	0	0	0	0



SJECCD MILPITAS EXTENSION HATE CRIME STATISTICS (cont.)

Hate Crimes – On Campus (2022)									
Occurrences of Hate Crimes									
Category of Bias for Crimes Reported in 2022									
Criminal Offense	2022 Total	Race	Religion	Sexual Orientation	Gender	Gender Identity	Disability	Ethnicity	National Origin
a. Murder/Non-negligent manslaughter	0	0	0	0	0	0	0	0	0
d. Rape	0	0	0	0	0	0	0	0	0
e. Fondling	0	0	0	0	0	0	0	0	0
g. Incest	0	0	0	0	0	0	0	0	0
h. Statutory rape	0	0	0	0	0	0	0	0	0
i. Robbery	0	0	0	0	0	0	0	0	0
j. Aggravated assault	0	0	0	0	0	0	0	0	0
k. Burglary	0	0	0	0	0	0	0	0	0
l. Motor vehicle theft	0	0	0	0	0	0	0	0	0
m. Arson	0	0	0	0	0	0	0	0	0
n. Simple assault	0	0	0	0	0	0	0	0	0
o. Larceny – theft	0	0	0	0	0	0	0	0	0
p. Intimidation	0	0	0	0	0	0	0	0	0
q. Destruction/damage/vandalism of property	0	0	0	0	0	0	0	0	0

SJECCD MILPITAS EXTENSION VAWA, ARREST, AND DISCIPLINARY ACTION STATISTICS

VAWA – On Campus		Total Occurrences On Campus		
Criminal Offense		2022	2023	2024
a. Domestic violence		0	0	0
b. Dating violence		0	0	0
c. Stalking		0	0	0

Arrests – On Campus		Total Arrests On Campus		
Criminal Offense		2022	2023	2024
a. Weapons: Carrying, possessing etc.		0	0	0
b. Drug abuse violations		0	0	0
c. Liquor law violations		0	0	0

Disciplinary Actions – On Campus		Total Referred for Disciplinary Action		
Criminal Offense		2022	2023	2024
a. Weapons: Carrying, possessing etc.		0	0	0
b. Drug abuse violations		0	0	0
c. Liquor law violations		0	0	0



San José – Evergreen Community College District Police Department

EVERGREEN VALLEY COLLEGE MAP





San José – Evergreen Community College District Police Department

EVERGREEN VALLEY COLLEGE CRIMINAL OFFENSE STATISTICS

Criminal Offenses – On Campus

Criminal Offense	Total Occurrences – On Campus		
	2022	2023	2024
a. Murder/Non-negligent manslaughter	0	0	0
b. Negligent manslaughter	0	0	0
c. Sex offenses – Forcible	0	0	0
d. Rape	1	0	0
e. Fondling	0	0	1
f. Sex offenses – Non-forcible	0	0	0
g. Incest	0	0	0
h. Statutory rape	0	0	0
i. Robbery	0	0	0
j. Aggravated assault	0	0	0
k. Burglary	2	2	1
l. Motor vehicle theft	3	0	3
m. Arson	0	0	0

Criminal Offenses – Public Property

Criminal Offense	Total Occurrences – On Campus		
	2022	2023	2024
a. Murder/Non-negligent manslaughter	0	0	0
b. Negligent manslaughter	0	0	0
c. Sex offenses – Forcible	0	0	0
d. Rape	0	0	0
e. Fondling	0	0	0
f. Sex offenses – Non-forcible	0	0	0
g. Incest	0	0	0
h. Statutory rape	0	0	0
i. Robbery	0	0	0
j. Aggravated assault	0	0	0
k. Burglary	0	0	0
l. Motor vehicle theft	0	0	0
m. Arson	0	0	0



San José – Evergreen Community College District Police Department

EVERGREEN VALLEY COLLEGE HATE CRIME STATISTICS

Hate Crimes – On Campus (2024)

Occurrences of Hate Crimes									
Category of Bias for Crimes Reported in 2024									
Criminal Offense	2024 Total	Race	Religion	Sexual Orientation	Gender	Gender Identity	Disability	Ethnicity	National Origin
a. Murder/Non-negligent manslaughter	0	0	0	0	0	0	0	0	0
d. Rape	0	0	0	0	0	0	0	0	0
e. Fondling	0	0	0	0	0	0	0	0	0
g. Incest	0	0	0	0	0	0	0	0	0
h. Statutory rape	0	0	0	0	0	0	0	0	0
i. Robbery	0	0	0	0	0	0	0	0	0
j. Aggravated assault	0	0	0	0	0	0	0	0	0
k. Burglary	0	0	0	0	0	0	0	0	0
l. Motor vehicle theft	0	0	0	0	0	0	0	0	0
m. Arson	0	0	0	0	0	0	0	0	0
n. Simple assault	0	0	0	0	0	0	0	0	0
o. Larceny – theft	0	0	0	0	0	0	0	0	0
p. Intimidation	0	0	0	0	0	0	0	0	0
q. Destruction/damage/vandalism of property	0	0	0	0	0	0	0	0	0

Hate Crimes – On Campus (2023)

Occurrences of Hate Crimes									
Category of Bias for Crimes Reported in 2023									
Criminal Offense	2023 Total	Race	Religion	Sexual Orientation	Gender	Gender Identity	Disability	Ethnicity	National Origin
a. Murder/Non-negligent manslaughter	0	0	0	0	0	0	0	0	0
d. Rape	0	0	0	0	0	0	0	0	0
e. Fondling	0	0	0	0	0	0	0	0	0
g. Incest	0	0	0	0	0	0	0	0	0
h. Statutory rape	0	0	0	0	0	0	0	0	0
i. Robbery	0	0	0	0	0	0	0	0	0
j. Aggravated assault	0	0	0	0	0	0	0	0	0
k. Burglary	0	0	0	0	0	0	0	0	0
l. Motor vehicle theft	0	0	0	0	0	0	0	0	0
m. Arson	0	0	0	0	0	0	0	0	0
n. Simple assault	0	0	0	0	0	0	0	0	0
o. Larceny – theft	0	0	0	0	0	0	0	0	0
p. Intimidation	0	0	0	0	0	0	0	0	0
q. Destruction/damage/vandalism of property	0	0	0	0	0	0	0	0	0



San José – Evergreen Community College District Police Department

EVERGREEN VALLEY COLLEGE

HATE CRIME STATISTICS (cont.)

Hate Crimes – On Campus (2022)

Occurrences of Hate Crimes									
Category of Bias for Crimes Reported in 2022									
Criminal Offense	2022 Total	Race	Religion	Sexual Orientation	Gender	Gender Identity	Disability	Ethnicity	National Origin
a. Murder/Non-negligent manslaughter	0	0	0	0	0	0	0	0	0
d. Rape	0	0	0	0	0	0	0	0	0
e. Fondling	0	0	0	0	0	0	0	0	0
g. Incest	0	0	0	0	0	0	0	0	0
h. Statutory rape	0	0	0	0	0	0	0	0	0
i. Robbery	0	0	0	0	0	0	0	0	0
j. Aggravated assault	0	0	0	0	0	0	0	0	0
k. Burglary	0	0	0	0	0	0	0	0	0
l. Motor vehicle theft	0	0	0	0	0	0	0	0	0
m. Arson	0	0	0	0	0	0	0	0	0
n. Simple assault	0	0	0	0	0	0	0	0	0
o. Larceny – theft	0	0	0	0	0	0	0	0	0
p. Intimidation	0	0	0	0	0	0	0	0	0
q. Destruction/damage/vandalism of property	0	0	0	0	0	0	0	0	0

Hate Crimes – Public Property (2024)

Occurrences of Hate Crimes									
Category of Bias for Crimes Reported in 2024									
Criminal Offense	2024 Total	Race	Religion	Sexual Orientation	Gender	Gender Identity	Disability	Ethnicity	National Origin
a. Murder/Non-negligent manslaughter	0	0	0	0	0	0	0	0	0
d. Rape	0	0	0	0	0	0	0	0	0
e. Fondling	0	0	0	0	0	0	0	0	0
g. Incest	0	0	0	0	0	0	0	0	0
h. Statutory rape	0	0	0	0	0	0	0	0	0
i. Robbery	0	0	0	0	0	0	0	0	0
j. Aggravated assault	0	0	0	0	0	0	0	0	0
k. Burglary	0	0	0	0	0	0	0	0	0
l. Motor vehicle theft	0	0	0	0	0	0	0	0	0
m. Arson	0	0	0	0	0	0	0	0	0
n. Simple assault	0	0	0	0	0	0	0	0	0
o. Larceny – theft	0	0	0	0	0	0	0	0	0
p. Intimidation	0	0	0	0	0	0	0	0	0
q. Destruction/damage/vandalism of property	0	0	0	0	0	0	0	0	0



San José – Evergreen Community College District Police Department

EVERGREEN VALLEY COLLEGE

HATE CRIME STATISTICS (cont.)

Hate Crimes – Public Property (2023)

Occurrences of Hate Crimes									
Category of Bias for Crimes Reported in 2023									
Criminal Offense	2023 Total	Race	Religion	Sexual Orientation	Gender	Gender Identity	Disability	Ethnicity	National Origin
a. Murder/Non-negligent manslaughter	0	0	0	0	0	0	0	0	0
d. Rape	0	0	0	0	0	0	0	0	0
e. Fondling	0	0	0	0	0	0	0	0	0
g. Incest	0	0	0	0	0	0	0	0	0
h. Statutory rape	0	0	0	0	0	0	0	0	0
i. Robbery	0	0	0	0	0	0	0	0	0
j. Aggravated assault	0	0	0	0	0	0	0	0	0
k. Burglary	0	0	0	0	0	0	0	0	0
l. Motor vehicle theft	0	0	0	0	0	0	0	0	0
m. Arson	0	0	0	0	0	0	0	0	0
n. Simple assault	0	0	0	0	0	0	0	0	0
o. Larceny – theft	0	0	0	0	0	0	0	0	0
p. Intimidation	0	0	0	0	0	0	0	0	0
q. Destruction/damage/vandalism of property	0	0	0	0	0	0	0	0	0

Hate Crimes – Public Property (2022)

Occurrences of Hate Crimes									
Category of Bias for Crimes Reported in 2022									
Criminal Offense	2022 Total	Race	Religion	Sexual Orientation	Gender	Gender Identity	Disability	Ethnicity	National Origin
a. Murder/Non-negligent manslaughter	0	0	0	0	0	0	0	0	0
d. Rape	0	0	0	0	0	0	0	0	0
e. Fondling	0	0	0	0	0	0	0	0	0
g. Incest	0	0	0	0	0	0	0	0	0
h. Statutory rape	0	0	0	0	0	0	0	0	0
i. Robbery	0	0	0	0	0	0	0	0	0
j. Aggravated assault	0	0	0	0	0	0	0	0	0
k. Burglary	0	0	0	0	0	0	0	0	0
l. Motor vehicle theft	0	0	0	0	0	0	0	0	0
m. Arson	0	0	0	0	0	0	0	0	0
n. Simple assault	0	0	0	0	0	0	0	0	0
o. Larceny – theft	0	0	0	0	0	0	0	0	0
p. Intimidation	0	0	0	0	0	0	0	0	0
q. Destruction/damage/vandalism of property	0	0	0	0	0	0	0	0	0



San José – Evergreen Community College District Police Department

EVERGREEN VALLEY COLLEGE VAWA, ARREST, AND DISCIPLINARY ACTION STATISTICS

<i>VAWA – On Campus</i>	<i>Total Occurrences On Campus</i>		
Criminal Offense	2022	2023	2024
a. Domestic violence	1	0	0
b. Dating violence	0	0	0
c. Stalking	0	0	0

<i>VAWA – Public Property</i>	<i>Total Occurrences Public Property</i>		
Criminal Offense	2022	2023	2024
a. Domestic violence	1	0	0
b. Dating violence	0	0	0
c. Stalking	0	0	0

<i>Arrests – On Campus</i>	<i>Total Arrests On Campus</i>		
Criminal Offense	2022	2023	2024
a. Weapons: Carrying, possessing etc.	0	0	0
b. Drug abuse violations	0	0	2
c. Liquor law violations	0	0	0

<i>Arrests – Public Property</i>	<i>Total Arrests On Public Property</i>		
Criminal Offense	2022	2023	2024
a. Weapons: Carrying, possessing etc.	0	0	0
b. Drug abuse violations	0	0	1
c. Liquor law violations	0	0	0

<i>Disciplinary Actions – On Campus</i>	<i>Total Referred for Disiplinary Action</i>		
Criminal Offense	2022	2023	2024
a. Weapons: Carrying, possessing etc.	0	0	0
b. Drug abuse violations	0	0	0
c. Liquor law violations	0	0	0

<i>Disciplinary Actions – Public Property</i>	<i>Total Referred for Disiplinary Action</i>		
Criminal Offense	2022	2023	2024
a. Weapons: Carrying, possessing etc.	0	0	0
b. Drug abuse violations	0	0	0
c. Liquor law violations	0	0	0



CRIME DEFINITIONS

The following crime definitions are used in accordance with the Federal Bureau of Investigation's Uniform Crime Reporting Program.

Robbery

The taking or attempting to take anything of value from the care, custody, or control of a person or persons by force or threat of force or violence and/or by putting the victim in fear.

Aggravated Assault

An unlawful attack by one person upon another for the purpose of inflicting severe or aggravated bodily injury. This type of assault usually is accompanied by the use of a weapon or by means likely to produce death or great bodily harm. (It is not necessary that injury result from an aggravated assault when a gun, knife, or other weapon is used which could and probably would result in serious personal injury if the crime were successfully completed.)

Burglary

The unlawful entry of a structure to commit a felony or a theft. For reporting purposes this definition includes: unlawful entry with intent to commit a larceny or felony; breaking and entering with intent to commit a larceny; housebreaking; safecracking; and all attempts to commit any of the aforementioned.

Motor Vehicle Theft

The theft or attempted theft of a motor vehicle. (Classify as motor vehicle theft all cases where automobiles are taken by persons not having lawful access even though the vehicles are later abandoned—including joyriding.)

Weapon Law Violations

The violation of laws or ordinances dealing with weapon offenses, regulatory in nature, such as manufacture, sale, or possession of deadly weapons; carrying deadly weapons, concealed or openly; furnishing deadly weapons to minors; aliens possessing deadly weapons; and all attempts to commit any of the aforementioned.

Drug Abuse Violations

Violations of State and local laws relating to the unlawful possession, sale, use, growing, manufacturing, and making of narcotic drugs. The relevant substances include: opium or cocaine and their derivatives (morphine, heroin, codeine); marijuana; synthetic narcotics (demerol, methadone); and dangerous non-narcotic drugs (barbiturates, benzedrine).



Liquor Law Violations

The violation of laws or ordinances prohibiting: the manufacture, sale, transporting, furnishing, possessing of intoxicating liquor; maintaining unlawful drinking places; bootlegging; operating a still; furnishing liquor to a minor or intemperate person; using a vehicle for illegal transportation of liquor; drinking on a train or public conveyance; and all attempts to commit any of the aforementioned. (Drunkenness and driving under the influence are not included in this definition.)

Arson

Any willful or malicious burning or attempt to burn, with or without intent to defraud, a dwelling house, public building, motor vehicle or aircraft, personal property of another, etc.

Criminal Homicide – Manslaughter by Negligence

The killing of another person through gross negligence.

Criminal Homicide – Murder and Non-Negligent Manslaughter

The willful (non-negligent) killing of one human being by another.

The following sex offense definitions are excerpted from the National Incident-Based Reporting System Edition of the uniform Crime Reporting Program.

Sex Offenses – Forcible

Any sexual act directed against another person, forcibly and/or against that person's will; or not forcibly or against the person's will where the victim is incapable of giving consent.

Forcible Rape

The carnal knowledge of a person, forcibly and/or against that person's will; or not forcibly or against the person's will where the victim is incapable of giving consent because of his/her temporary or permanent mental or physical incapacity (or because of his/her youth).

Forcible Sodomy

Oral or anal sexual intercourse with another person, forcibly and/or against that person's will; or not forcibly against the person's will where the victim is incapable of giving consent because of his/her youth or because of his/her temporary or permanent mental or physical incapacity.

Sexual Assault with an Object

The use of an object or instrument to unlawfully penetrate, however slightly, the genital or anal opening of the body of another person, forcibly and/or against that person's will; or not forcibly or against the person's will where the victim is incapable of giving consent because of his/her youth or because of his/her temporary or permanent mental or physical incapacity.



Forcible Fondling

The touching of the private body parts of another person for the purpose of sexual gratification, forcibly and/or against that person's will; or, not forcibly or against the person's will where the victim is incapable of giving consent because of his/her youth or because of his/her temporary or permanent mental incapacity.

Sex Offenses – Non-Forcible

Unlawful, non-forcible sexual intercourse.

Incest

Non-forcible sexual intercourse between persons who are related to each other within the degrees wherein marriage is prohibited by law.

Statutory Rape

Non-forcible sexual intercourse with a person who is under the statutory age of consent.

The following sex offense definitions are excerpted from The Campus Sexual Violence Elimination Act (SaVE Act) as part of the Violence Against Women Reauthorization Act (VAWA).

In determining what offenses to report under the Clery Act, institutions should use the following definitions:

Domestic Violence

Felony or misdemeanor crimes of violence committed by a current or former spouse of the victim, by a person with whom the victim shares a child in common, by a person who is cohabitating with or has cohabitated with the victim as a spouse, by a person similarly situated to a spouse of the victim under the domestic or family violence laws of the jurisdiction...or by any other person against an adult or youth victim who is protected from that person's acts under the domestic or family violence laws of the jurisdiction.

Dating Violence

Violence committed by a person –

- a) Who is or has been in a social relationship of a romantic or intimate nature with the victim; and
- b) Where the existence of such a relationship shall be determined based on a consideration of the following factors:
 - The length of the relationship
 - The type of relationship
 - The frequency of interaction between the persons involved in the relationship



Stalking

Engaging in a course of conduct directed at a specific person that would cause a reasonable person to –

- a) Fear for his or her safety or the safety of others; or
- b) Suffer substantial emotional distress

Sexual Assault

The Campus SaVE Act defines sexual assault, which – unlike domestic violence, dating violence or stalking – was previously included as a Clery-reportable crime, as “an offense classified as a forcible or non-forcible sex offense under the uniform crime reporting system of the Federal Bureau of Investigation.”



POLICE SERVICES
(408) 270-6468