

# SJECCD Facilities Master Plan (FMP) Existing Conditions

EVC Classified Professionals  
October 22, 2024

# Agenda

- Facilities Master Plan Update: Overview
- First Impressions
- People, Programs, and Spaces
- Summary of Observations
- Q&A



# Facilities Master Plan Overview

# Purpose

## Evaluate

- Programs, people and spaces
- The existing physical condition of campus facilities

## Create a list of projects

- Identify existing spaces to upgrade/renovate, repurpose, or demolish
- Identify and locate new buildings to construct

## Prioritize projects

- Determine how much can be accomplished with existing funds
- Identify how much more funding is needed

# Work Completed (to date)

**Leadership:** Kick-off meetings and interviews in the spring

**FMP TaskForce:** (17 members) 2 meetings so far in June and September, (the next in November)

**Employees and Students:** Survey in May with over 600+ responses

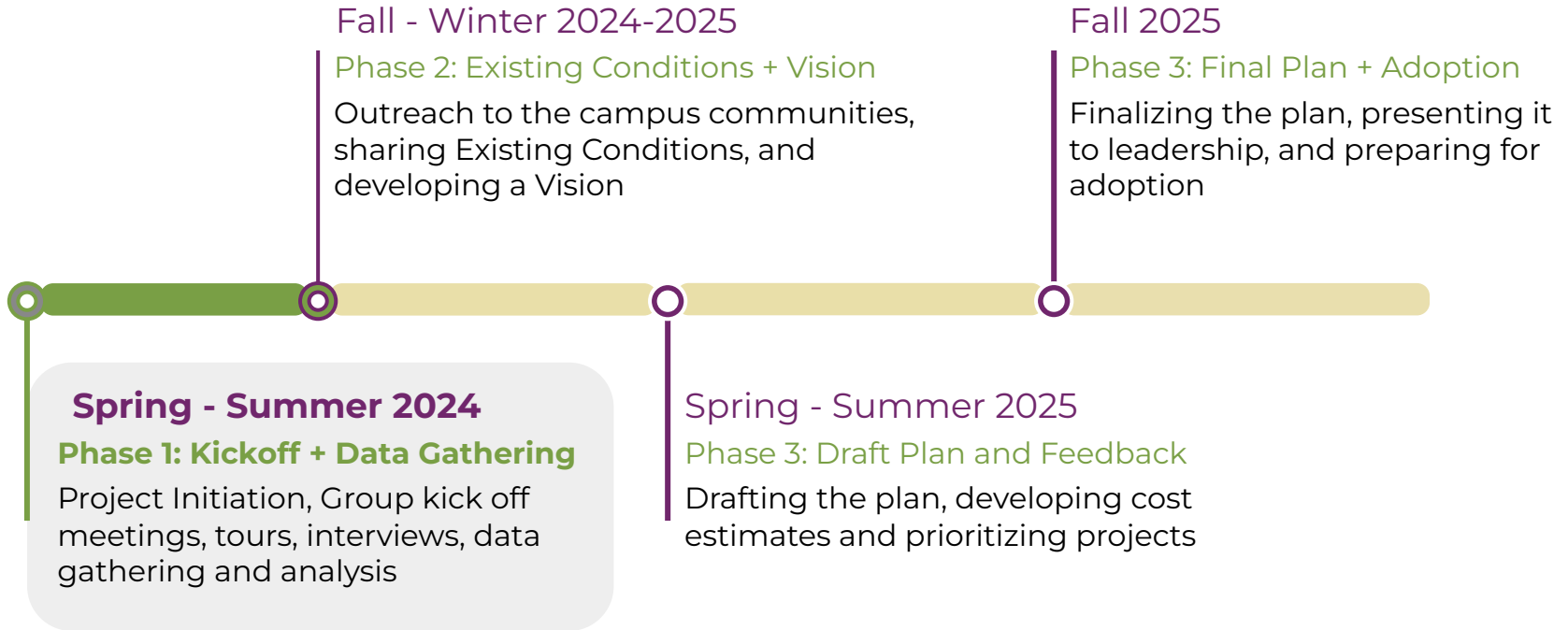
**Data Gathering:** Review of Enrollment, Programs/Courses, and Class Scheduling

**Campus Site Tours:** Public Realm, Buildings, and Mechanical Electrical Plumbing (MEP) over the summer

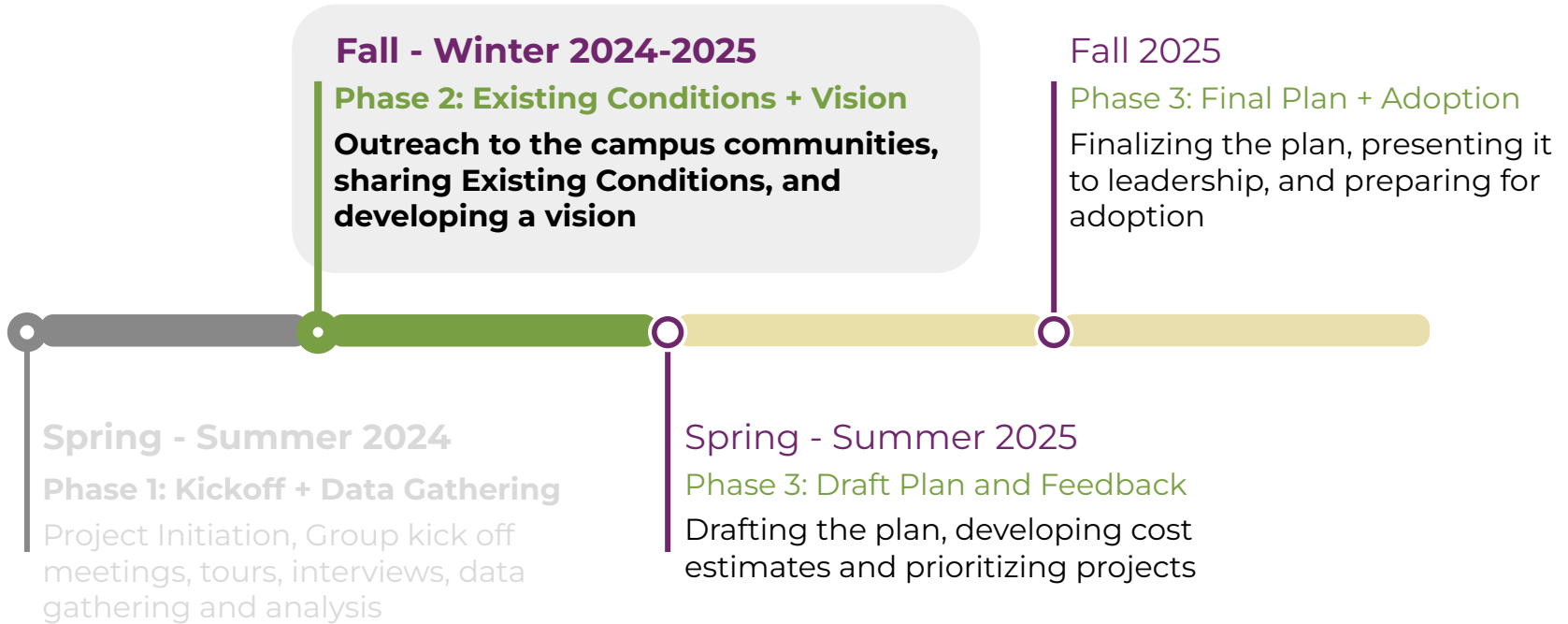
- Evergreen Valley College
- San José City College
- Milpitas Extension



# Phase 1: Evaluate



# Phase 2: Existing Conditions/ Potential Projects



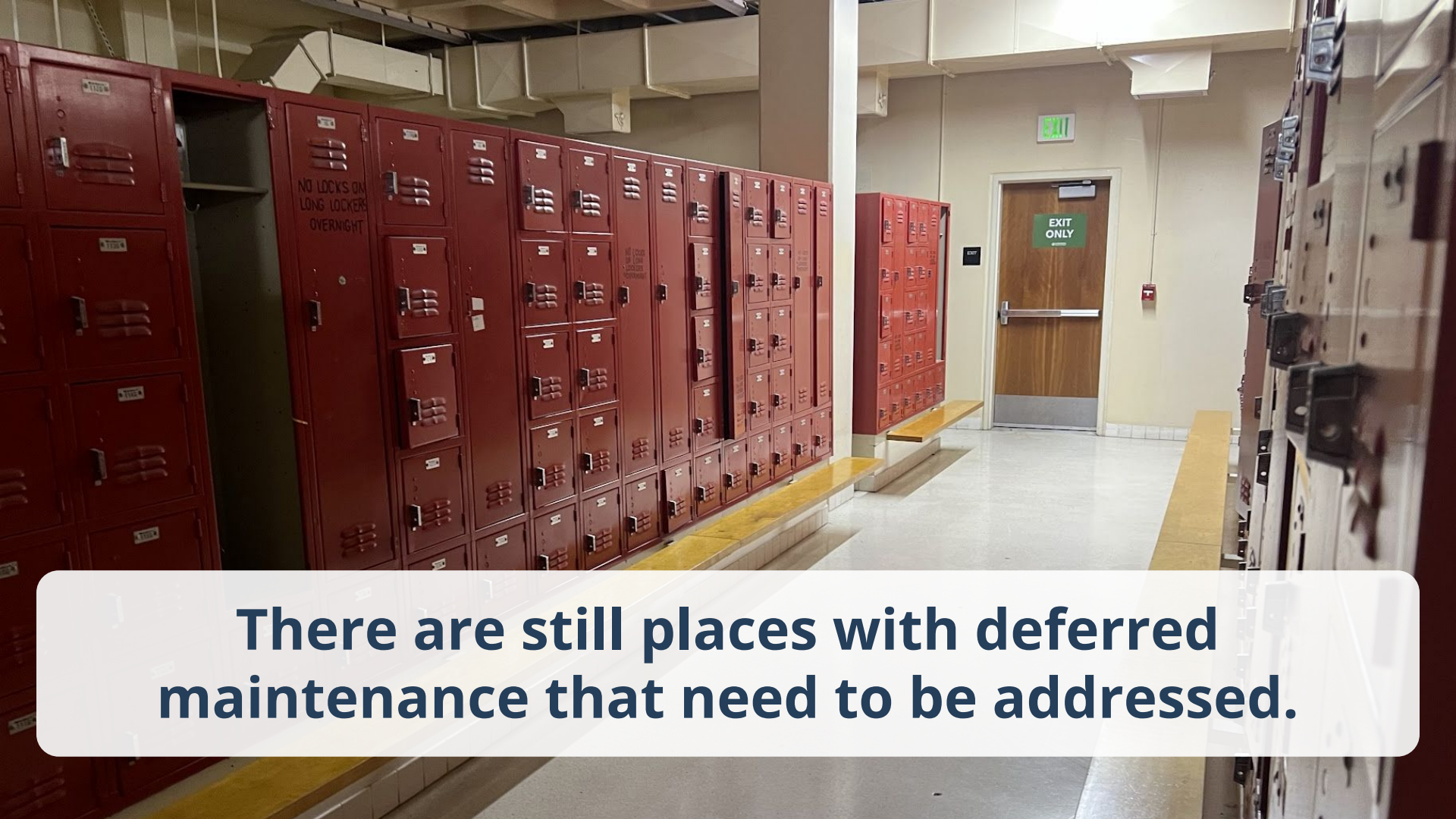
# First Impressions







**There is plenty of space.  
“It’s not a brick and mortar problem”**



**There are still places with deferred maintenance that need to be addressed.**



**There are facilities that need more than renovation.**

**There is need for specialized equipment for certain classes.**



**Basic needs need to be integrated in more places.**



**More storage space is needed.**





**Outdated technology and inflexible configurations make rooms hard to use.**

**A lot of large gathering spaces already exist. Better utilize existing large spaces before building new ones.**



Montgomery Hall



Gymnasium



Visual Performing Arts



Language Arts



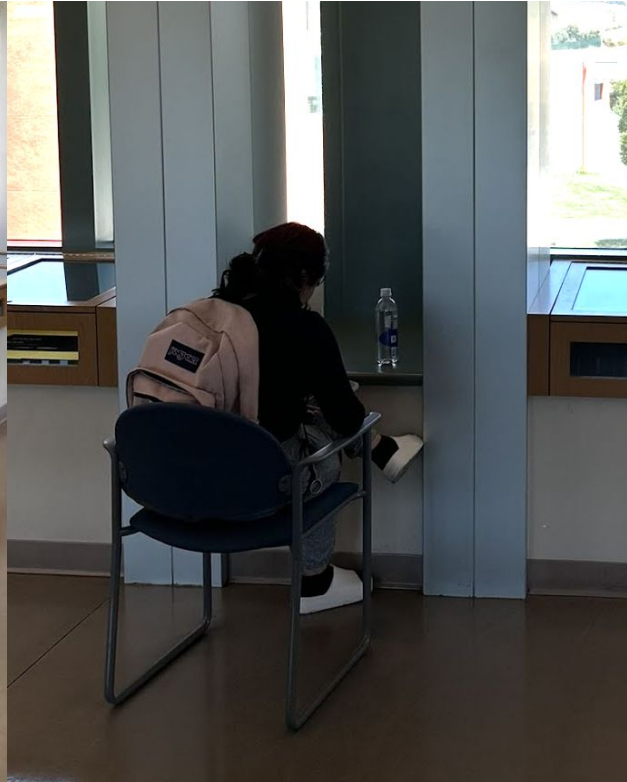
**Parking spaces are more than sufficient at both campuses. There is no need for new parking structures.**



**Lots of academic space, not enough student life/ club spaces.**



**There should be more touchdown spaces and places to go (indoors and outdoors) between classes at both campuses.**



**There could be more culturally appropriate spaces and comfortable areas for socializing and studying.**



**Formats for food & retail are outdated and are in need of a strategy.**

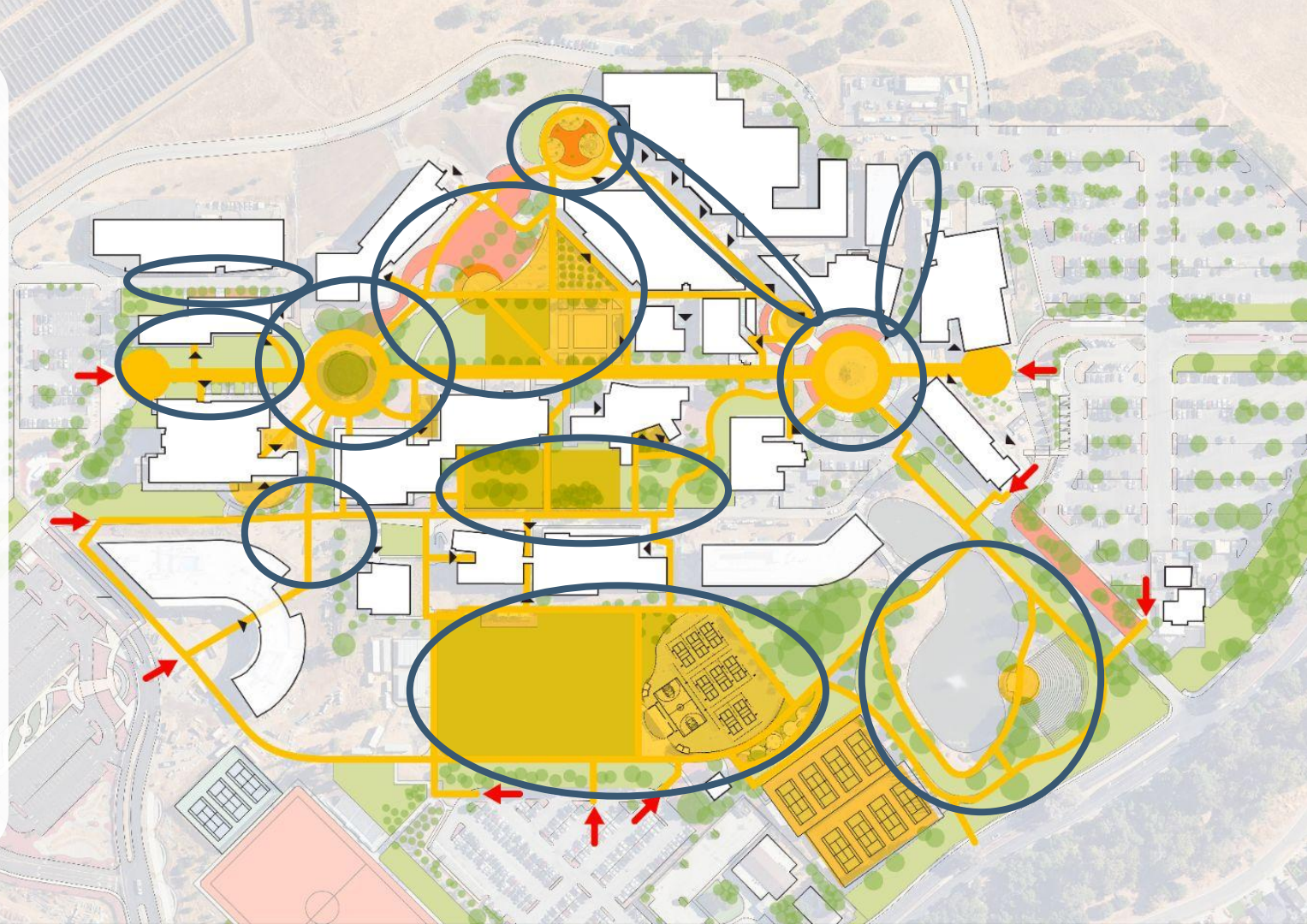


The image shows a complex industrial environment, likely a factory or power plant. In the foreground, there are large, vertical, cylindrical components, possibly parts of a turbine or generator, with a mix of white and green paint. A prominent green pipe runs vertically through the center. To the right, a large white cylindrical structure is visible, also with green accents. The background is filled with various pipes, metal structures, and electrical equipment. A yellow motor is visible on the right side. The overall scene is brightly lit, suggesting an indoor industrial space. A semi-transparent white box with rounded corners is overlaid in the center, containing text.

**Now would be the ideal time to make the campus all-electric and to improve energy efficiency.**

**There is a lot of outdoor space.**

**Energy across campuses is spread thin and not focused.**



**Outdoor gathering spaces can be improved to make people feel more protected, comfortable, and delighted.**





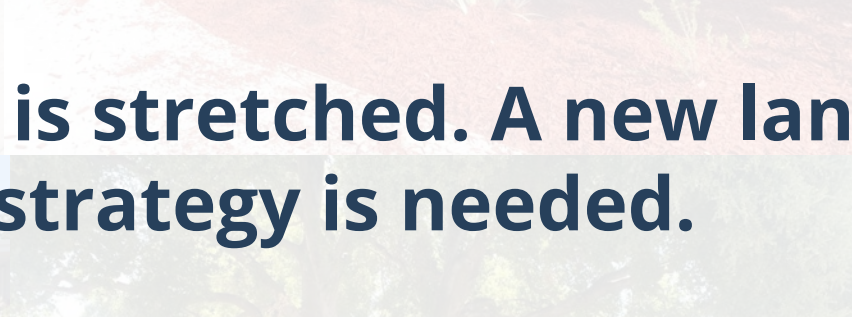


STUDENT SERVICES

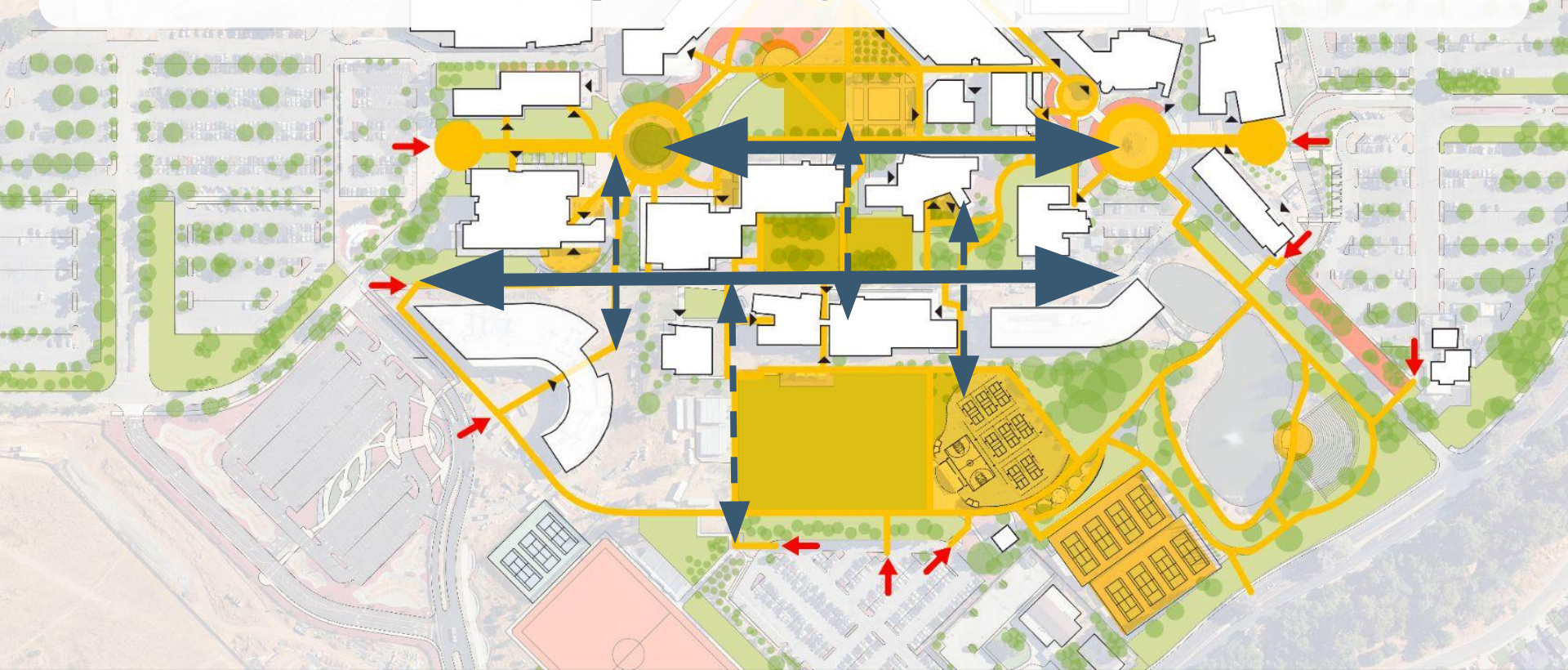
**The largest gathering spaces could be better activated.**



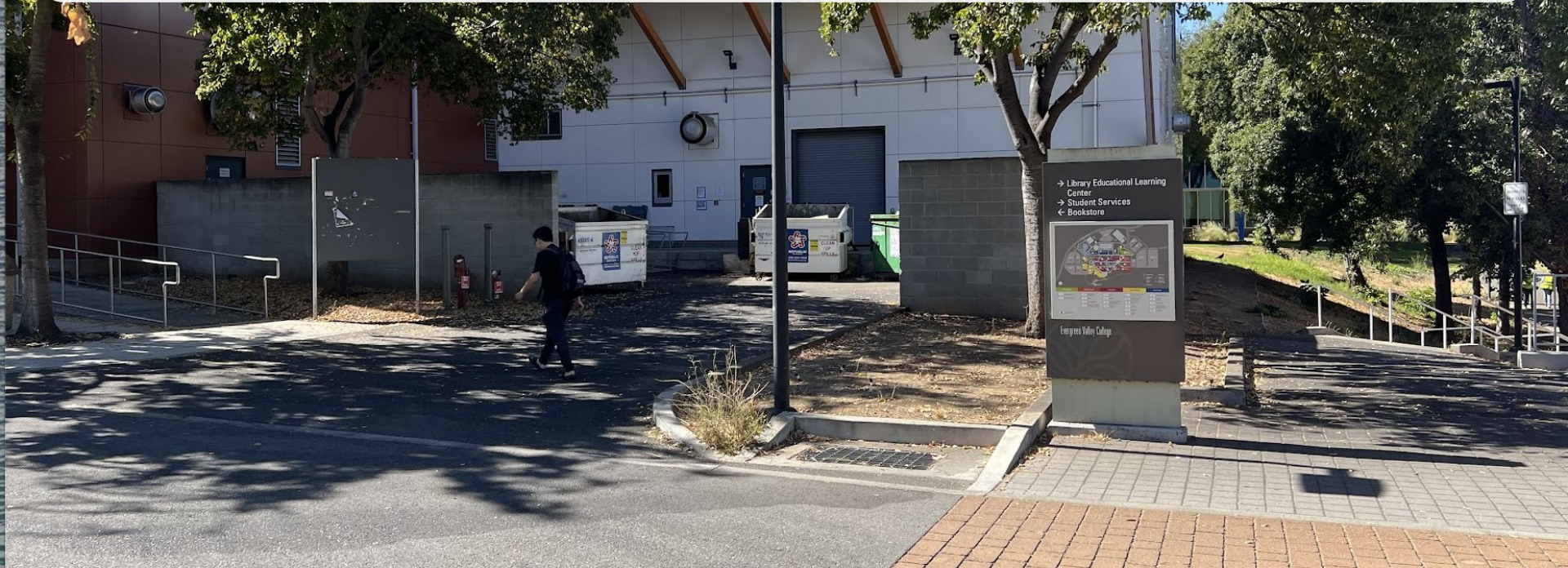
**Maintenance is stretched. A new landscaping strategy is needed.**



**East-west pathways are strongly designed.  
North-south pathways need attention.**



**Which is the front? Which is the back? Where does the back of house best go?**



**North-south connections need to be designed to better facilitate flow.**



**Stairs and elevators are not inclusive and/or inconvenient. Improving ADA access is important.**



**New buildings were the focus of the last FMP, infrastructure improvements, accessibility and maintenance are needed in this one.**



# Did we see things the way you see things?

*What is important about campus facilities, to you?*



A photograph of a classroom or computer lab. Students are seated at long tables, many with laptops open. At the front of the room, a woman is standing near a presentation screen. The screen displays a slide titled "Collecting Gases-contd." with a list of items. The room has a white ceiling with recessed lighting and a projector. A door with a green exit sign is visible on the right.

# People, Programs, and Space

## Collecting Gases-contd.

- If you collect a gas sample with a total pressure of 748.2 mmHg, at 25 °C, the partial pressure of the water vapor will be 23.76 mmHg—so the partial pressure of the dry gas will be 724.4 mmHg.
- Table 5.2

PIEDMONT MIDDLE SCHOOL

8th grade

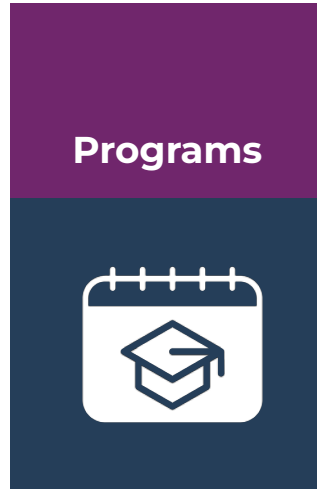
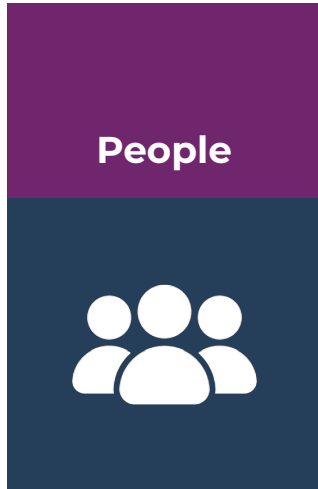
9th grade

# What is Space Planning?

Whom do we serve?

What do we do?

Where do we do it?

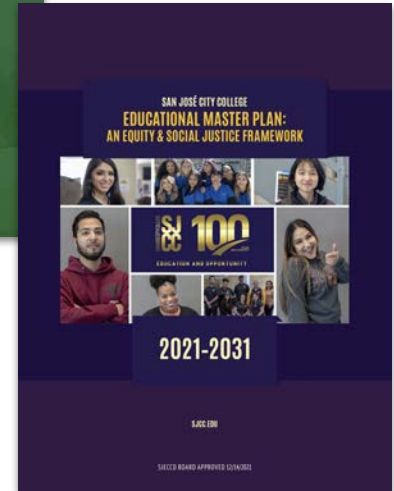


- What kind of space?
- How much?
- Where?
- Changes over time

# The FMP will consider critical factors that affect space planning, consistent with missions and educational master plans

These plans define the future aspirations of the colleges in the District regarding academic programs, students, and community programs.

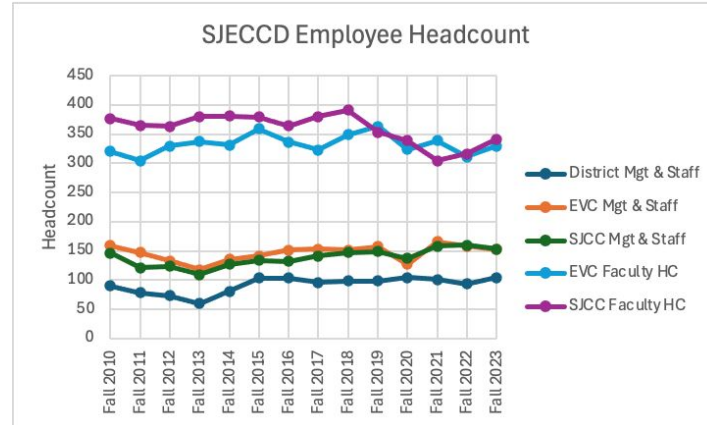
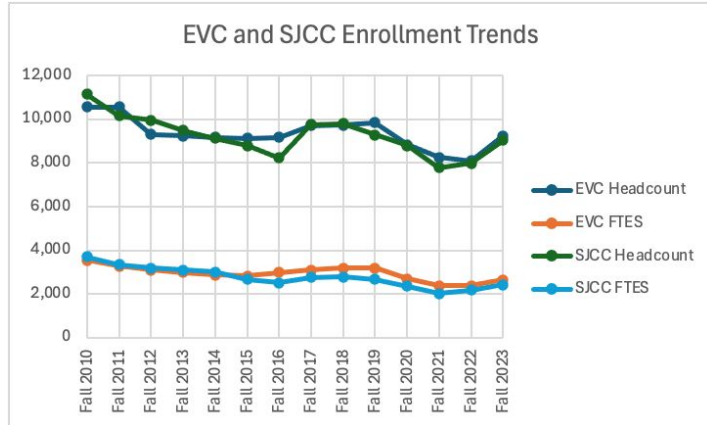
- Students
  - Future student markets given demographic changes
- Academic and Student Life & Support Programs
- Modes of Instruction
- Scheduling Patterns





# Students

# Drop in students since 2020 (recent uptick); little change in employee count



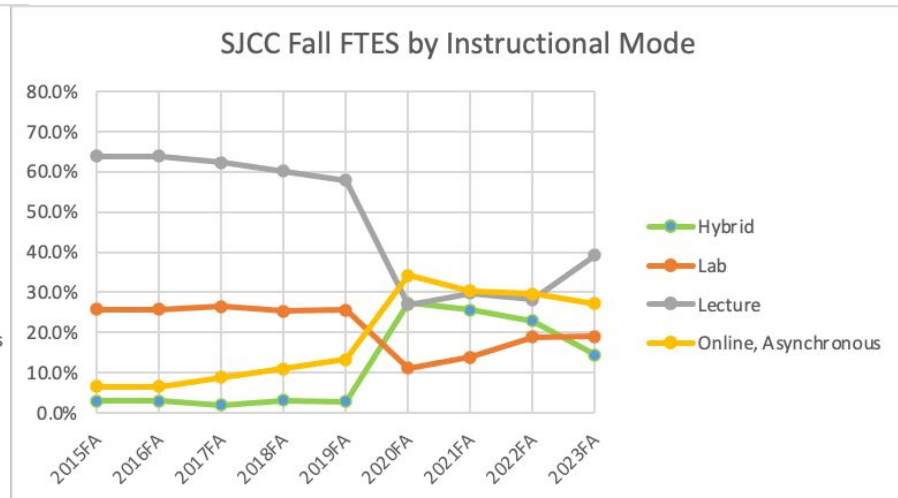
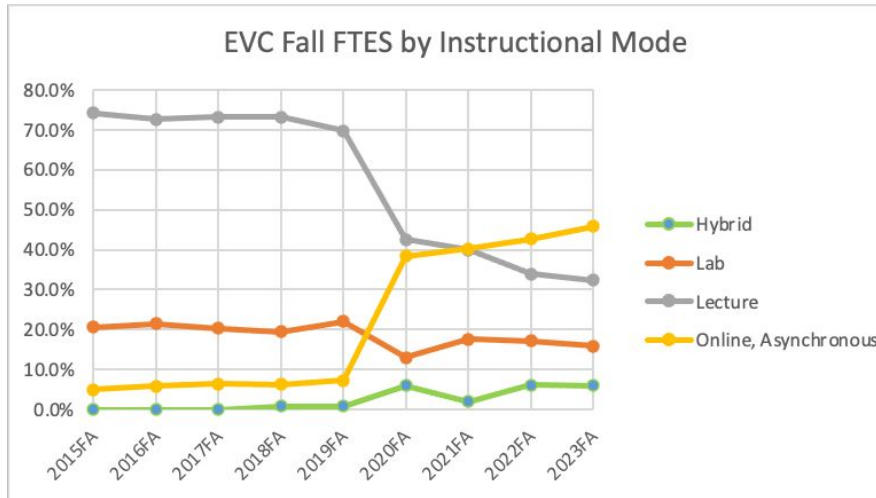
	Fall 2010	Fall 2019	Fall 2023	Change from 2010
All Employees HC	1,092	1,120	1,080	-1.1%
All Students HC	21,707	19,144	18,271	-15.8%
Total FTES	7,247.8	5,859.1	5,064.0	-30.1%



**Academic Programs and Instruction**

# Online learning: Pandemic = Major impact on instruction

- Online instruction continues to replace many lecture courses.
- EVC has more online instruction and its increasing.
- Hybrid instruction grew to about 25% at SJCC, then declined.
- Lab instruction fell with some recovery.

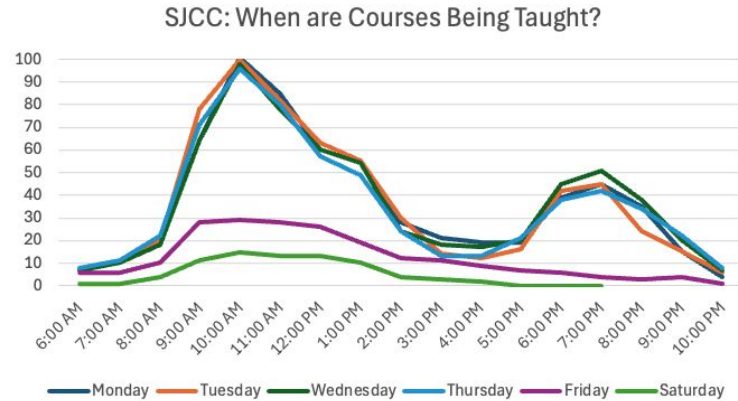
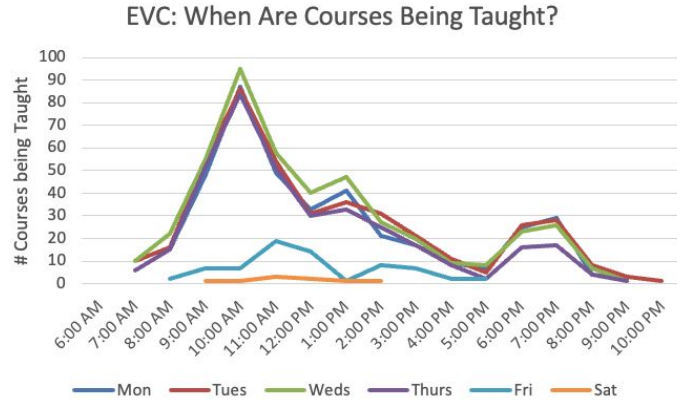


A wide-angle photograph of a modern lecture hall. Students are seated at long, light-colored wooden desks arranged in a semi-circle. They are mostly looking towards the front of the room. At the front, a large projector screen displays a close-up image of a hand holding a pen. A lecturer is visible at a desk behind the screen. The room has a high ceiling with recessed lighting and two projectors hanging from the ceiling. The overall atmosphere is that of a typical university classroom.

# Scheduling and Instructional Space Utilization



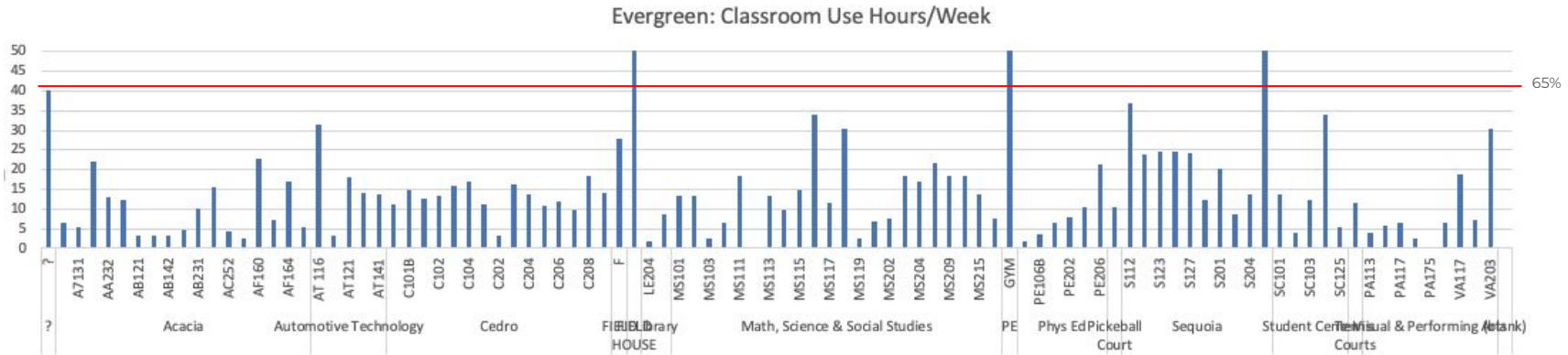
# Schedules leave lots of time for more courses



- At City College and Evergreen, instruction peaks at 10am, then peters off, with another, smaller surge in the evening
- Few courses offered Friday, a handful Saturday
- There is a lot of space in the schedule for additional programming

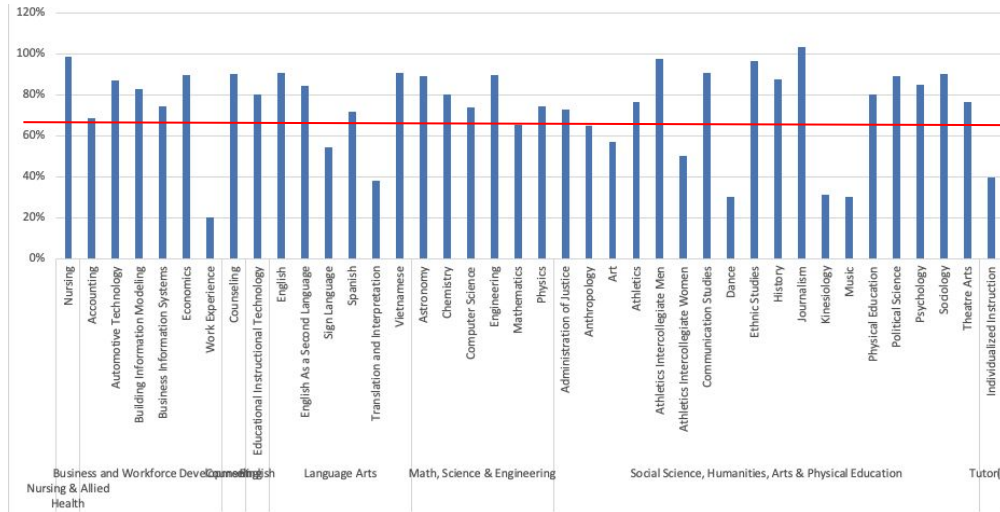
# Few instructional rooms used 26 hours per week

(40 hour weeks: 65%=26 hours/week, does not show vacant/unscheduled classrooms)



# Many courses are well attended (above 65% Fill Rates)

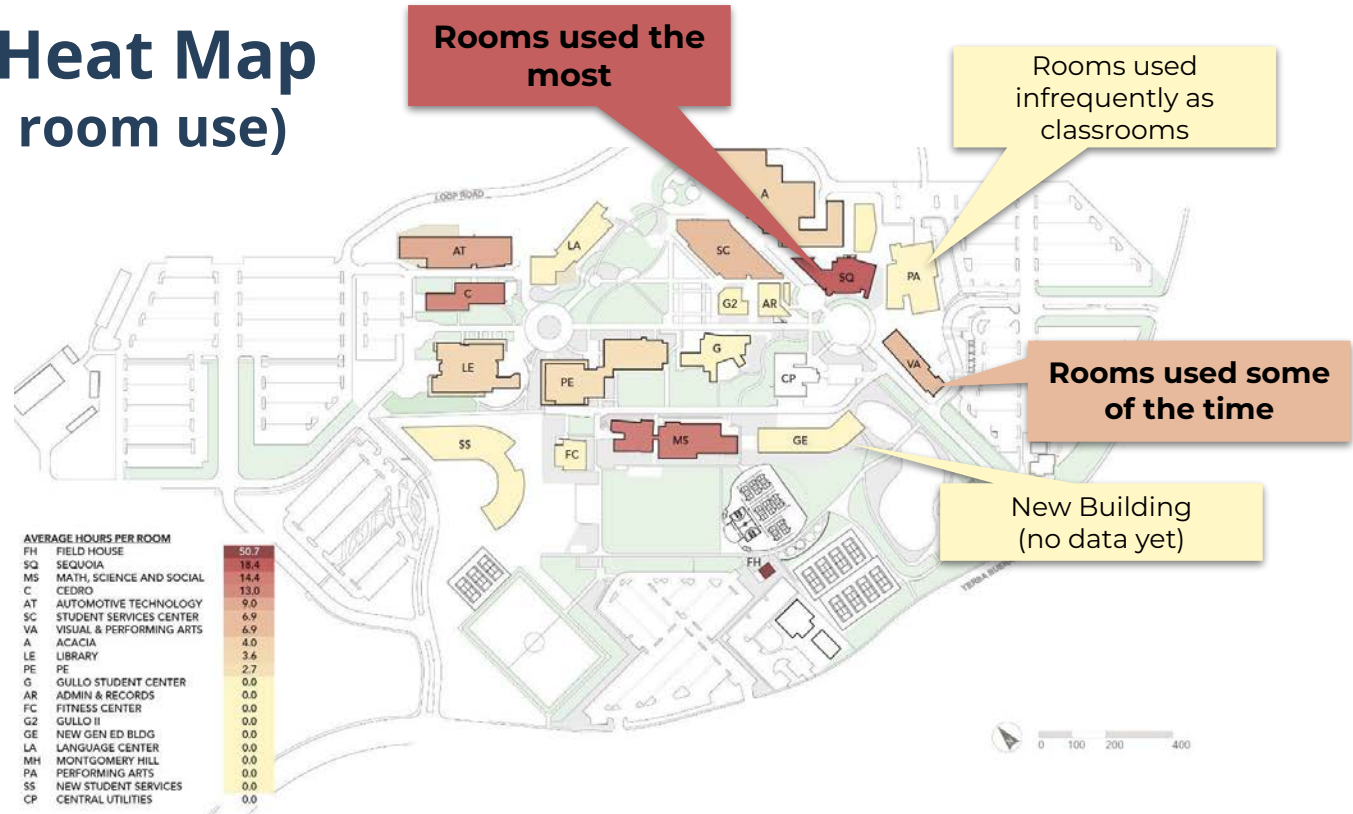
## Evergreen



- High seat fill rates tell us there is demand for on-campus courses at both colleges
- 65% fill rates are a common goal. Red lines show the 65% line
- Some courses fill over 100%
- Foundational courses commonly have waiting lists

# Evergreen Heat Map (instructional room use)

The average number of hours instructional rooms are used ranges from 18.4 - 2.7 hours per week



# Look at options and scenarios for facility use

- Explore **space management scenarios**
  - There is a lot of space! How can spaces be used more effectively?
- What does it take to have a **vibrant campus**?
  - Consider **bringing more students back** on campus
  - Create **centers of activity**.
  - Allocate more space for **student life and student support** programs.
  - Hold more **events for online students**.
  - Host events for the **campus or local community**.
- Look into **revenue generation**
  - Make space available for outside use.



# The FMP is an opportunity to get creative about campus spaces

New buildings were the focus of the last FMP.

**Infrastructure improvements,**

**repurposing existing spaces, and**

**renovations** will be a focus in this FMP.

## Making infrastructure improvements to operate more effectively

- Address maintenance needs
- Increase efficiency of buildings operations
- Consolidate the use of spaces

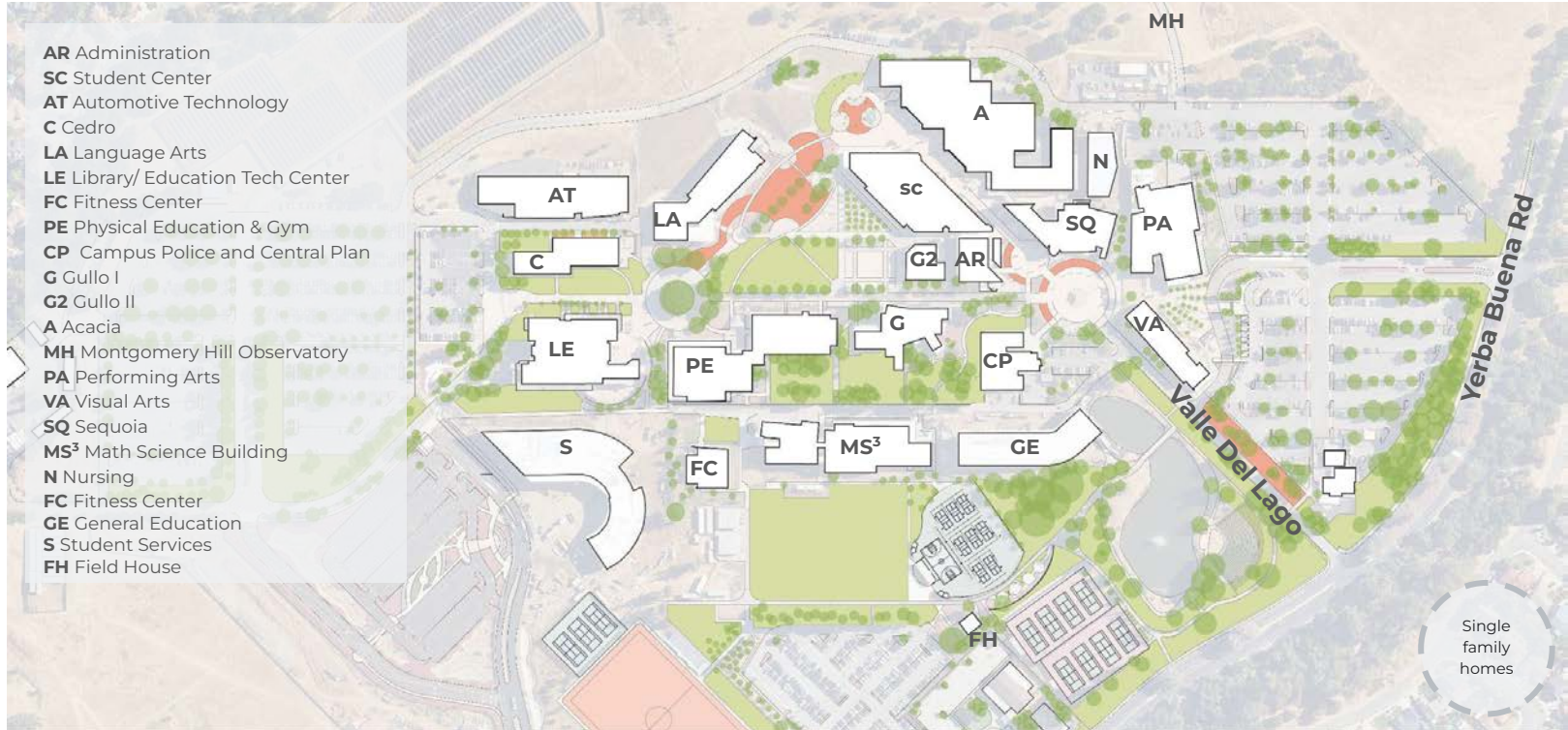
## Repurposing existing spaces to improve campus life

- Support needs for gathering, studying, and club spaces

## Renovating spaces to improve the way we learn

- Upgrading **specialized labs/spaces** with unique or state-of-art technology.
- Supporting **online and hybrid learning** through broadcast rooms or similar facilities.

# We will address facility needs over the next 10 years. What is important to students and the total work environment?



A photograph of a modern university campus under a clear blue sky. The scene features a paved walkway leading through landscaped areas with tall grasses and trees. On the left is a building with a dark, angular facade and large glass windows. On the right is a long, multi-story building with a light-colored, horizontally-slatted facade and yellow horizontal accents. A signpost on the right lists campus locations: Math, Science & Social Studies; Sports Fields; Tennis Courts; and Parking Lot 6. The text 'Thank you!' is centered in the image in a large, white, sans-serif font.

**Thank you!**

↑ Math, Science &  
Social Studies  
Sports Fields  
Tennis Courts  
Parking Lot 6