

SJECCD Facilities Master Plan (FMP) Existing Conditions

EVC Lunch and Learn
October 17, 2024

Agenda

- Facilities Master Plan Update: Overview
- First Impressions
- People, Programs, and Spaces
- Summary of Observations
- Q&A



Facilities Master Plan Overview

Purpose

Evaluate

- Programs, people and spaces
- The existing physical condition of campus facilities

Create a list of projects

- Identify existing spaces to upgrade/renovate, repurpose, or demolish
- Identify and locate new buildings to construct

Prioritize projects

- Determine how much can be accomplished with existing funds
- Identify how much more funding is needed

Work Completed (to date)

Leadership: Kick-off meetings and interviews in the spring

FMP TaskForce: (17 members) 2 meetings so far in June and September, (the next in November)

Employees and Students: Survey in May with over 600+ responses

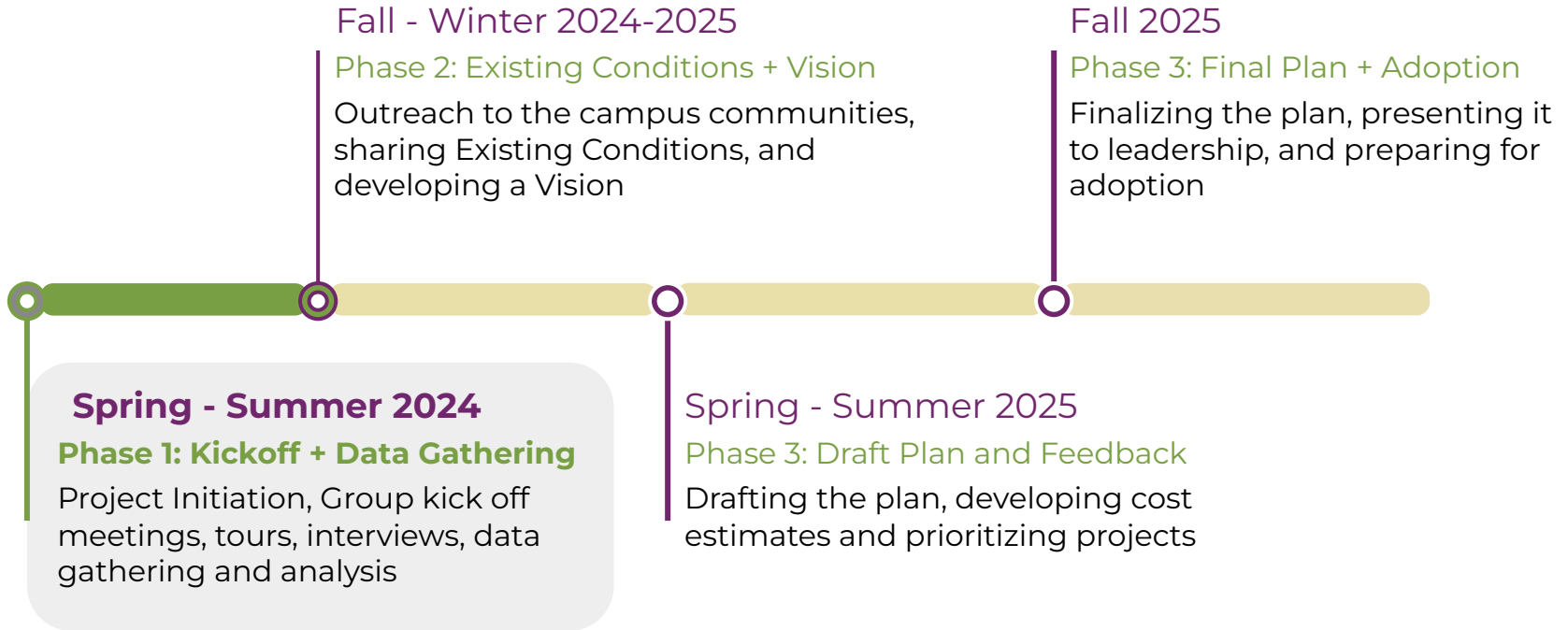
Data Gathering: Review of Enrollment, Programs/Courses, and Class Scheduling

Campus Site Tours: Public Realm, Buildings, and Mechanical Electrical Plumbing (MEP) over the summer

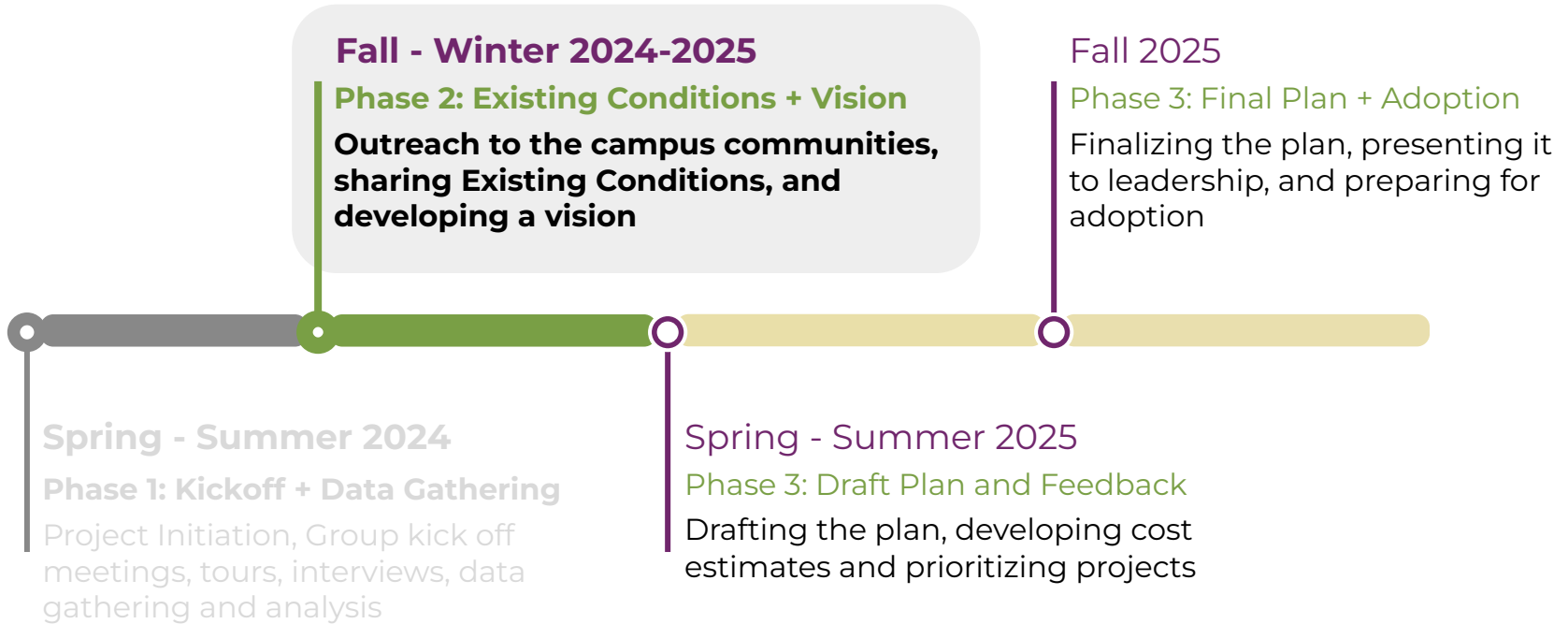
- Evergreen Valley College
- San José City College
- Milpitas Extension



Phase 1: Evaluate



Phase 2: Existing Conditions/ Potential Projects

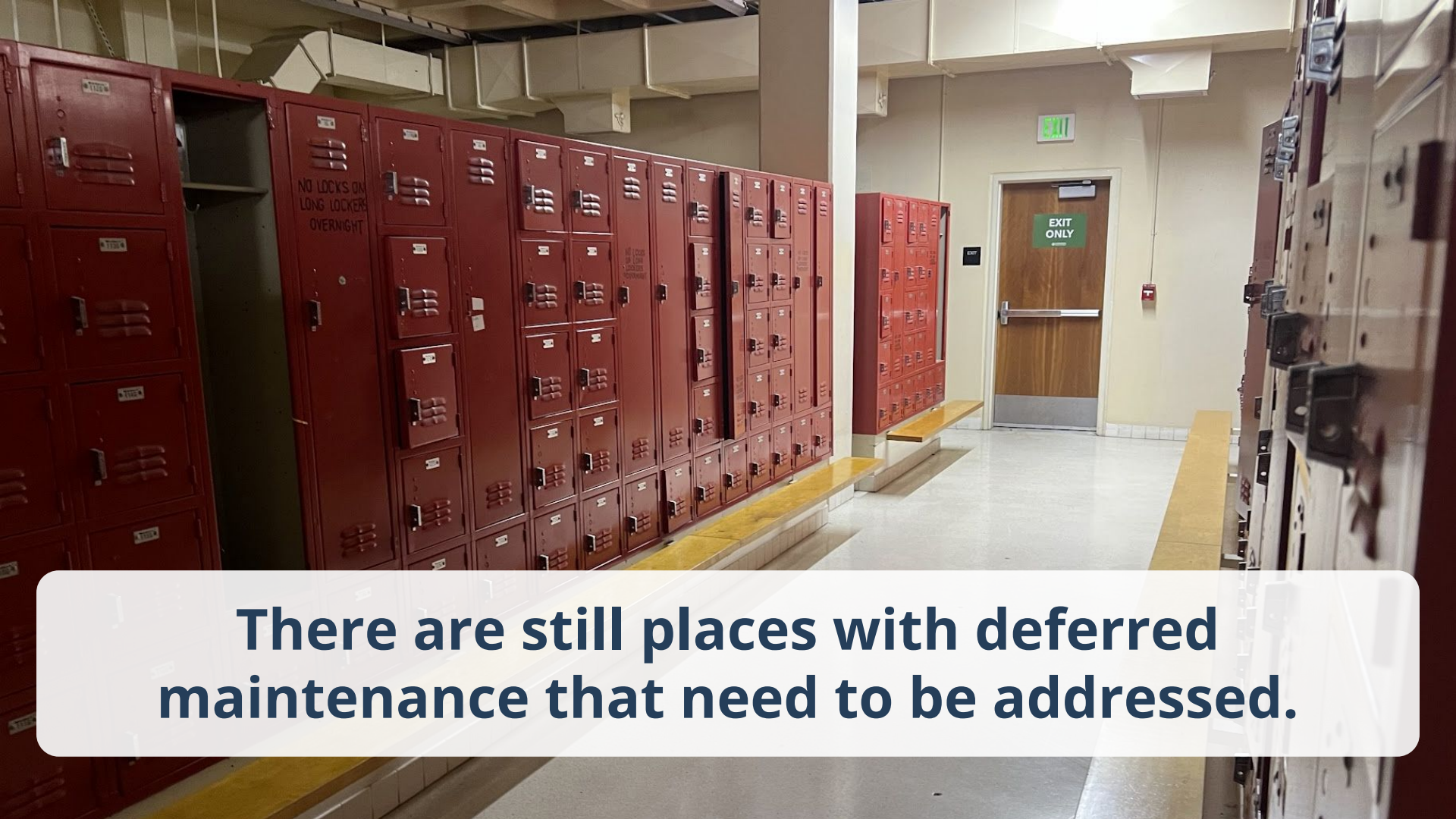


First Impressions





**There is plenty of space.
“It’s not a brick and mortar problem”**



There are still places with deferred maintenance that need to be addressed.



There are facilities that need more than renovation.

There is need for specialized equipment for certain classes.



Basic needs need to be integrated in more places.



More storage space is needed.





Outdated technology and inflexible configurations make rooms hard to use.

**A lot of large gathering spaces already exist at EVC.
Better utilize existing large spaces before building new ones.**



Montgomery Hall



Gymnasium



Visual Performing Arts



Language Arts

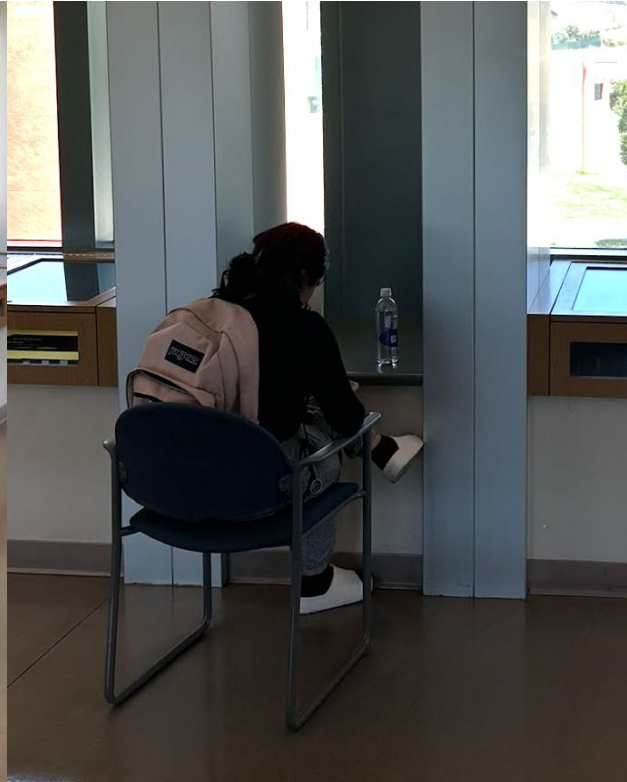
Parking spaces are more than sufficient at both campuses. There is no need for new parking structures.



Lots of academic space, not enough student life/ club spaces.



There should be more touchdown spaces and places to go (indoors and outdoors) between classes at both campuses.



There could be more culturally appropriate spaces and comfortable areas for socializing and studying.



Formats for food & retail are outdated and are in need of a strategy.

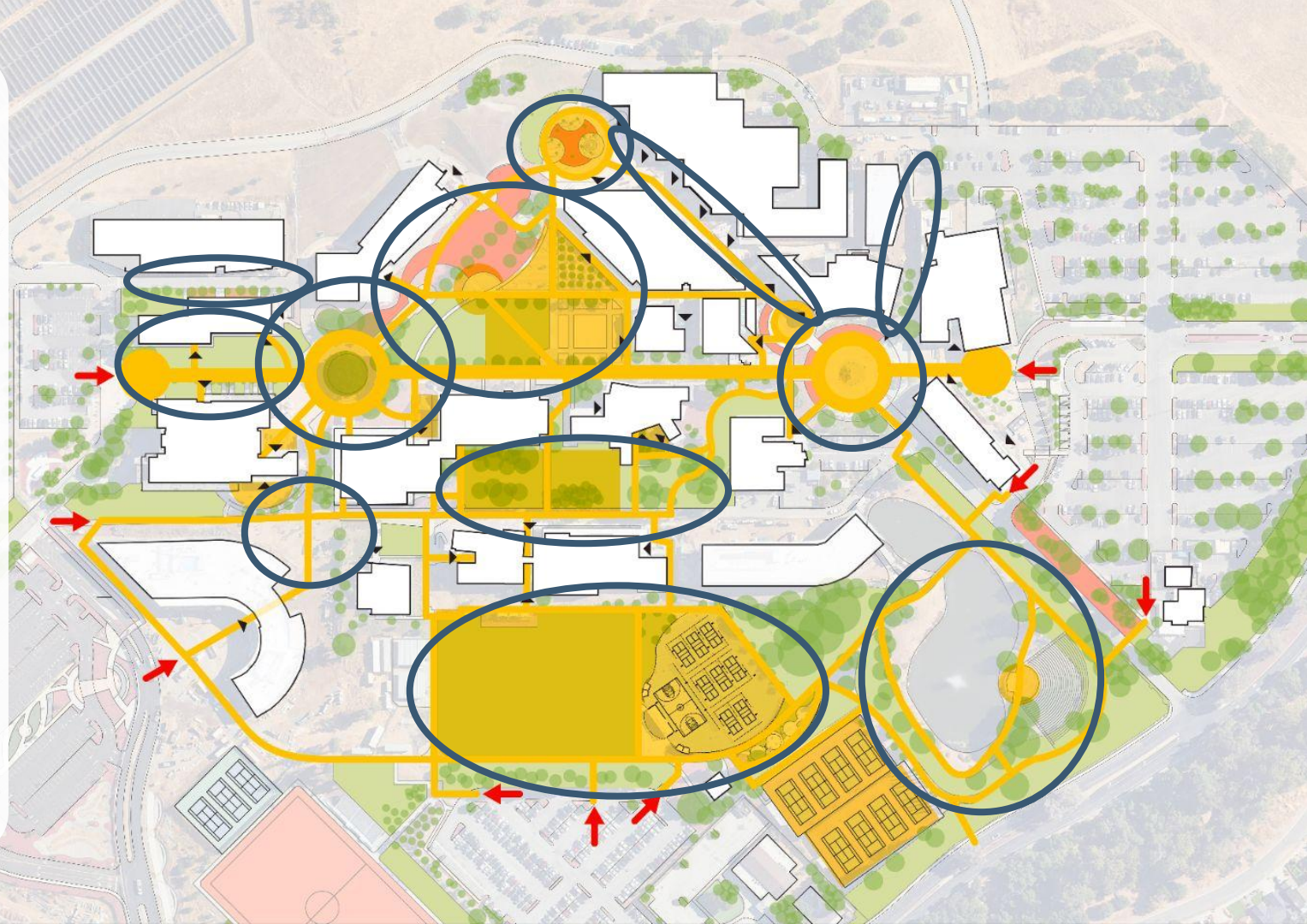


The image shows a complex industrial environment, likely a factory or power plant. In the foreground, there are large, vertical, cylindrical components, possibly parts of a turbine or generator, with a mix of white and green paint. A prominent green pipe runs vertically through the center. To the right, a yellow electric motor is mounted on a metal frame. The background is filled with more machinery, pipes, and structural elements, creating a dense and technical atmosphere. A semi-transparent white box with rounded corners is overlaid in the center, containing text.

Now would be the ideal time to make the campus all-electric and to improve energy efficiency.

There is a lot of outdoor space.

Energy across campuses is spread thin and not focused.



Outdoor gathering spaces can be improved to make people feel more protected, comfortable, and delighted.



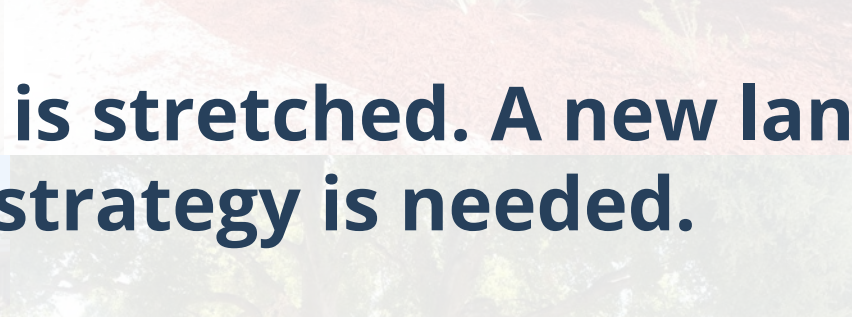


STUDENT SERVICES

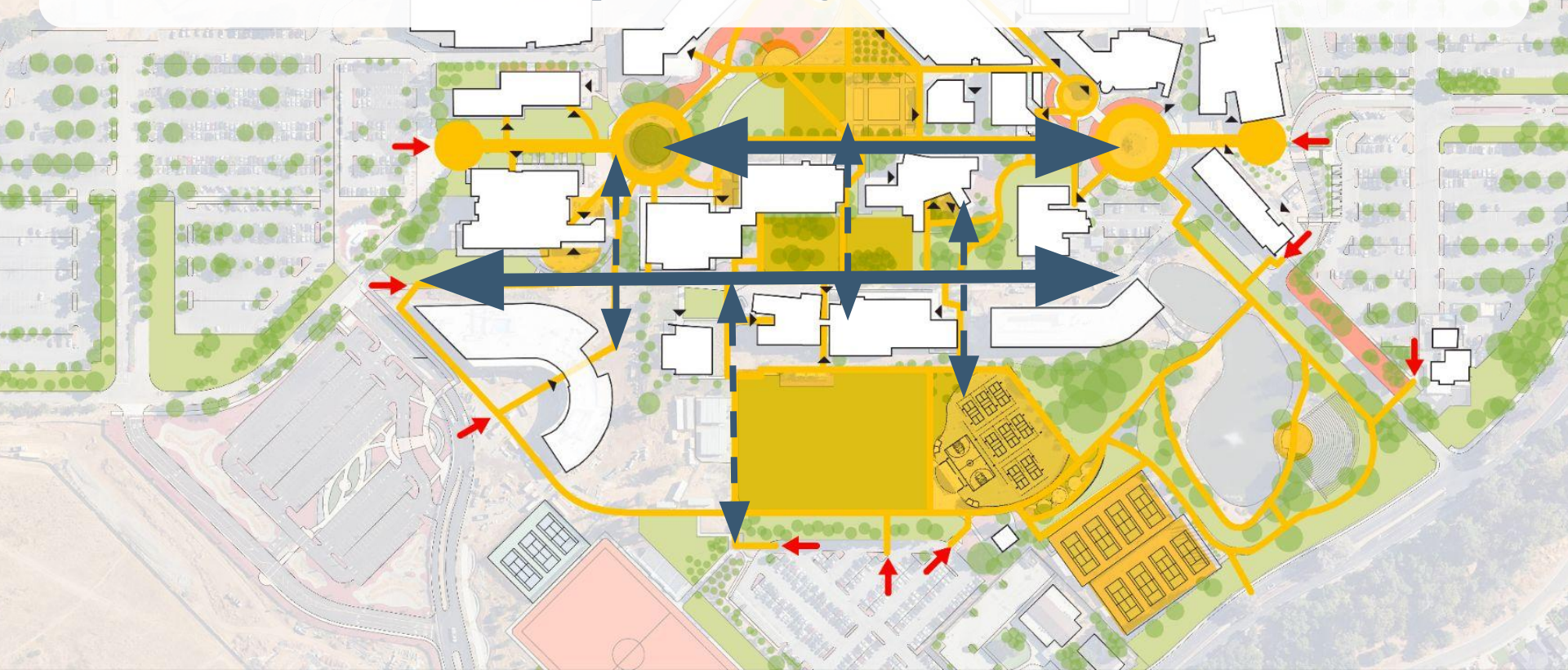
The largest gathering spaces could be better activated.



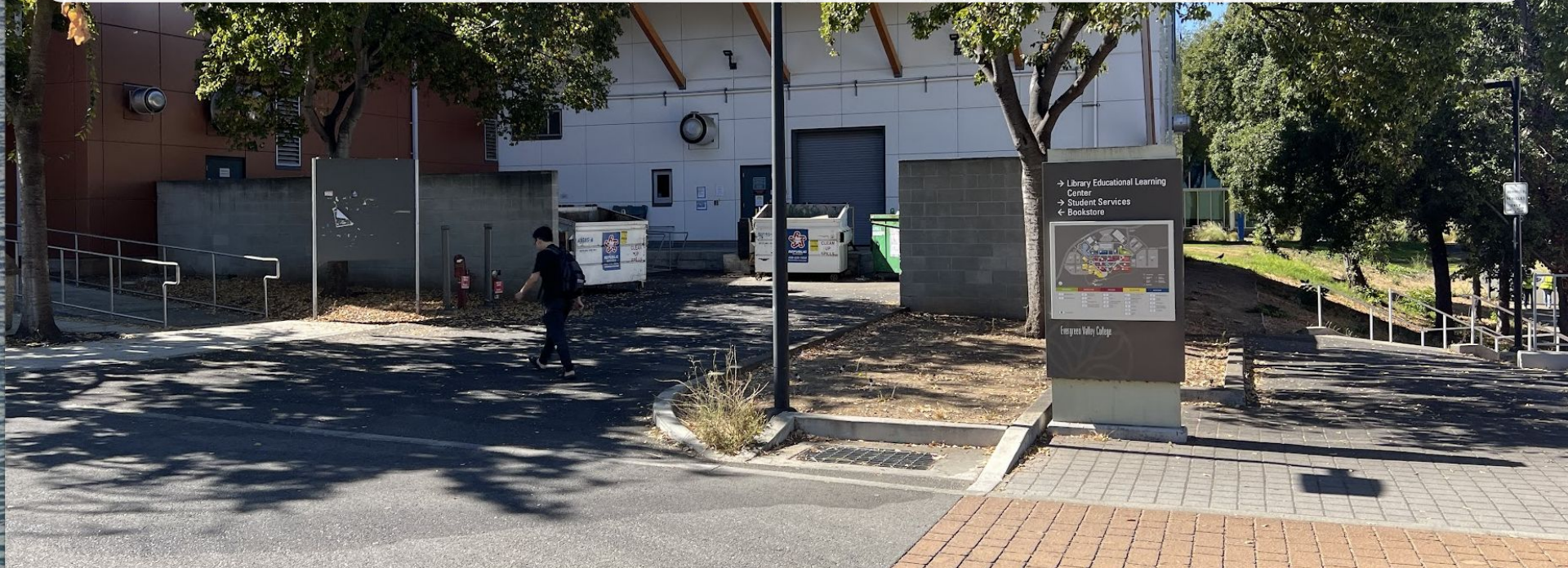
Maintenance is stretched. A new landscaping strategy is needed.



**East-west pathways are strongly designed.
North-south pathways need attention.**



Which is the front? Which is the back? Where does the back of house best go?



North-south connections need to be designed to better facilitate flow.



Stairs and elevators are not inclusive and/or inconvenient. Improving ADA access is important.



New buildings were the focus of the last FMP, infrastructure improvements, accessibility and maintenance are needed in this one.



Did we see things the way you see things?

What is important about campus facilities, to you?

A photograph of a classroom or computer lab. Students are seated at long tables, many with laptops open. At the front of the room, a woman is standing near a presentation screen. The screen displays a slide titled "Collecting Gases-contd." with a list of items. The room has a white ceiling with recessed lighting and a projector. An "EXIT" sign is visible above a door on the right.

People, Programs, and Space

Collecting Gases-contd.

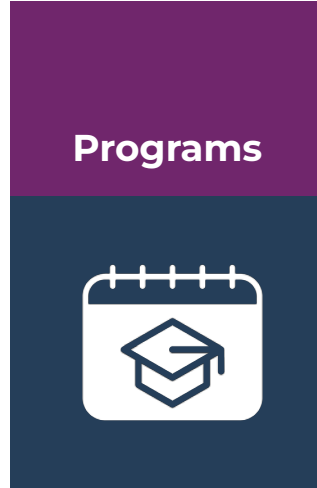
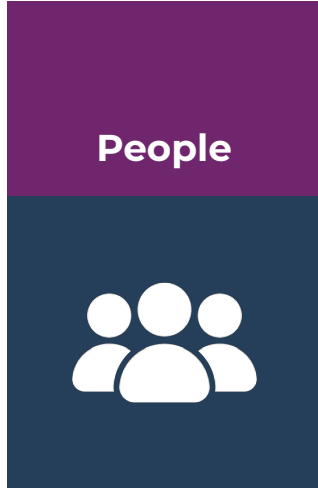
- If you collect a gas sample with a total pressure of 748.2 mmHg, at 25 °C, the partial pressure of the water vapor will be 23.76 mmHg—so the partial pressure of the dry gas will be 724.4 mmHg.
- Table 5.2

What is Space Planning?

Whom do we serve?

What do we do?

Where do we do it?

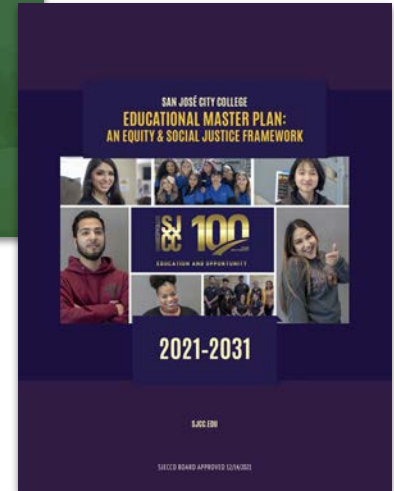


- What kind of space?
- How much?
- Where?
- Changes over time

The FMP will consider critical factors that affect space planning, consistent with missions and educational master plans

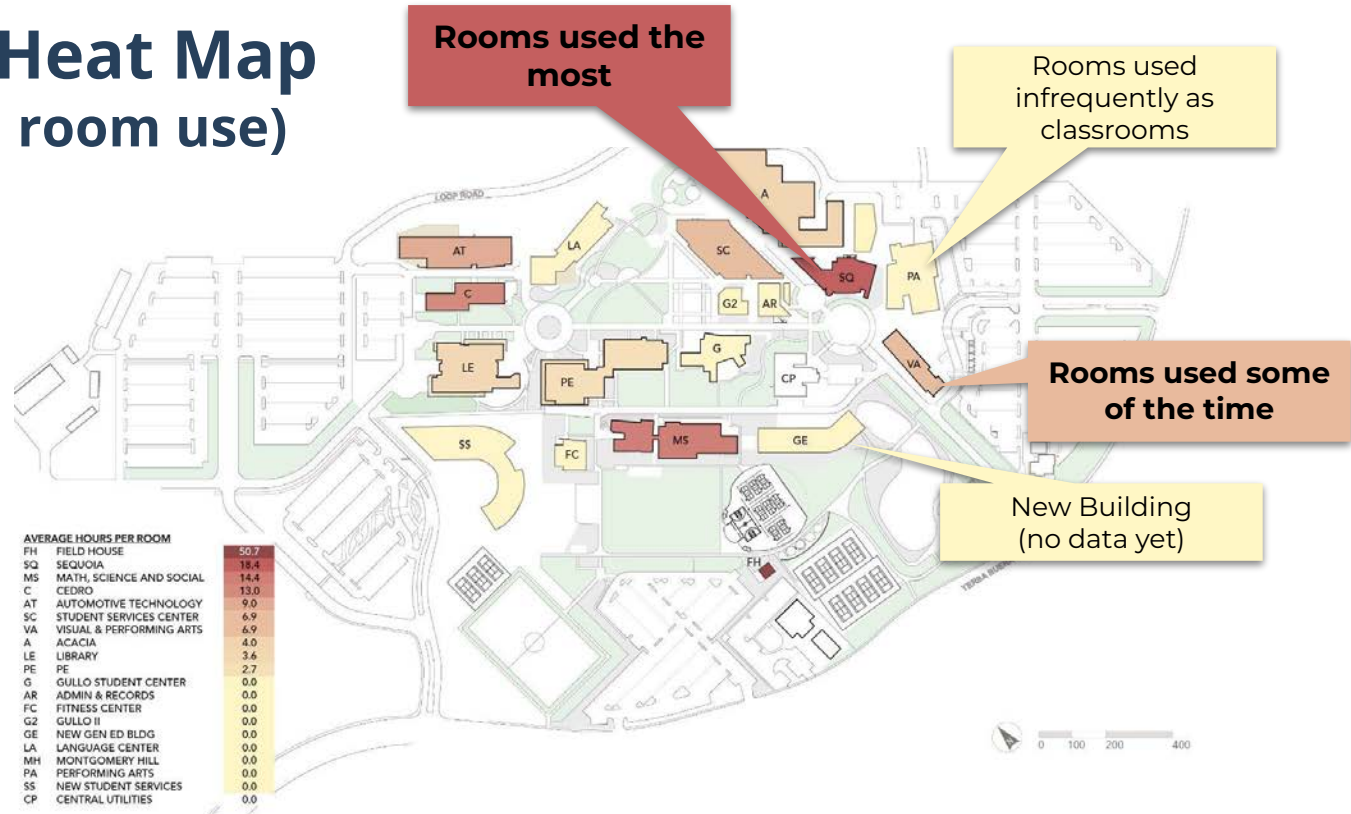
These plans define the future aspirations of the colleges in the District regarding academic programs, students, and community programs.

- Students
 - Future student markets given demographic changes
- Academic and Student Life & Support Programs
- Modes of Instruction
- Scheduling Patterns



Evergreen Heat Map (instructional room use)

The average number of hours instructional rooms are used ranges from 18.4 - 2.7 hours per week



Look at options and scenarios for facility use

- Explore **space management scenarios**
 - There is a lot of space! How can spaces be used more effectively?
- What does it take to have a **vibrant campus**?
 - Consider **bringing more students back** on campus
 - Create **centers of activity**.
 - Allocate more space for **student life and student support** programs.
 - Hold more **events for online students**.
 - Host events for the **campus or local community**.
- Look into **revenue generation**
 - Make space available for outside use.



The FMP is an opportunity to get creative about campus spaces

New buildings were the focus of the last FMP.

Infrastructure improvements,

repurposing existing spaces, and

renovations will be a focus in this FMP.

Making infrastructure improvements to operate more effectively

- Address maintenance needs
- Increase efficiency of buildings operations
- Consolidate the use of spaces

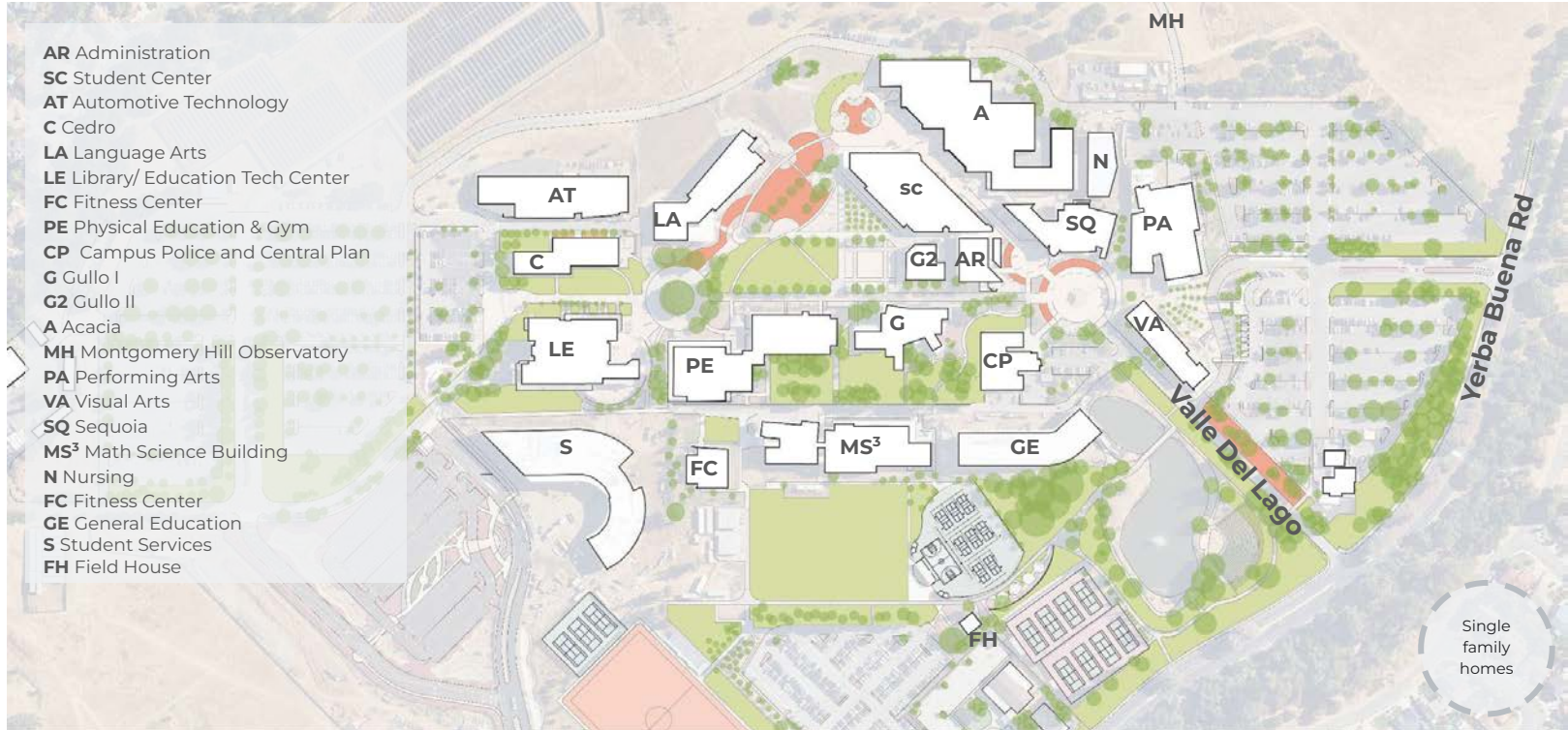
Repurposing existing spaces to improve campus life

- Support needs for gathering, studying, and club spaces

Renovating spaces to improve the way we learn

- Upgrading **specialized labs/spaces** with unique or state-of-art technology.
- Supporting **online and hybrid learning** through broadcast rooms or similar facilities.

We will address facility needs over the next 10 years. What is important for students?



A wide-angle photograph of a modern university campus under a clear blue sky. On the left, a building with a dark, angular facade and large glass windows stands prominently. A concrete walkway leads from the foreground towards the center, flanked by tall, feathery grasses. In the middle ground, a set of concrete stairs with metal railings leads up a slight incline. Further down the path, several black lampposts are visible. On the right, a long, multi-story building with a light-colored, horizontally-slatted facade and yellow horizontal accents is visible. A dark signpost in the foreground on the right lists campus directions: 'Math, Science & Social Studies', 'Sports Fields', 'Tennis Courts', and 'Parking Lot 6'. The overall scene is bright and clear, suggesting a sunny day.

Thank you!

↑ Math, Science &
Social Studies
Sports Fields
Tennis Courts
Parking Lot 6