

SJECCD Facilities Master Plan Update - Public Draft Overview

September 2025

Agenda

- Facilities Master Plan Overview
- Timeline
- Community Engagement
- Outline
- Methodology
- EVC Projects
- SJCC Projects (including Milpitas Extension)
- Cost Estimate Overview

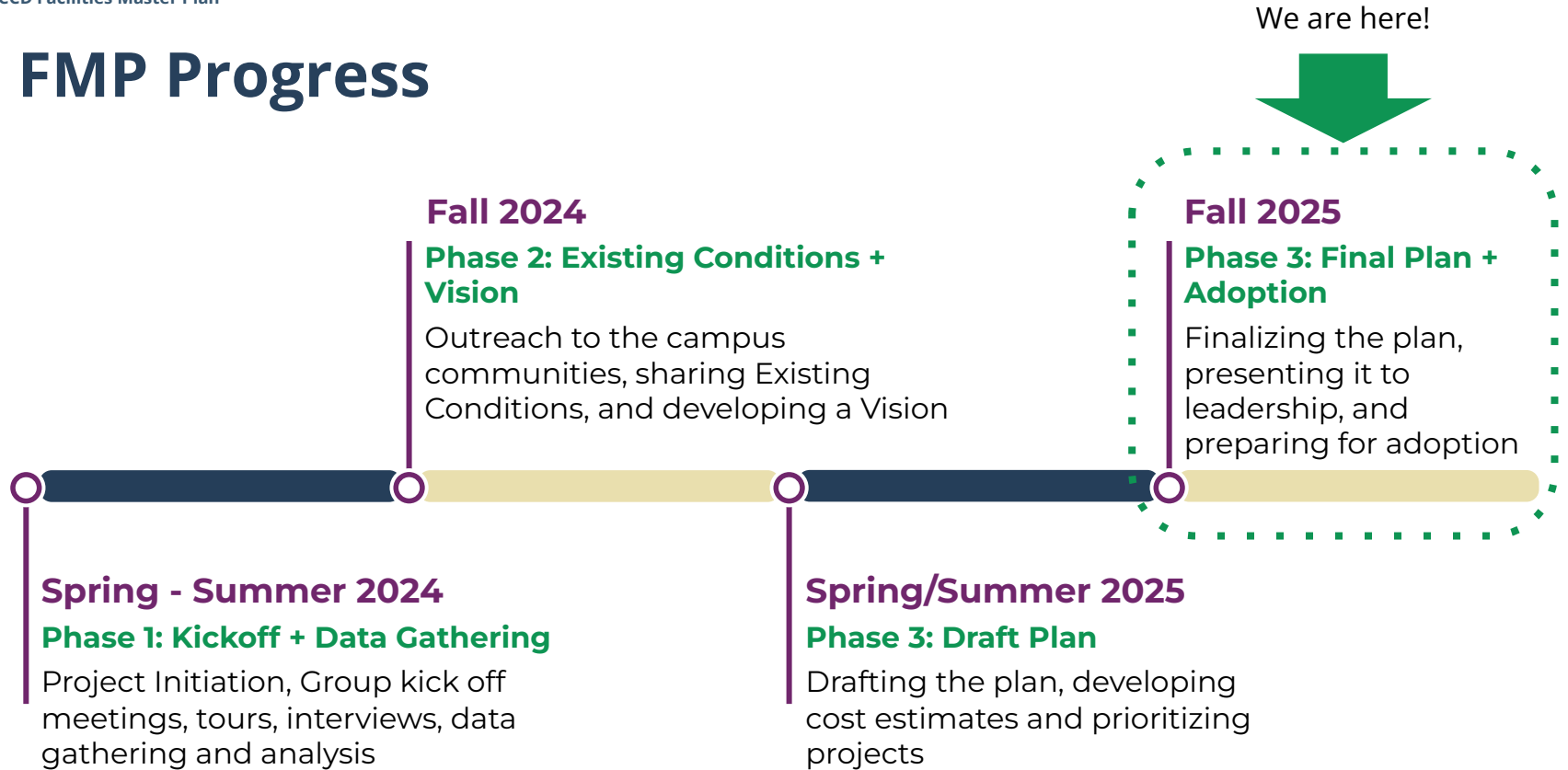
What is a Facilities Master Plan Update?

The SJECED Facilities Master Plan Update (FMP Update) is a comprehensive planning document that outlines how the district will develop, modernize, and invest in its facilities over a multi-year period (10 to 20 years). It is both a strategic and physical roadmap that links a district's educational goals with its buildings, infrastructure, and land use.

For the San José–Evergreen Community College District, the FMP Update will:

- Recommend updates for SJCC, EVC, and the Milpitas Extension.
- Support educational programs, basic needs, technology, and evolving workforce demands.
- Identify projects that improve student experience and community access.
- Guide investments ahead of potential funding efforts.

FMP Progress



Ch 1. Engagement Summary (To Date)

Community engagement continues to be inclusive, multimodal, and data-informed.

**Initial input
through online
survey**
May 2024

**Site Visits and
Data Gathering**
Summer 2024

**Focus Groups
and Meetings**
Fall 2024

**Districtwide
online survey**
April 29-June 8,
2025

**Campus
outreach and
open houses**
April-June 2025



Community Engagement Feedback Summary

- **Access & Infrastructure:** Improving transit, parking, and creating more shaded, pedestrian-friendly campuses with sustainable features.
- **STEM & Labs:** Modern, consolidated labs for sciences and outdoor teaching spaces.
- **Athletics & Wellness:** Addressing safety and equity issues in athletic facilities, and adding student wellness amenities (updated locker rooms).
- **Student Life:** More spaces for community, creativity, and belonging, like esports, makerspaces, and digital lounges, accessible beyond class hours. There were also calls for student housing and childcare resources.
- **Cultural Facilities:** Desire for a museum/planetarium, and improved arts facilities (ceramics).
- **Process Transparency:** Encouragement of meaningful engagement with stakeholders and clear communication on how feedback is used.

SJECCD Facilities Master Plan Update Outline



- Message from the Chancellor, Land Acknowledgements, Acknowledgements
- **Executive Summary**
- **Chapter 1: Introduction**
 - History, Planning Context, Outreach Summary
- **Chapter 2: The District, Programs, and People**
 - District Context, Enrollment and Space Projections
- **Chapter 3: Methodology and Framework**
 - Goals, Project Identification, Project Scoring, Cost Estimation, Implementation, Combined Project List
- **Chapter 4: District-wide Infrastructure Improvement Strategy**
 - Current Conditions and Challenges, Infrastructure Improvement Priorities, Sustainability Strategy, Projects, Implementation Considerations
- **Chapter 5: Evergreen Valley College Campus Plan**
- **Chapter 6: San Jose City College Campus Plan**
- **Appendix: Cost Estimate**

Engagement in Fall 2025: Final Plan and Adoption

Recent Meetings

- Meeting with Cabinet
August 20
- Meeting with EVC Leadership
August 25
- Meeting with SJCC Leadership
August 28
- FMP Task Force
September 4

Online



<https://sjeccd.edu/facilities-master-plan-task-force>

Online Survey Available
September 9 - October 9

Campus Stakeholders Roadshow

SJCC September 10	Milpitas Ext. September 17	EVC September 24	East San Jose October 8
Hybrid Forum 12pm	Online Forum 12pm	Hybrid Forum 12pm	
Hybrid Forum 4pm	Online Forum 3pm	Hybrid Forum 3pm	
Hybrid Forum 6pm	Hybrid Forum 6pm	Hybrid Forum 6pm	

Hybrid means “in-person” and “online” at the same time
This is the same presentation at each event.

- SJECCD Board Presentation
November 11
- SJECCD Board Hearing
December 9

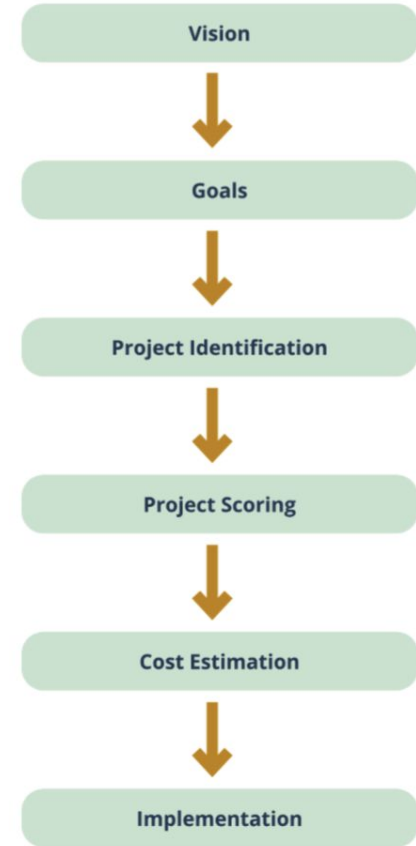
Ch. 3: FMP Update: Methodology

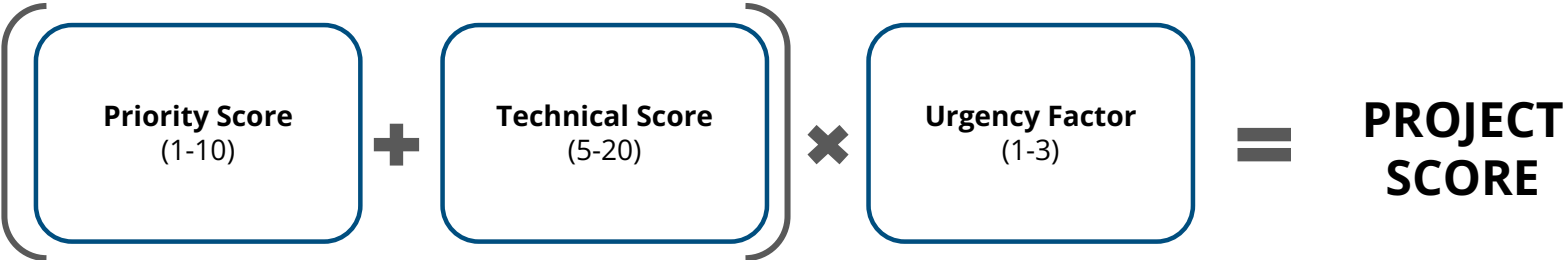
Vision

The FMP Update positions SJECED to invest in infrastructure and environments that are not only sustainable and adaptable, but also vibrant, beautiful spaces that invite learning, foster connection and strengthen community.

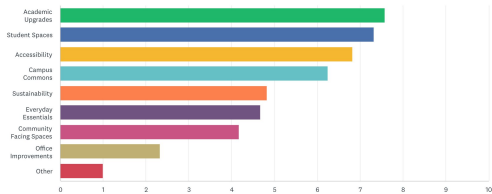
Goals

- Infrastructure Upgrades and Efficiency
- Academic Space Optimization
- District-wide Accessibility
- Student Centered Spaces
- Campus Commons & Sense of Place
- Sustainable Campus Design
- Everyday Essentials
- Community-Facing Spaces
- Healthy and Productive Workplaces

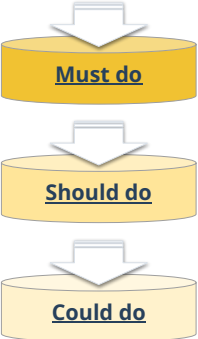




Please rank the following categories in order of priority, with the top being the highest priority and... [🔗](#) [👤](#)

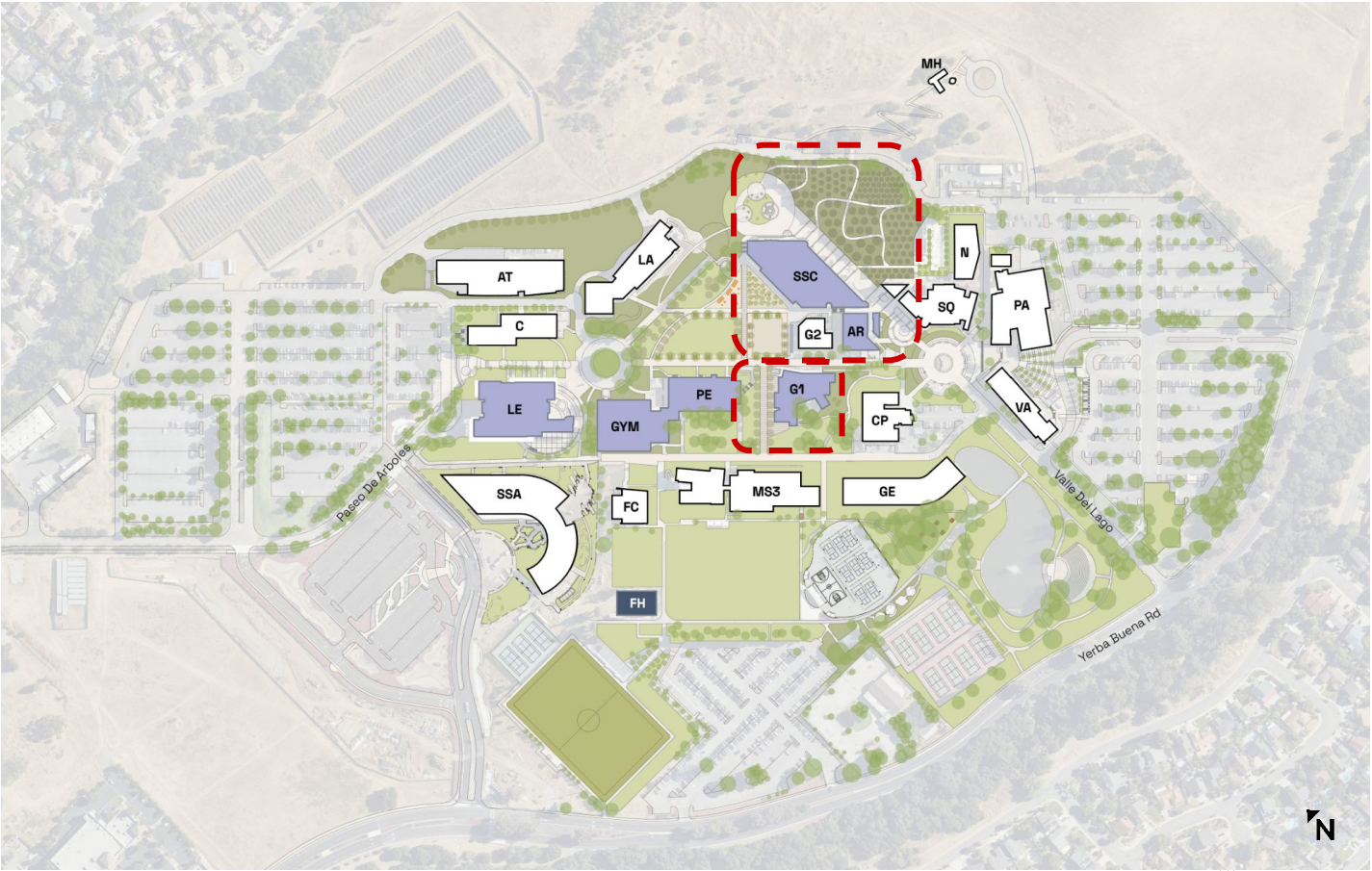


	Facility Condition	Facility Location Fit	Program Fit	Design Flexibility / Adaptability	Attractiveness
1	Ideal condition	Ideal location	Facility fits program	Well Designed	Attractive
2	Good condition	Good location	Program adapted to facility	Can be adapted	Appealing
3	Fair condition	Suboptimal location	Facility ill suited for program	Design challenge	Unappealing
4	Poor condition	Wrong location	Facility does not fit program	Not adaptable	Not attractive



Evergreen Valley College: Proposed Plan

- Proposed New Building
- Major Renovation Project
- Remaining As Is



Empty and underutilized buildings create a feeling of decline

- Energy across campuses is spread thin.
- Campuses need to strategically focus activity, especially student life.
- Outdoor spaces could be improved to make people feel more protected, comfortable, and delighted.

The FMP proposes moves away from the edges, to consolidate and reinvigorate the heart of campus.



Optimize, Repurpose, and Activate Existing Spaces



Renovate Level 1 of the Old SSC with social and public facing uses connected to the Central Plaza



Renovate Level 2 of the Old SSC to be labs, makerspace, and other academic uses

Adapt the former Student Services Center and former bookstore space to new uses

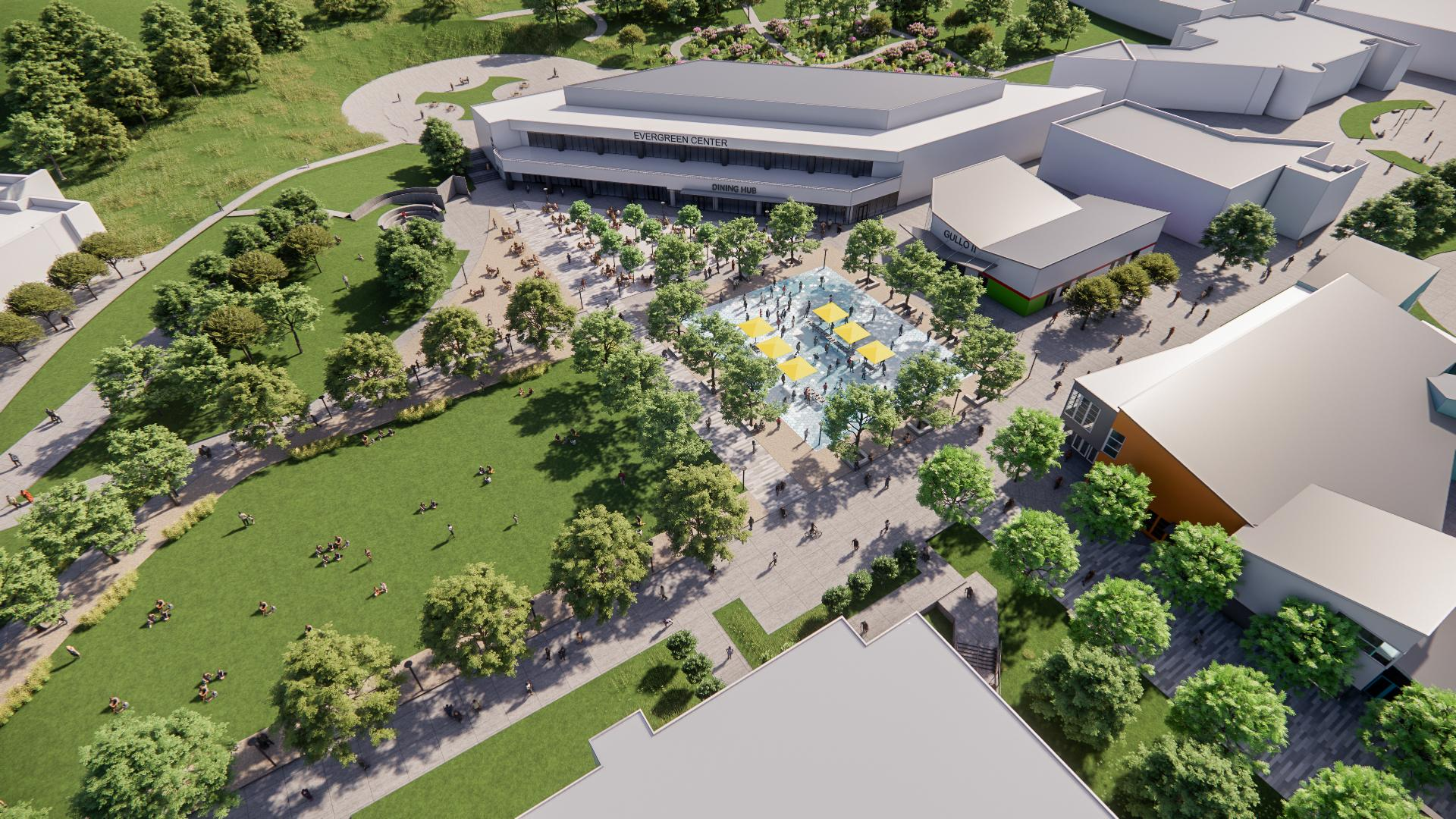
- Locate public-facing student-focused spaces and food around the Central Plaza (on SSC Level 1)
- Create specialized classrooms and incubator spaces for new programs (on SSC Level 2)
- Reutilize the bookstore space (Gullo I Level 2) for student club, study, and lounge spaces

Focus Social Energy at the Center of Campus

Activate public spaces by:

- Providing more seating, shade, and programming at the centers of campus
- Locating (or relocating) programming in buildings around campus centers
- Encouraging special events for large groups in central spaces with design
- Locating food in more centrally accessible places





Improve Circulation

- Improve circulation on campus north-south
- Create a more universally accessible campus by providing a level pathway between the Central Plaza and MS³
- Remove back of house facing Central Plaza to better activate the public spaces



Renovate the bookstore at Gullo I to be student clubs



Renovate Gullo I to remove the kitchen (relocate to old SSC), improve circulation and gathering.



→ Bldg 1
Bldg 2
Engineering Center
→ Physical Education
Gymnasium
→ Campus Police
Center & Elevator

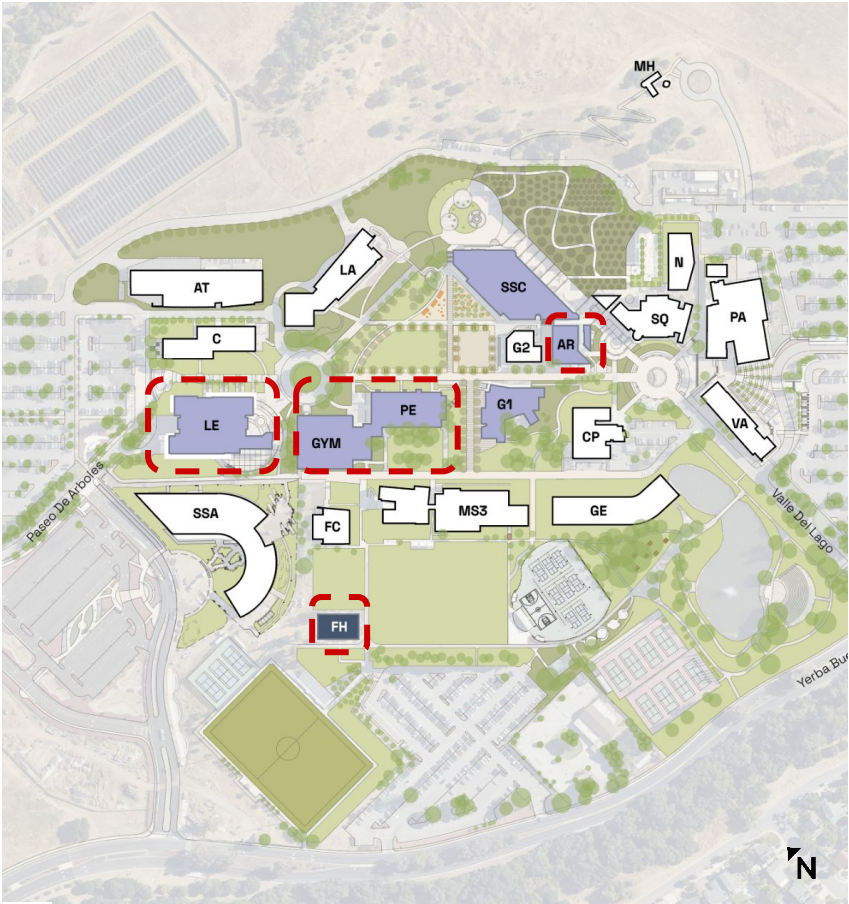
QUILO



Renovate the Gym and Locker Rooms in PE



Renovate internal programming and circulation in LETC



- Proposed New Building
- Major Renovation Project
- Remaining As Is



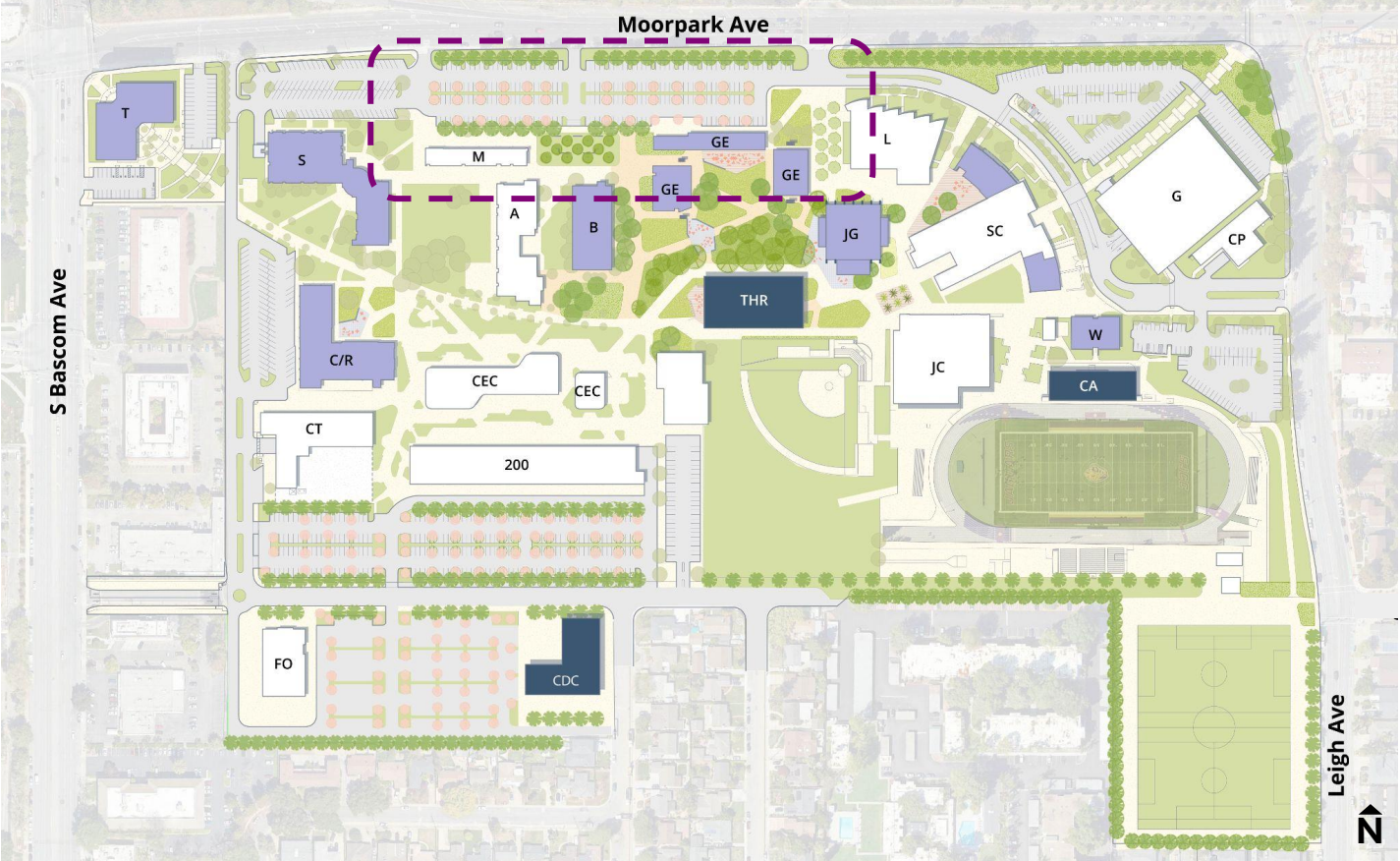
Reprogram A&R to become a Student Resource Hub



Replace portables and field house with a new permanent structure

San Jose City College: Proposed Plan

- Proposed New Building
- Major Renovation Project
- Remaining As Is



Improve the Campus Entry and Navigation



- Make the campus entrance more obvious along the Moorpark frontage
- Create a consistent signage, wayfinding, and branding program (like EVC)
- Improve circulation in parking lots



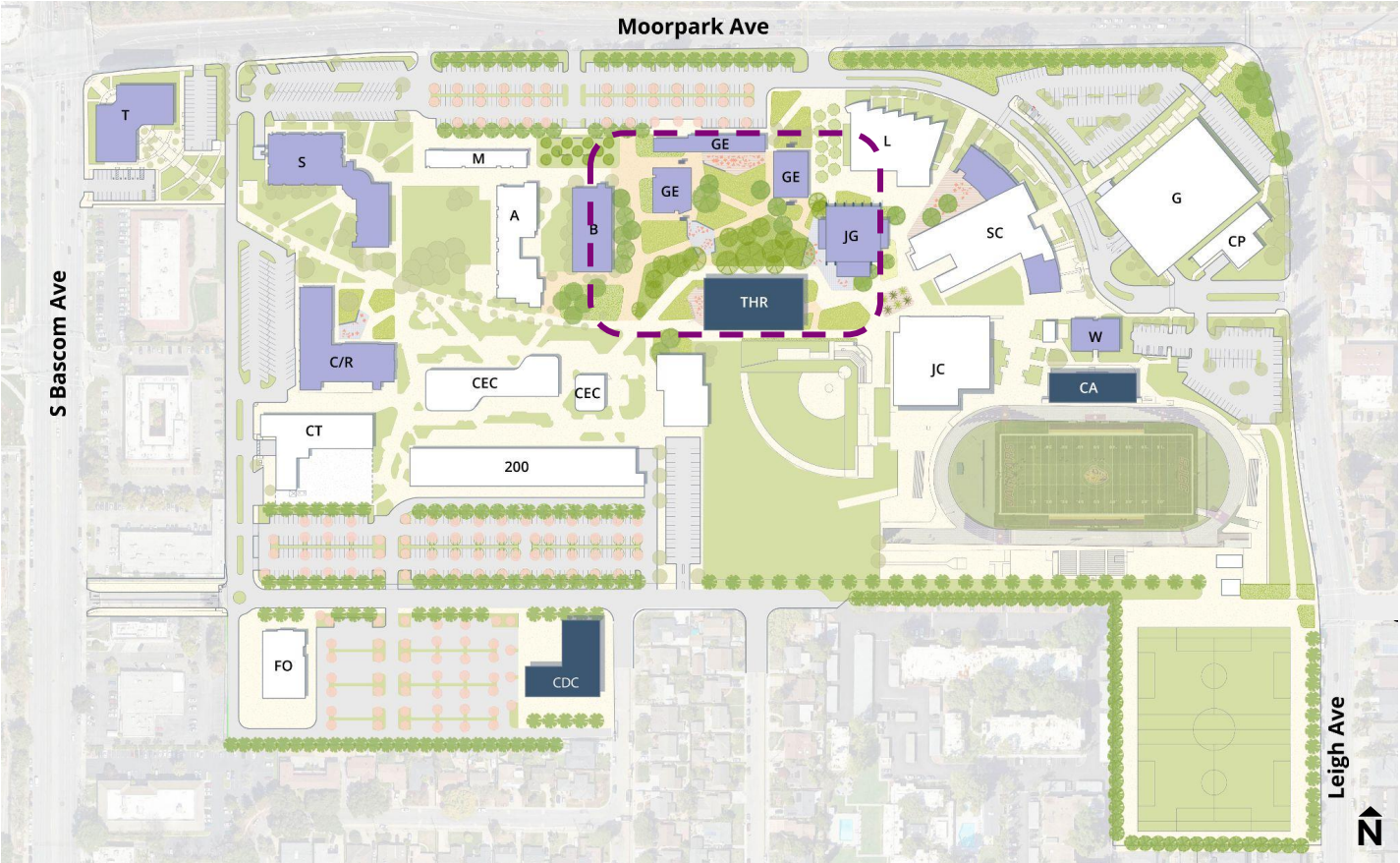


SUNSHINE CITY COLLEGE

Health Career Center

San Jose City College: Proposed Plan

- Proposed New Building
- Major Renovation Project
- Remaining As Is



Create a more consistent landscape

- Extend the native planting landscape framework near Science and the CEC throughout campus
- Provide more places to gather with low built-in seating
- Locate building entrances, uses, programming, and events to activate social spaces
- Enhance unique settings with landscaping, public art, and beautiful buildings







Optimize and Repurpose Existing Spaces



- Fix problems in underperforming rooms
- Redesign rooms to be more flexible and adaptable
- Create more specialized classrooms for programs that have demand
- Schedule underutilized rooms with more programming
- Decommission some spaces (“mothball”) at the edges of campus (e.g. Tech Building, Building 100) to focus energy at the center of campus

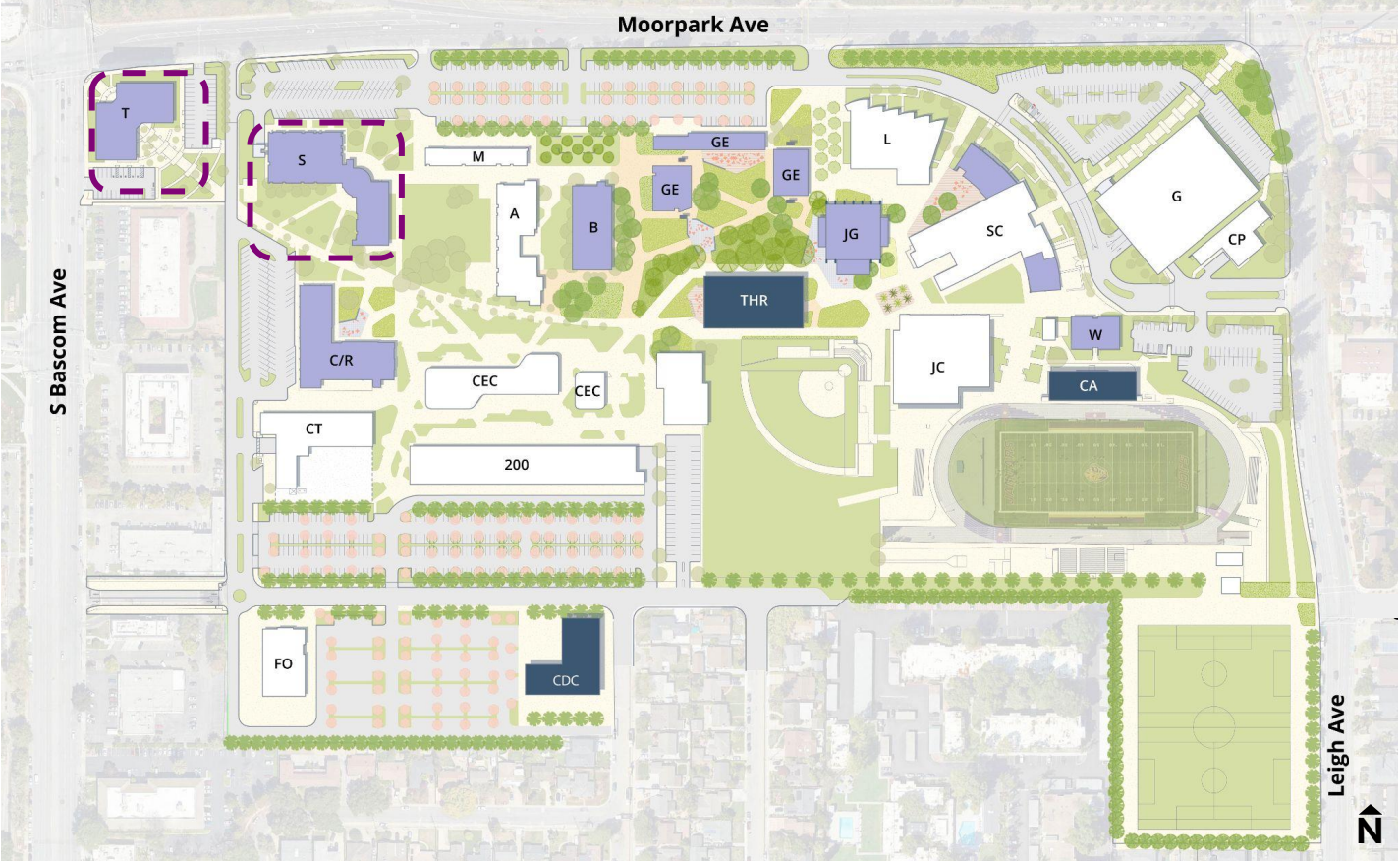
SJECCD Facilities Master Plan



Gradually move out of Tech Center and consolidate uses to the center of campus



Convert classrooms into (4) labs in Science



- Proposed New Building
- Major Renovation Project
- Remaining As Is

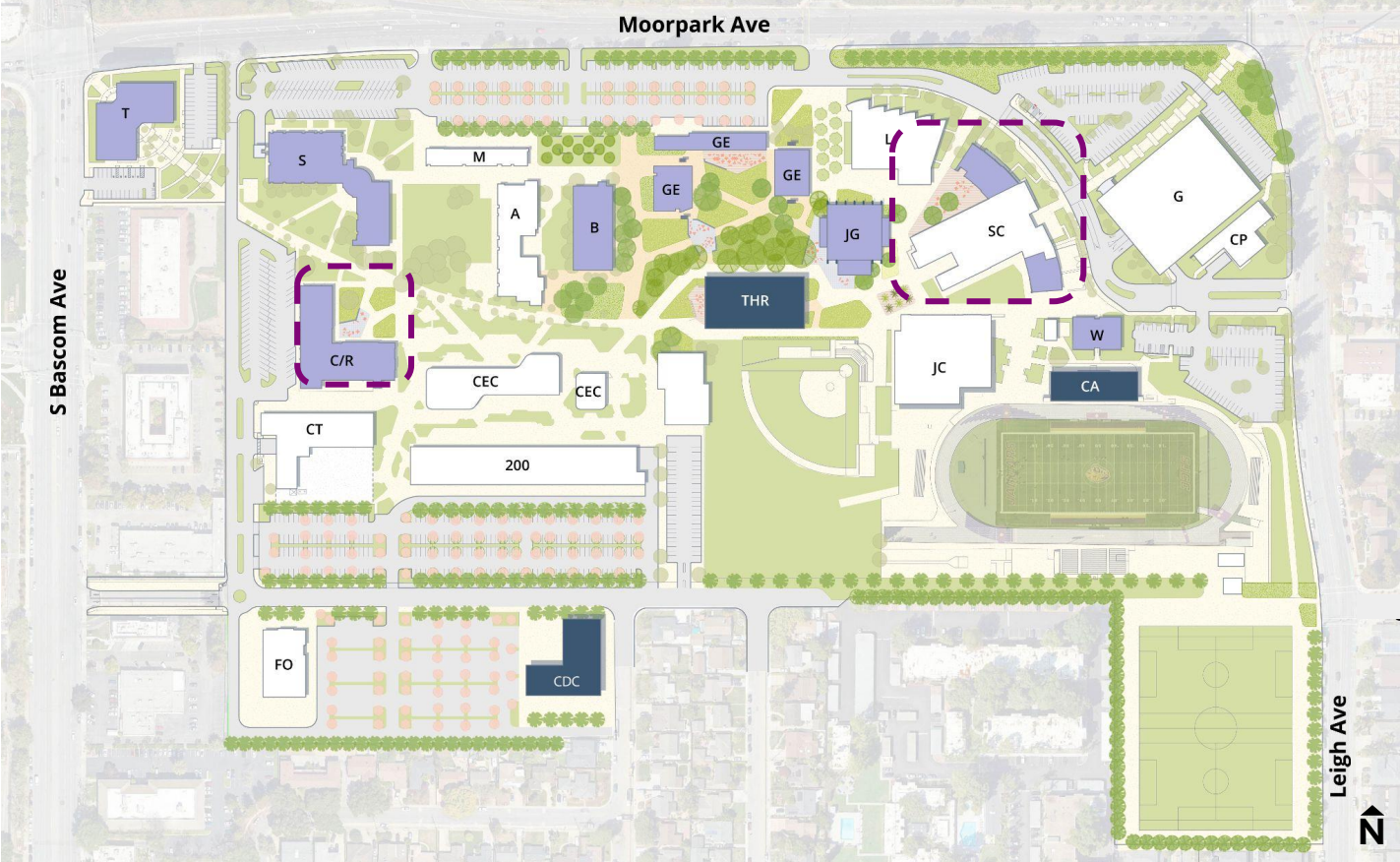
SJECED Facilities Master Plan



Expand Cosmetology into
Reprographics



Renovate the former bookstore
space in the Student Center to be
student facing. Update the
kitchen in the cafeteria.



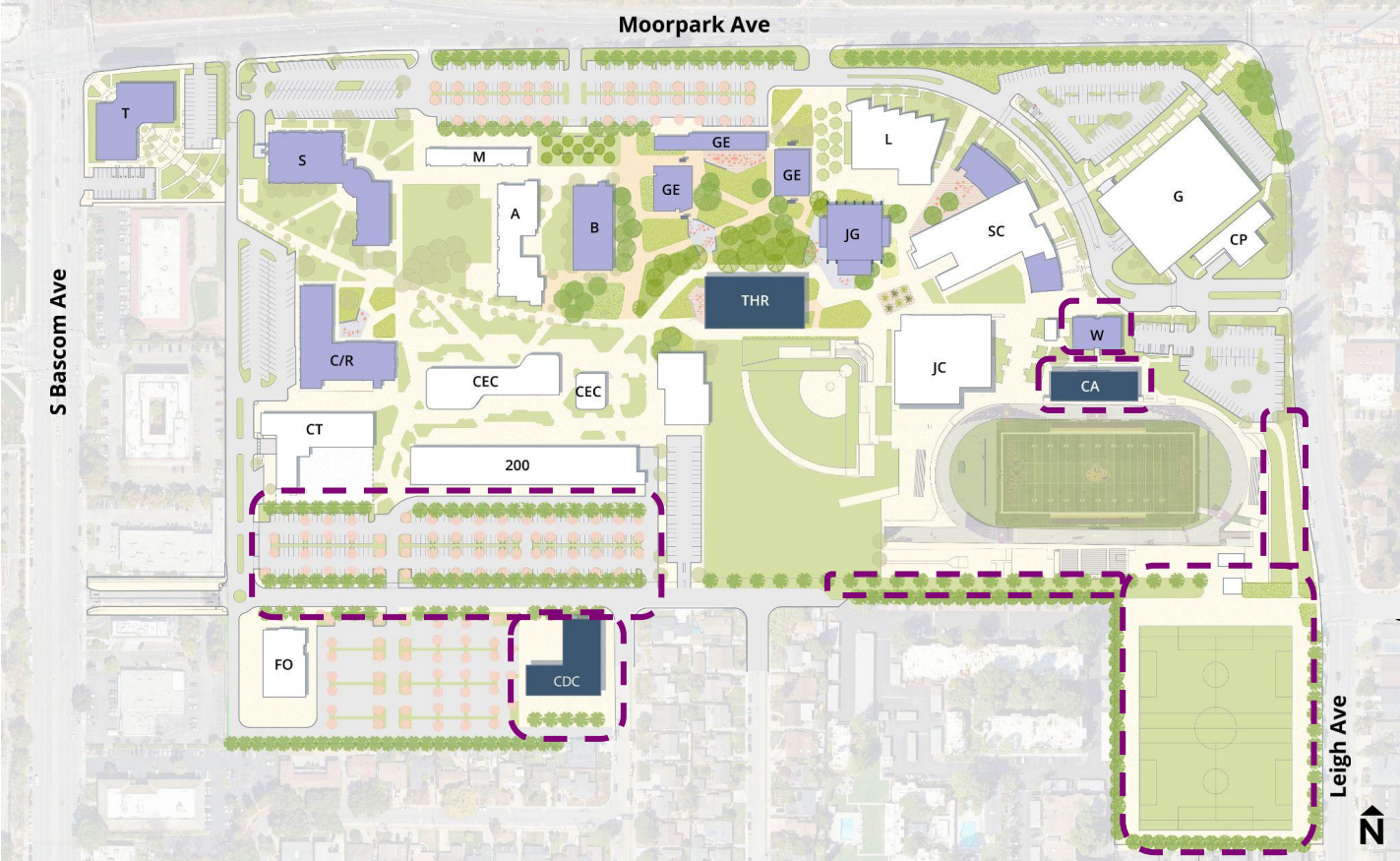
- Proposed New Building
- Major Renovation Project
- Remaining As Is



Relocate Adaptive PE to the Wellness Center and remove Building 100. Reconfigure the Bascom Parking lot to be more efficient and intuitive. Add a new Child Development Center.



Redesign the recreation field and improve access to it. Replace the existing bleachers and press box with bleachers over PE facilities.



- Proposed New Building
- Major Renovation Project
- Remaining As Is

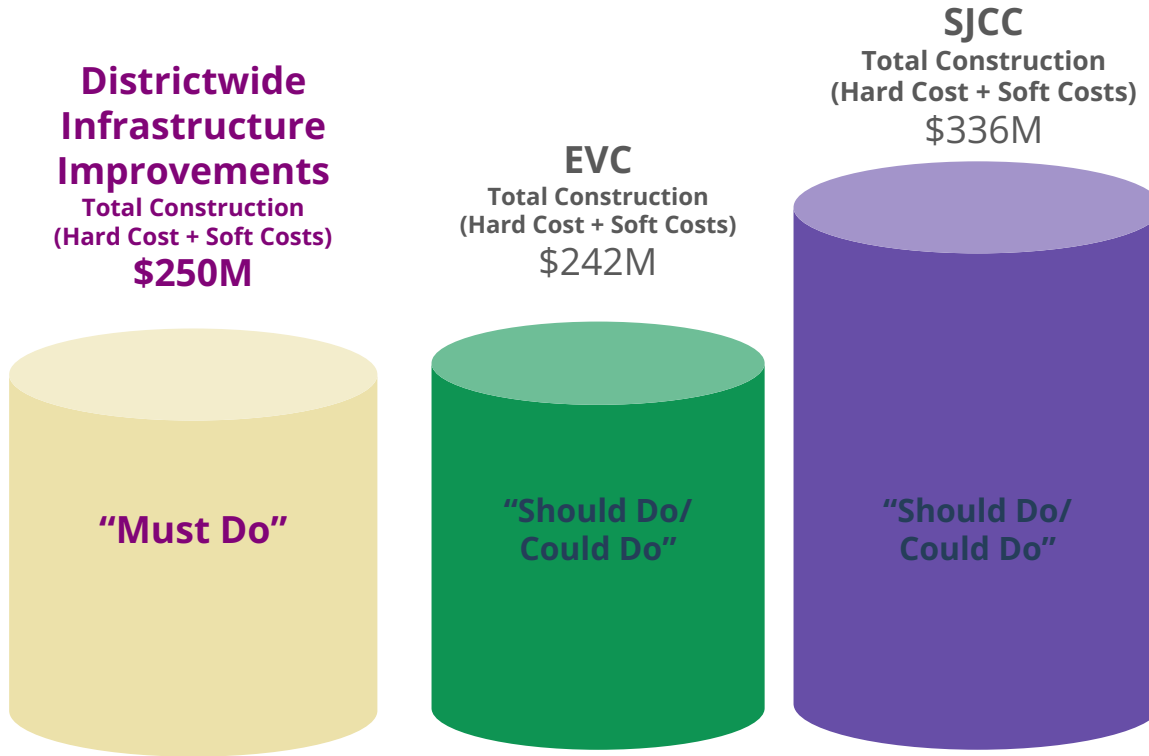
Milpitas Extension

- Facility is in good condition but reaching max capacity due to dual enrollment and integration of Adult Education programs
- Current classrooms are fully utilized limiting availability for other uses or rentals
- New wing to add office and administrative space or instructional space
- Infrastructure upgrades and site improvements are also factored in



- Proposed New Building
- Major Renovation Project
- Remaining As Is

Cost Overview (Mid-Range Estimates)



Estimate Assumptions:

All cost estimates are projected to 2027.

Cost Estimates include 20% design contingency and escalation.

Cost estimates exclude the cost of operations and maintenance.

SJECCD “Must Do” Essential Projects - Infrastructure

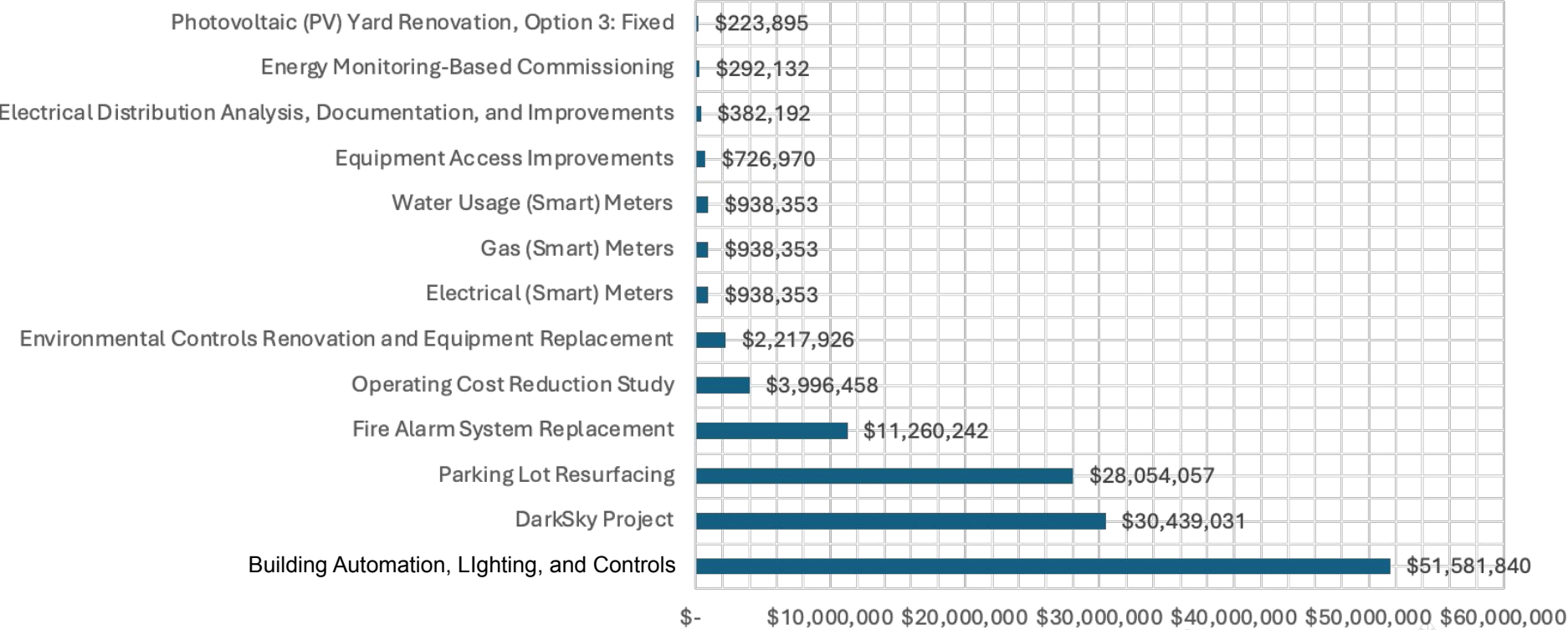
If there is limited funding, these are the priority. (Maximum Potential Score = 90)

Total (Mid Range) =
~\$250m

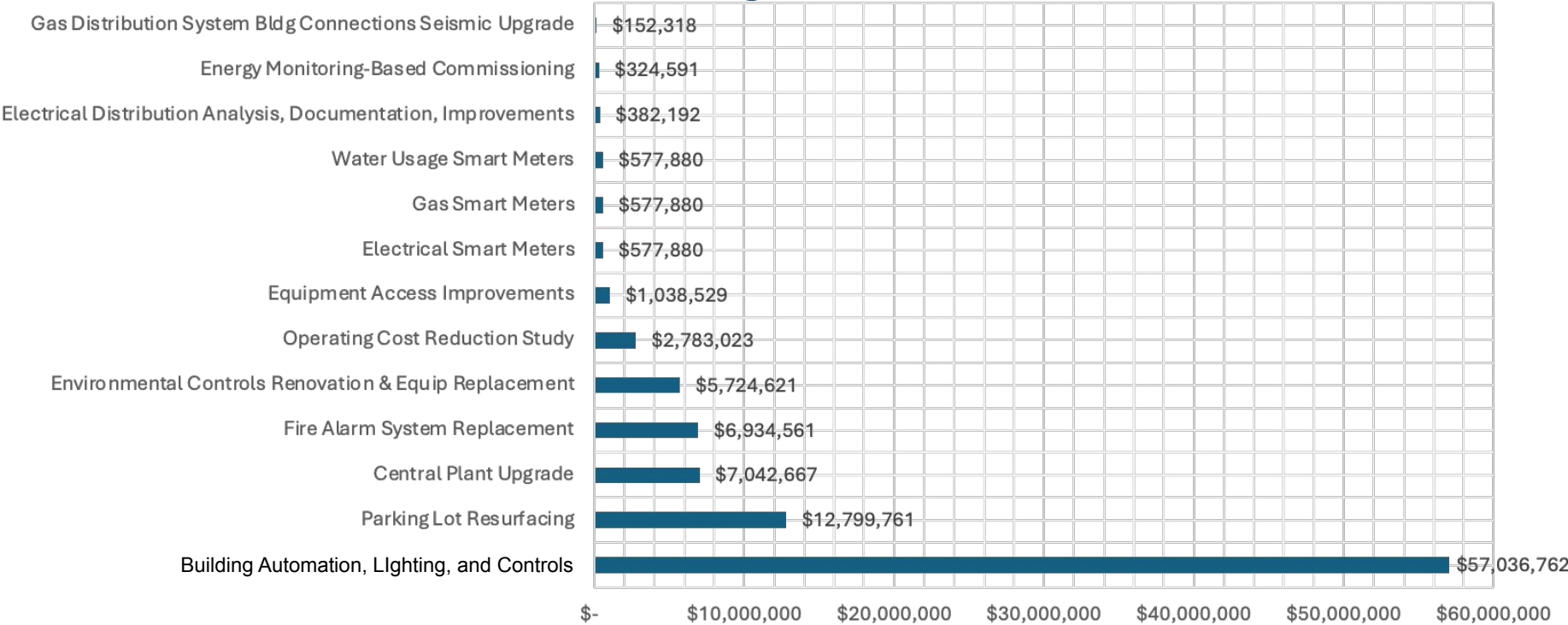
SJECCD Facilities Master Plan Update Project List

Campus	No.	Project	Score	Category	Hard Costs	Soft Costs	TOTAL COST	Cumulative Total	\$ Milestones
	EVC-I2	Operations Cost Reduction Project	90	Infrastructure	\$6,421,538	\$3,123,934	\$9,545,472	\$9,545,472	
	SJCC-I2	Operations Cost Reduction Project	90	Infrastructure	\$7,081,217	\$3,484,658	\$10,565,875	\$20,111,347	
	EVC-I1	Campuswide Infrastructure Improvement Projects	90	Infrastructure	\$90,499,141	\$31,945,192	\$122,444,332	\$142,555,679	
	SJCC-I1	Campuswide Infrastructure Improvement Projects	90	Infrastructure	\$63,049,108	\$22,337,680	\$85,386,789	\$227,942,468	
	EVC-A1	Acacia Demolition and Landscaping	90	Infrastructure	\$14,113,519	\$4,939,732	\$19,053,251	\$246,995,719	
SUBTOTAL ESSENTIAL INFRASTRUCTURE PROJECT COSTS					\$ 181,164,524	\$ 65,831,196	\$ 246,995,719		\$250 Million

EVC Infrastructure Projects



SJCC Infrastructure Projects

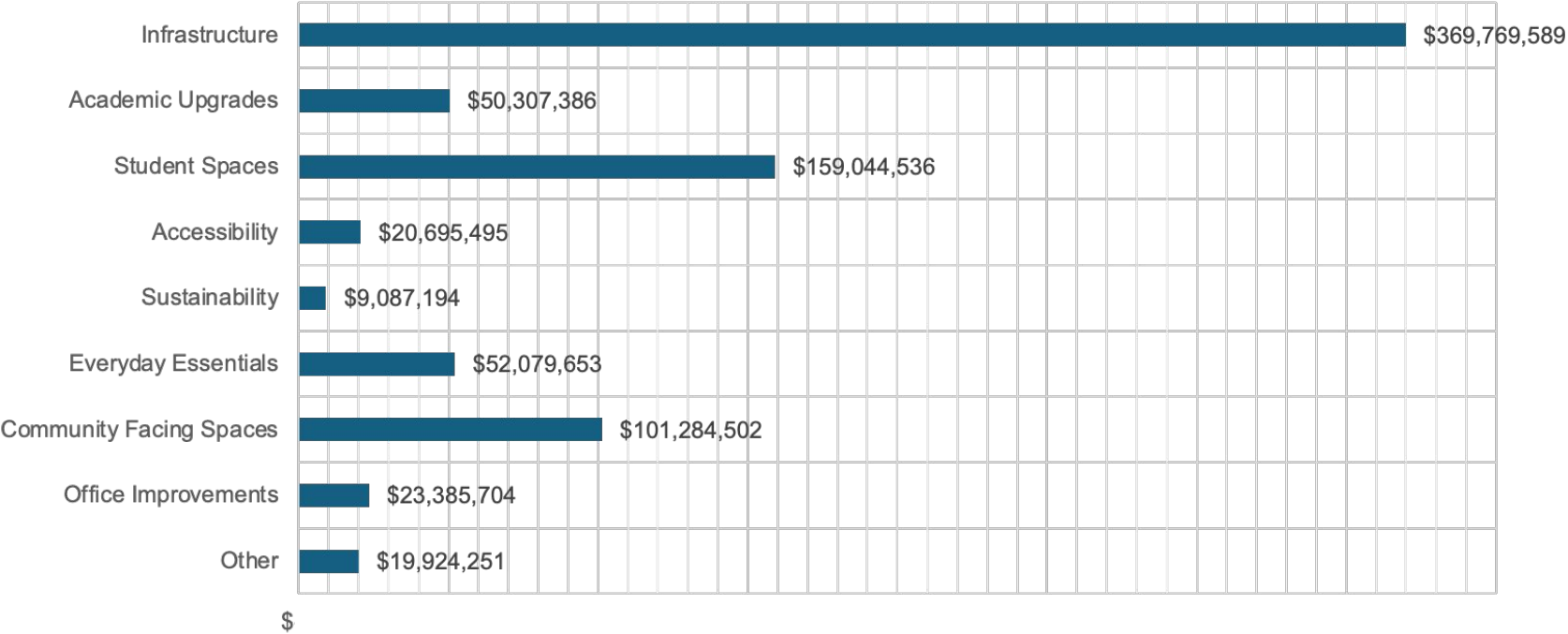


SJECDD “Should/Could Do” Projects

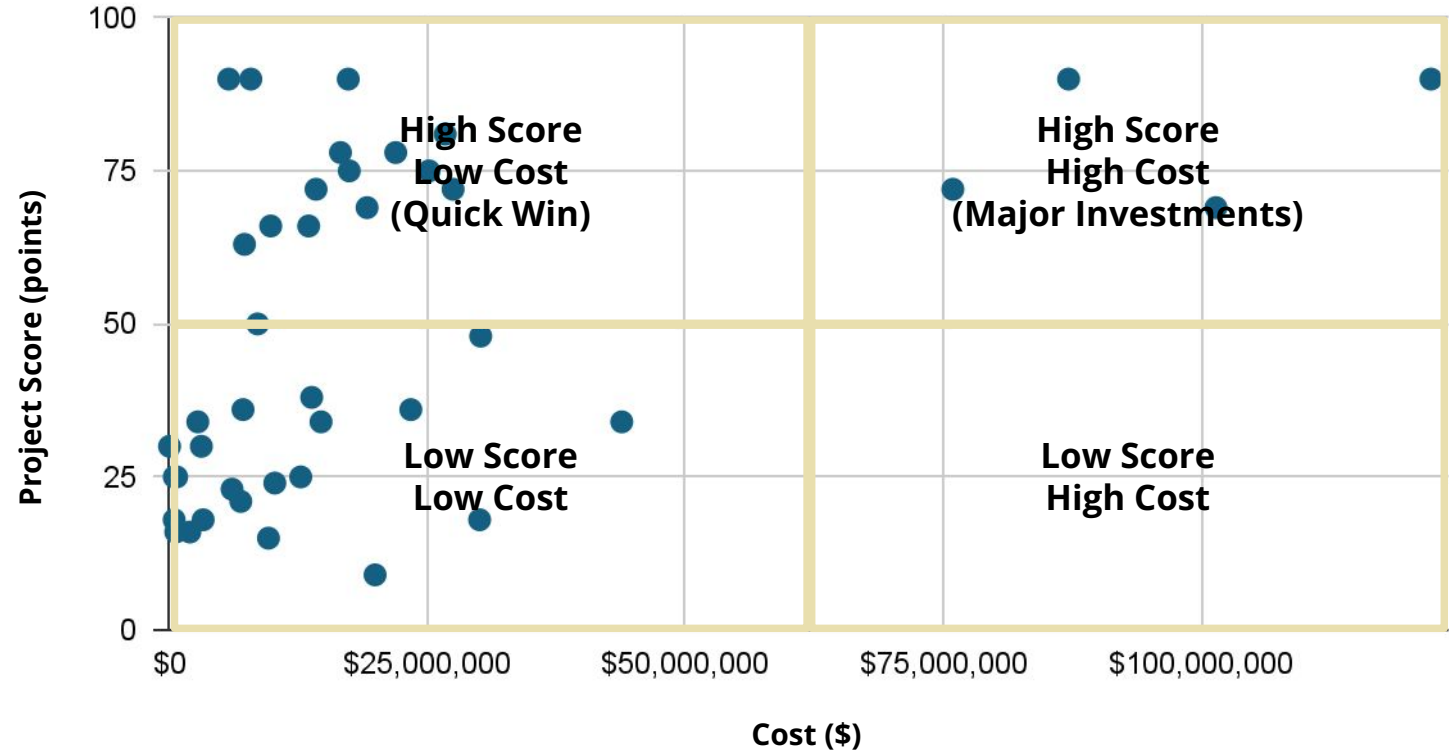
SHOULD/COULD DO PROJECTS COMBINED SUMMARY

SJCC	SJCC-GE	Central Office (GE)	81	Infrastructure	\$20,041,351	\$7,014,473	\$27,055,823	\$274,051,542	
SJCC	SJCC-JG	Jaguar Gym	78	Infrastructure	\$15,006,235	\$5,252,182	\$20,258,417	\$294,309,959	
SJCC	SJCC-C/R	Cosmetology	78	Academic Upgrades	\$7,879,200	\$2,757,720	\$10,636,919	\$304,946,879	\$300 Million
SJCC	SJCC-D/THR	Theater Arts Demo & Landscaping	75	Accessibility	\$13,299,274	\$4,654,746	\$17,954,019	\$322,900,898	
EVC	EVC-G	Gullo I	75	Student Spaces	\$14,022,936	\$4,908,028	\$18,930,964	\$341,831,862	
SJCC	SJCC-B	Healthcare Career (Business)	72	Infrastructure	\$10,518,333	\$3,681,417	\$14,199,750	\$356,031,611	
EVC	EVC-PE/FH	PE Portables & Field House	72	Everyday Essentials	\$14,610,048	\$5,113,517	\$19,723,565	\$375,755,176	
EVC	EVC-LE	Library Education Tech Center	72	Student Spaces	\$19,112,265	\$6,689,293	\$25,801,558	\$401,556,734	\$400 Million
EVC	EVC-SC	Evergreen Center (Old SSC)	69	Student Spaces	\$76,938,896	\$26,928,613	\$103,867,509	\$505,424,243	\$500 Million
EVC	EVC-PEa	Physical Education & Gymnasium	69	Infrastructure	\$14,526,548	\$5,084,292	\$19,610,840	\$525,035,082	
SJCC	SJCC-SC	Student Center	66	Student Spaces	\$7,736,671	\$2,707,835	\$10,444,506	\$535,479,588	
SJCC	SJCC-S	Science Complex	66	Academic Upgrades	\$3,752,006	\$1,313,202	\$5,065,208	\$540,544,796	
SJCC	SJCC-CA	North Bleachers, Press Box, and Recreation Fields	63	Community-Facing Spaces	\$26,384,492	\$9,234,572	\$35,619,065	\$576,163,861	
SJCC	SJCC-CDC	New Child Development Center	48	Everyday Essentials	\$22,341,103	\$7,819,386	\$30,160,489	\$606,324,350	\$600 Million
SJCC	SJCC-NTH	New SJCC Theater	46	Community-Facing Spaces	\$44,115,673	\$15,440,486	\$59,556,159	\$665,880,508	
EVC	EVC-AR	Student Resource Hub (A&R)	38	Everyday Essentials	\$1,626,370	\$569,230	\$2,195,600	\$668,076,108	
SJCC	SJCC-T	Technology Center	36	Office Improvements	\$17,322,744	\$6,062,960	\$23,385,704	\$691,461,813	
EVC	EVC-VA	Visual Arts	36	Academic Upgrades	\$2,886,144	\$1,010,150	\$3,896,294	\$695,358,106	
SJCC	SJCC-ME	Milpitas Extension Dual Enrollment Expansion	34	Academic Upgrades	\$10,912,330	\$3,819,315	\$14,731,645	\$710,089,751	\$700 Million

Project Costs By Ranked Category



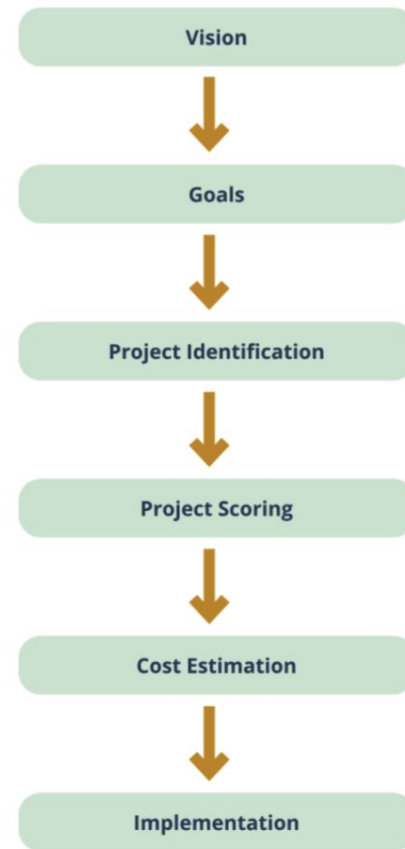
Evaluating Projects by Project Score and Cost



This Plan Prepares for Future Investment

Given that the Districtwide FMP investment needed is \$800million+ (mid-range), funding capacity will mostly determine what gets built, when, and how. The following factors will influence whether a project moves forward:

1. **Bond capacity & timing:** Project phasing will be tied to available funds and voter-approved bond measures.
2. **State & external funding:** Grants, partnerships, and cost-sharing opportunities will be key to supplementing local resources.
3. **Project sequencing & dependencies:** Some projects must be completed before others can begin. Careful coordination of site access, utilities, swing space, and program move will be essential.
4. **Trade-offs:** Lower-priority projects may be deferred to maintain overall budget balance.
5. **Ongoing operational and maintenance costs:** Long-term facility costs will need to be factored into project selection and design decisions.



Opportunities to Get Involved

Online



<https://sjeccd.edu/facilities-master-plan-task-force>
Online Survey Available
September 9 - October 9

Campus Stakeholders Roadshow

SJCC September 10	Milpitas Ext. September 17	EVC September 24	East San Jose October 8	SJECCD Board Presentation November 11
Hybrid Forum 12pm	Online Forum 12pm	Hybrid Forum 12pm		
Hybrid Forum 4pm	Online Forum 3pm	Hybrid Forum 3pm		SJECCD Board Hearing December 9
Hybrid Forum 6pm	Hybrid Forum 6pm	Hybrid Forum 6pm		

Hybrid means “in-person” and “online” at the same time
This is the same presentation at each event.