



# SJECCD Facilities Master Plan Kick Off Meeting with the Facilities Task Force

June 3, 2024 2:00pm-4:00pm



FIELD  
PAOLI

# Agenda

- Introductions
- Facilities Master Plan Introduction
- Overview of Outreach to Date
- Questions for Discussion
- Next Steps



# Facilities Task Force Members

## District

- Edwin Chandrasekar - Project Sponsor/Facilitator
- Toby Smith - AVC Physical Plant Development and Operations
- Sue Dale - District Managed Facilities
- Bala Kappagantula - Information Technology Representative
- Ryan Brown - Public Information Officer

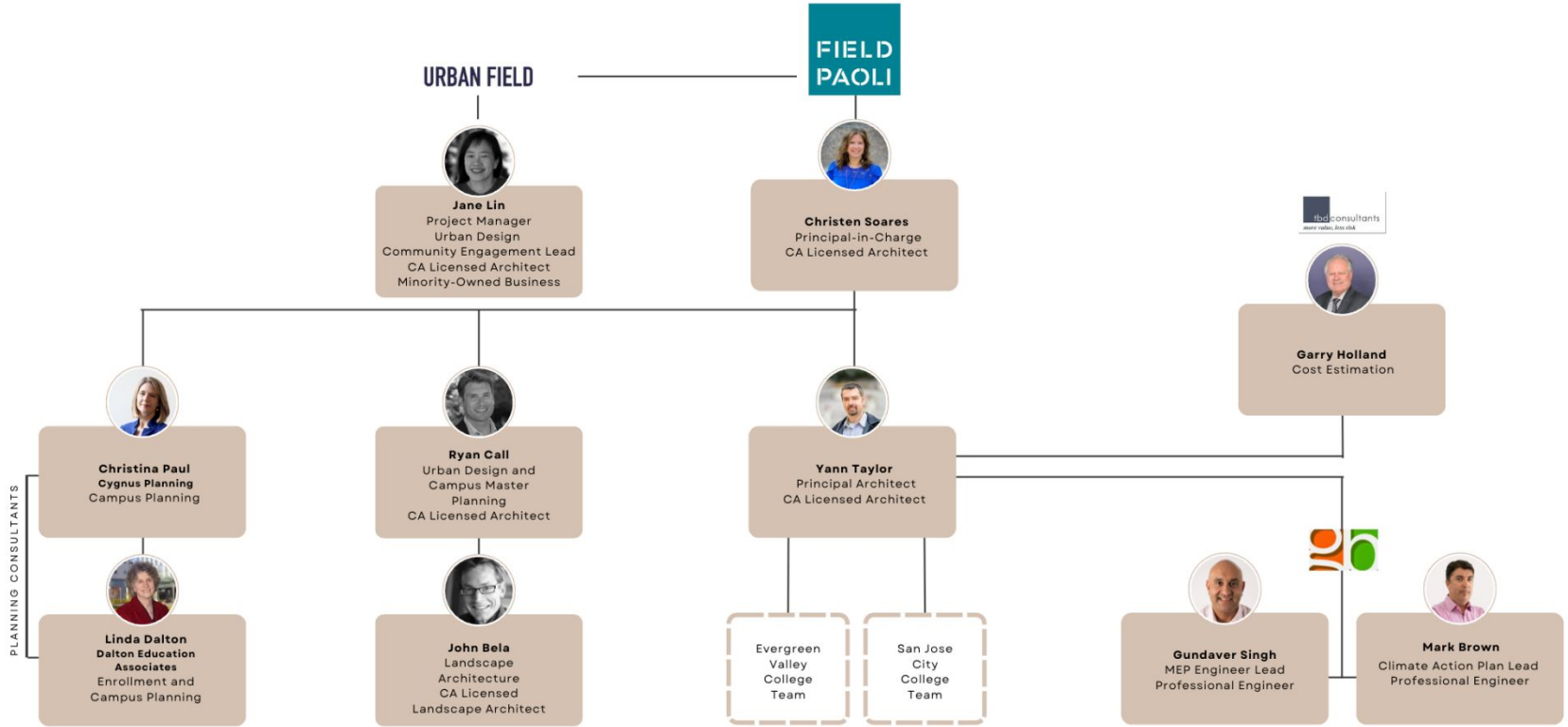
## EVC

- Angel Fuentes - Academic Division Dean
- Kathy Tran - Finance/Business Service Representative
- Michael Osorio - Student Division Dean/Director
- Garry Johnson - Faculty Representative
- Josephine Aguirre - Classified Professional Representative
- Edgar Jimenez Granados - Student Representative

## SJCC

- Misty Shroud - Academic Division Dean
- Blake Balahadia - Student Division Dean/Director
- Saloshni Chand - Finance/Business Service Representative
- Mark Branom - Faculty Representative
- Yesenia Ramirez - Classified Professional Representative
- TBD - Student Representative





# Facilities Master Plan Introduction



FIELD  
PAOLI

# STRATEGIC PRIORITIES

1

## STUDENT SUCCESS:

The San José-Evergreen Community College District will improve student success through a culture of evidence by providing structured educational pathways and continuous support services that align with their educational and career goals and promote responsible global citizenship and civic engagement.

2

## WORKFORCE AND ECONOMIC DEVELOPMENT:

The San José-Evergreen Community College District will support economic mobility of our diverse community by responding to the workforce needs of the Silicon Valley region.

3

## ORGANIZATIONAL EFFECTIVENESS AND SUSTAINABILITY:

The San José-Evergreen Community College District will develop and utilize systems that promote institutional effectiveness, fiscal sustainability, and accountability.

4

## TECHNOLOGY:

The San José-Evergreen Community College District will invest in secure information technology solutions and instructional technology that enhance the learning and working environment and support guided pathways, institutional effectiveness, and student success.

5

## COMMUNICATION:

The San José-Evergreen Community College District will engage in effective communication with internal and external audiences to improve stakeholder satisfaction.

6

## TOTAL WORK ENVIRONMENT:

The San José-Evergreen Community College District will promote a total work environment that contributes to the success and development of its students and employees.



# One District-wide Facilities Master Plan

## Facilities improvements for 2025-2035

- Programming assumptions
- A list of building improvements
- A list of public realm improvements
- Project prioritization
- Sustainability planning
- High level, order of magnitude Cost Estimates





## Evergreen Valley College

19 building,  
677,403 GSF  
175 acres  
10,564 students



## San Jose City College

21 buildings  
857,990 GSF  
58 acres  
14,385 students



## Milpitas Extension

1 building  
~24,000 GSF  
~2 acres



## San Jose Evergreen Community College District Offices

1 building  
35,000 GSF  
0.11 acres

**District TOTAL: 1.6 million GSF of building space, 160 acres of land, serving approximately 19,000 students per semester.**





# Facilities Task Force



FIELD  
PAOLI

# Facilities Task Force

The Facilities Task Force merges campus working groups to **provide input from an insider's perspective**, linking the FMP Team with important information to consider.

The Facilities Task Force Includes **champions and representatives in varying roles at both colleges** that have a commitment to facilities.



## FACILITIES TASK FORCE CHARGE

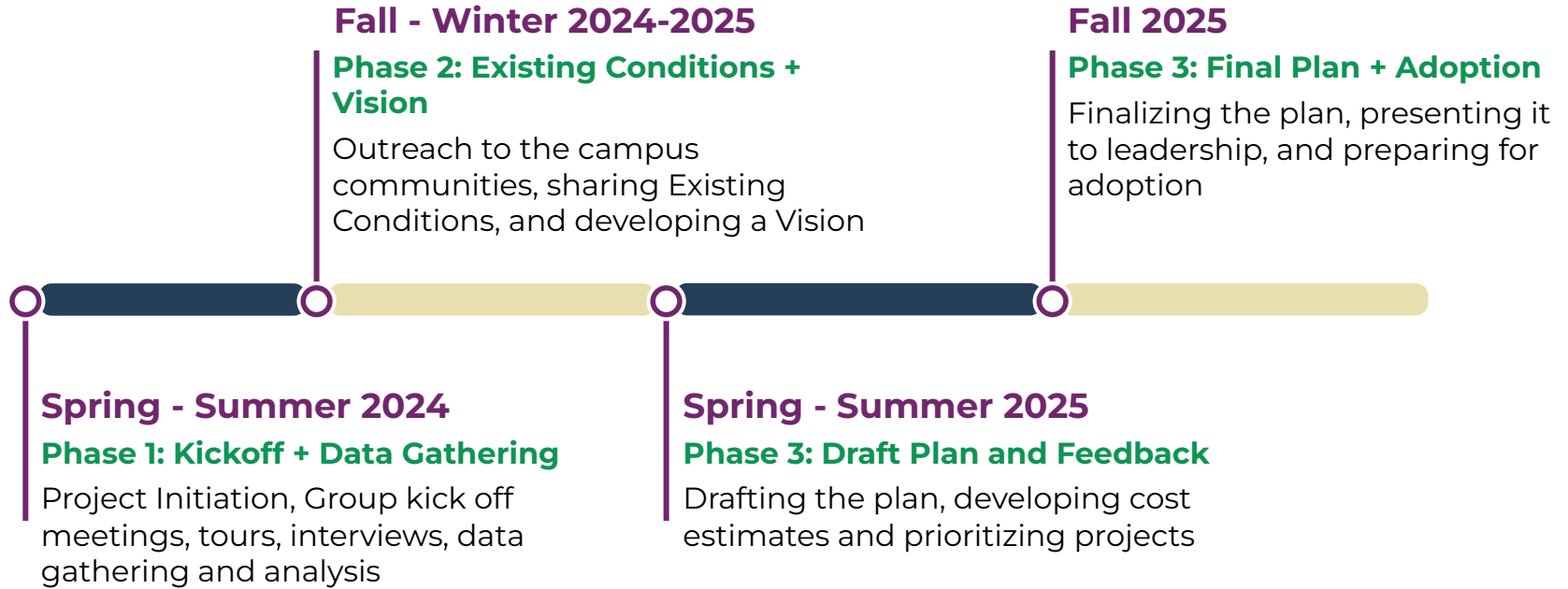
- Serves as a **representative for campuses and/or groups** to guide understanding of overall priorities, project goals, and values.
- Helps the team **connect to relevant people**
- **Shares information to campus groups** about the FMP
- **Attends FMP Task Force Meetings** (Monthly meetings will rotate amongst the campuses and online.)
- **Attends Planning Outreach events** and encourages others to participate in Planning Outreach efforts

## GROUP AGREEMENT

- Be on time. End on time.
- Pay attention to yourself and others
- Be as present as possible
- Pose Questions/ Participate
- Put ideas on the table. Respect the ideas and opinions of others.
- Provide data to support understanding.
- Work to listen and hear other people.
- Presume positive intentions with people & ideas.
- ***Do you have more to add?***



# Timeline



An aerial photograph of a school stadium. The central feature is a green football field with white yard lines and yard numbers (10, 20, 30, 40, 50, 60, 70, 80, 90). The field is surrounded by a grey running track with blue and purple lane markings. The word "JAGUARS" is written in large purple letters across the top of the field, and "JCS" is written in large purple letters on the right side. The stadium is situated on a campus with several large, modern school buildings in the background. A parking lot with many cars is visible to the right of the stadium. The overall scene is captured from a high angle, showing the layout of the stadium and its integration with the surrounding campus.

# Facilities Master Plan Outreach to Date



FIELD  
PAOLI

# Outreach to Date (Spring 2024)

## Kick off Meetings with:

- Interview with Chancellor
- Interview with PIO
- District Leadership Meeting
- EVC Leadership Meeting
- SJCC Leadership Meeting

## Survey

- Open 5/17
- Results through 5/29
- Distributed by the District and Colleges
  - To Employees
  - To Students



# Questions for EVC and SJCC Leadership

## **Enrollment**

Who makes up your campus population?  
What are trends that you are foreseeing?

## **Programming**

What are your unique programs?  
What programs are likely to evolve?  
What are you hearing from faculty or classified employees in terms of needs for programs and space?

## **General (for each campus)**

What improvements to you think EVC/SJCC need to make, specifically?  
Are there any facilities related issues that are a high priority?  
What data is important for us to know about?

## **Student Support**

In what ways do you provide student support?  
(Housing, academic support, food security, etc.)  
Are there places where student support can be improved?

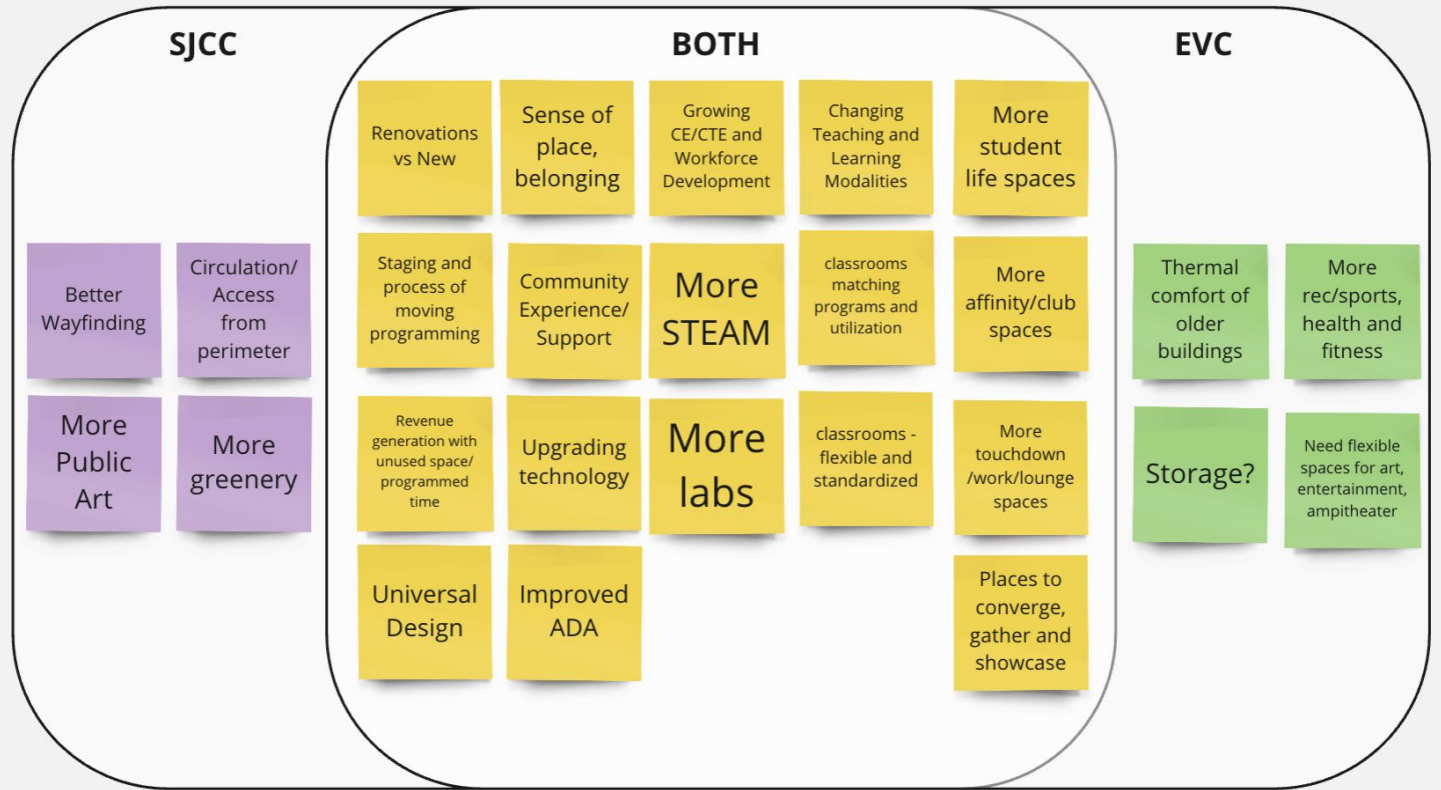
## **Sense of Place on Campus**

What facilities and spaces do people enjoy the most?  
Where are major landmarks on campus?  
Are there any opportunities or challenges that you foresee for buildings and grounds?

## **Access**

How far are students coming to campus?  
What modes do they use?  
Are there any issues with accessibility on campus?







# Survey in progress

## Questions

1. In a few words or one sentence, what should the San Jose Evergreen College District campuses be known for?
2. How can the physical campus spaces better support the needs of the campus community?

## 3. Pick your Top 3 Highest Priority Areas

- DEIAA
- Accessibility for Ability and Neurodiversity
- Affinity Group Shared Spaces (for clubs)
- Environmental Sustainability
- Modernized Classrooms
- Technology
- Laboratories
- Library
- Comfortable & Welcoming Student Spaces
- Collaboration Spaces
- Touchdown spaces between classes
- Bookstore and Convenience Retail
- Food and Beverage/Cafeteria
- Outdoor Landscape
- Health & Fitness
- Athletics
- Safety and Security
- Signage & Wayfinding
- Parking
- Other \_\_\_\_\_



# Survey Results (5/17-5/29)

## Employee/Student Group

Students	64%
Faculty	18%
Classified Staff	14%
Management & Supervisory	4%

## Location

SJCC	52%
Evergreen	43%
District Office	3%
Milpitas	2%

Total Surveys  
Responses

**517**

**391**

Provided  
Responses to  
Group and  
location  
Questions



# Top 5 Priority Areas

(# of responses)

- 1. Comfortable Welcoming Student Spaces** **101**
- 2. Modernized Classrooms** **99**
- 3. Safety and Security** **97**
- 4. Technology** **93**
- 5. Cafeteria, Vending, Retail** **75**

(other)

- *More bathrooms*
- *Athletics*
- *Wellness spaces*
- *A place for students to share ideas and debate*
- *A designated area for students to rest*

- DEIAA
- Accessibility for Ability and Neurodiversity
- Affinity Group Shared Spaces (for clubs)
- Environmental Sustainability
- Modernized Classrooms
- Technology
- Laboratories
- Library
- Comfortable & Welcoming Student Spaces
- Collaboration Spaces
- Touchdown spaces between classes
- Bookstore and Convenience Retail
- Food and Beverage/Cafeteria
- Outdoor Landscape
- Health & Fitness
- Athletics
- Safety and Security
- Signage & Wayfinding
- Parking
- Other \_\_\_\_\_



# Questions for Discussion

(We need your expertise and insight.)



FIELD  
PAOLI

## Question 1

In a few words or one sentence, what should the SJECCD campuses be known for?



## Question 2

# How can physical campus spaces support the needs of the campus community?

## Modernized Classrooms and Learning Spaces

Offer more places to study indoors other than the library. Provide more study spaces for individuals who are joining online courses on campus and do work while waiting for the next class

More lounge/study areas to support commuters.

More comfortable, padded chairs in all classrooms to provide ergonomically friendly seating for our students

Provide flexibility in all classroom with tables and chairs which are easy to move around.

Provide low-sensory rooms that can hold up to 12 to 14 students at a time with table desks and high-backed chairs, adjustable lighting, noise-cancelling walls, bean-bag style chairs, and maybe some yoga mats.



### Question 3

How can physical campus spaces support the needs of the campus community?

### Technology

Embrace Technology Integration: Ensure classrooms and common areas have reliable wifi and technology infrastructure to support modern teaching methods and student needs.

Invest in older buildings.

Our campus should reflect the technology the Bay Area is known for. We should have state-of-the-art facilities and resources our community sees throughout the city.

Use of technology for security and accessibility.



## Question 4

# How can physical campus spaces support the needs of the campus community?

## Comfortable Welcoming Student Spaces

More restrooms and more water fountains.

Daycare, food, and housing.

More yoga rooms, fitness centers. An open gym/health & fitness center

By offering flexible, accessible, and inclusive environments.

Provide spaces where students can interact beyond just going to class but still provide academic engagement and facilitate academic discussions, promoting student organizations to have events and engage among each other.

Design common areas, lounges, and cafes that encourage informal interaction and collaboration among students, faculty, and staff.

Offer more clubs and fun activities and supporting them with indoor areas for campus life.





## Question 5

How can physical campus spaces support the needs of the campus community?

**Cafeteria, Vending, and Retail**

Campus services need to be open past 7pm so they can serve students who work and study at night. For example, the library should not close so early.

I want the cafeteria to be open till 7 pm and change the snack to warm snacks in vending machine

Larger, better cafeteria options (current one no good), more vending machines,

Providing more areas where students can study freely where they are able to talk loudly and eat food. The cafeteria gets kind of busy and hard to find seats.

Bookstore needs to stay open longer than 2. We can't get supplies.



## Question 6

# How can physical campus spaces support the needs of the campus community?

## Public Realm Improvements

Provide more outdoor areas with comfortable seating, shade, and landscaping to provide a pleasant environment.

By adding more places or tables with umbrellas so that there is more shade during the hot months and having cold water available to those who need it.

By making a green, calming atmosphere to support Wellbeing and Mental Health, dedicated areas for relaxation, meditation, or physical activity.

More open grass area for activities, games, tabling, and welcome center.

More places for students to be active and doing activities outdoors campus.



## Question 7

# How can physical campus spaces support the needs of the campus community?

## Sense of Place

We are an HSI. Part of the culture is to have murals that reflect our community. Pride in heritage.

More school colors and signage to create pride at SJCC, more like EVC!

Improve the sense of belonging/identity.

Promote inclusivity in all parts of campus regardless of background, identity, and ability with bathrooms and cultural spaces.

More spaces for contemplation. A separate room at the Student Union Building for all faiths to perform prayers.

More noticeable wayfinding signage, especially for accessibility. Make pathways and access more clear (at SJCC)



## Question 8

How can physical campus spaces support the needs of the campus community?

### Safety and Security

Create safe spaces on campus

By making bathrooms which are clean, functioning, well-lighted, accessible.

Safer parking areas, Add more lighting in parking areas and along walkways

Better safety guidance and trash maintenance

Better locks, in case of need for lockdown. Make all doors keycard so that access can be controlled semester to semester and provide better security.



## Question 9

What are you hearing from faculty or classified employees in terms of needs for programs and space?

Affordable student housing. So many students want to come to SJCC, but the housing is much too expensive in this area. If we created student housing, we would have a vibrant campus life, and much more students on campus.

Rock climbing wall. Swimming Pool.

Add more large meeting spaces. Provide spaces to build community such as a conference auditorium to hold events. Spaces dedicated to events, like concerts



## Question 10

What improvements to you think EVC/SJCC need to make, specifically?

A Multi-Cultural Centre to accommodate all dedicated groups in one location adjacent to the SC/Library/Jag SC to allow interaction and cross participation maximising shared resources.

Acoustics in the library. Study desks are too big in the library.

A Museum of Science and Art with STEAM labs and classrooms and a state-of-the-art planetarium would provide access to a plethora of educational materials and resources where visitors can learn about scientific discoveries, artistic techniques, historical events, and more--in community!

A place to showcase the jewel collection



## Question 11

Are there any facilities related issues that are a high priority?



## Question 12

Who are the groups we need to include? What is the best way to share information with/reach your groups?





## Question 13

We will be touring campuses and visiting every building.

What information is important for us to know about?





# Next Steps



FIELD  
PAOLI

# Next Steps

## Fall - Winter 2024-2025

### Phase 2: Existing Conditions + Vision

Outreach to the campus communities, sharing Existing Conditions, and developing a Vision

## Spring - Summer 2024

### Phase 1: Kickoff + Data Gathering

Project Initiation, Group kick off meetings, tours, interviews, data gathering and analysis

Follow up over the summer with tours, interviews, data collection.

See you again in the Fall with:

- Existing Conditions
- Discuss initial thinking about Vision

Project Contact:  
Edwin Chandrasekar

