

SJECCD Facilities Master Plan (FMP) Existing Conditions

SJCC Classified Professionals Meeting
October 23, 2024

Agenda

- Facilities Master Plan Update: Overview
- First Impressions
- People, Programs, and Spaces
- Summary of Observations
- Q&A



Facilities Master Plan Overview



Purpose

Evaluate

- Programs, people and spaces
- The existing physical condition of campus facilities

Create a list of projects

- Identify existing spaces to upgrade/renovate, repurpose, or demolish
- Identify and locate new buildings to construct

Prioritize projects

- Determine how much can be accomplished with existing funds
- Identify how much more funding is needed

Work Completed (to date)

Leadership: Kick-off meetings and interviews in the spring

FMP TaskForce: (17 members) 2 meetings so far in June and September, (the next in November)

Employees and Students: Survey in May with over 600+ responses

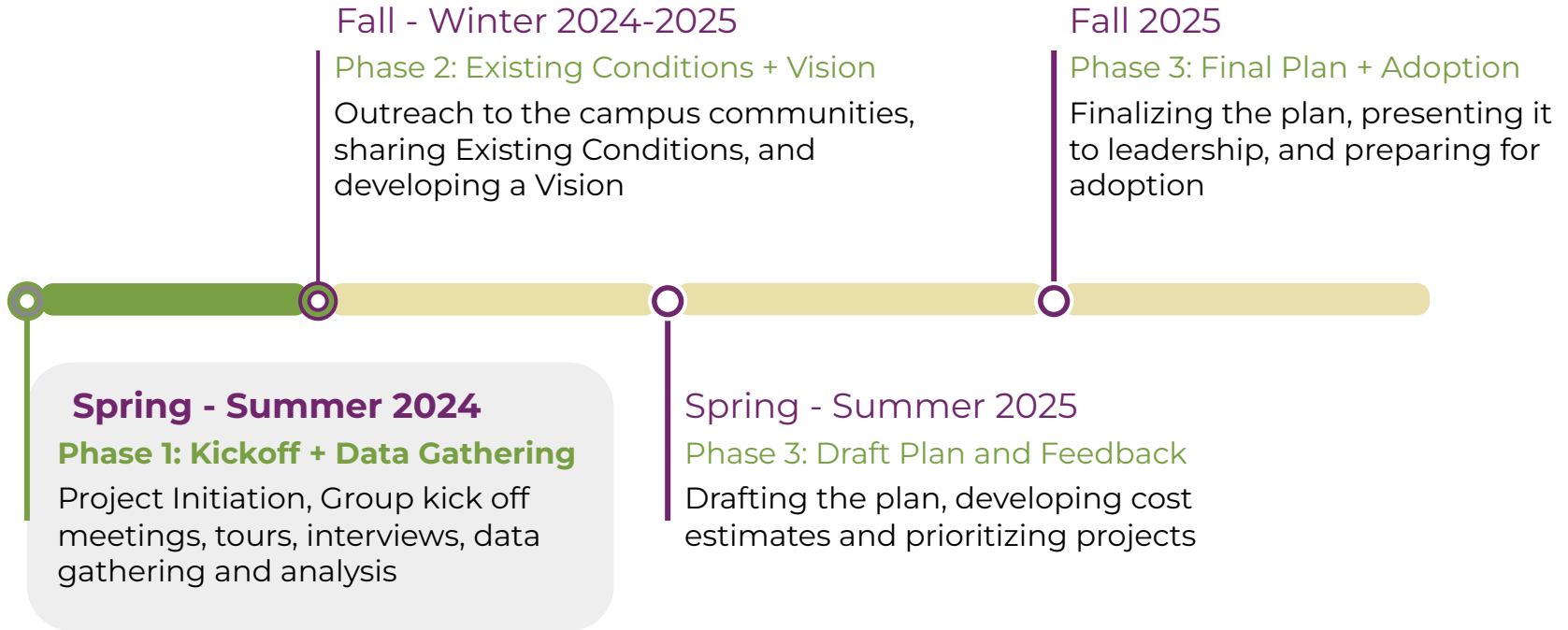
Data Gathering: Review of Enrollment, Programs/Courses, and Class Scheduling

Campus Site Tours: Public Realm, Buildings, and Mechanical Electrical Plumbing (MEP) over the summer

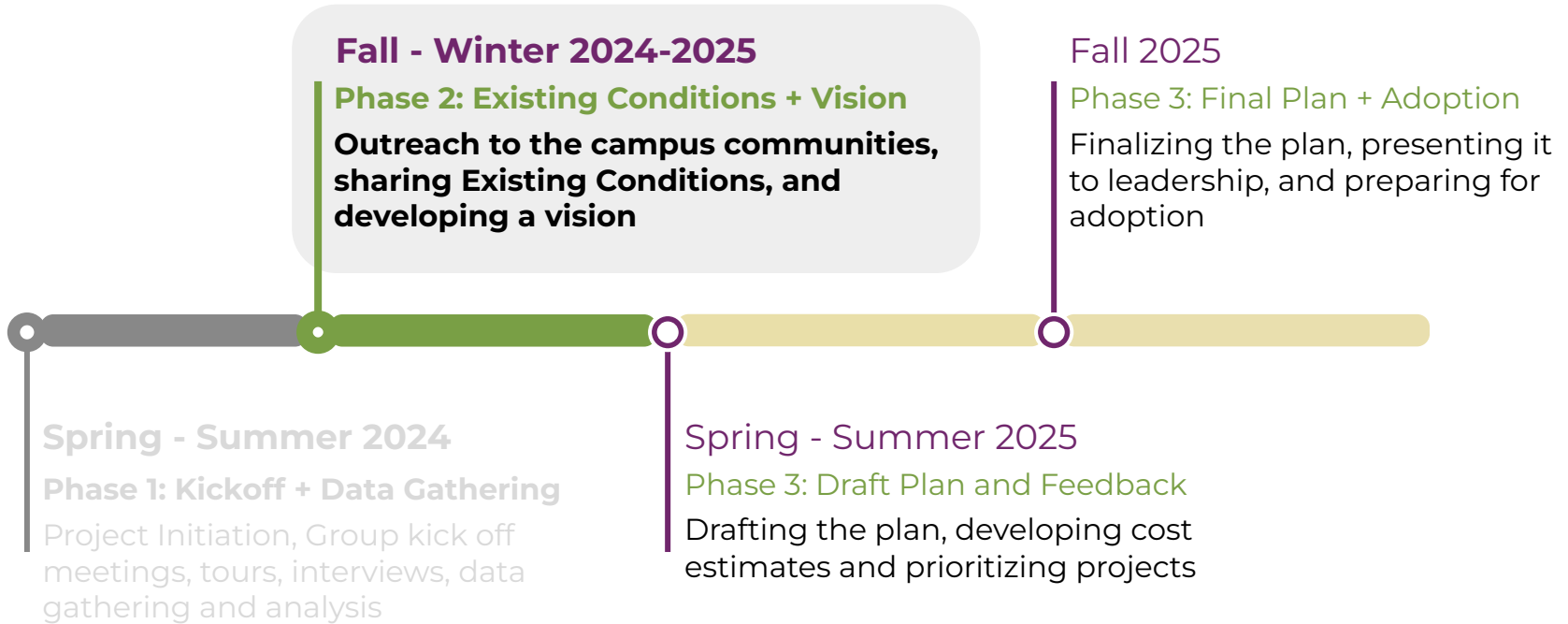
- Evergreen Valley College
- San José City College
- Milpitas Extension



Phase 1: Evaluate



Phase 2: Existing Conditions/ Potential Projects



SCIENCE COMP

First Impressions

Science Complex (S)

1st Floor	2nd Floor
Administration & Office	Art & Design
Computer Lab	College of
Faculty Office	Education
Health Center	Library North
Library South	Physical Education
Recreation	Public Safety
	Public Safety

San Jose City College



**There is plenty of space.
“It’s not a brick and mortar problem”**

Some facilities need an upgrade.



There is need for specialized equipment for certain classes.



Some facilities need more than renovation.



There is an opportunity for consolidation.



Some classrooms are being converted to serve grant-funded student-facing needs.





Outdated technology and inflexible configurations make some rooms hard to use.



Classroom FF&E (furnishings, fixtures, and equipment) is not always comfortable for all.



Now would be the ideal time to improve energy efficiency in existing buildings.



**There's enough parking, no need to build more.
But, it would be good to optimize it.**



Lots of academic space, not enough student life/ club spaces.



Student life spaces could be more strategically located on campuses.



There should be more touchdown spaces and places to go (indoors and outdoors) between classes

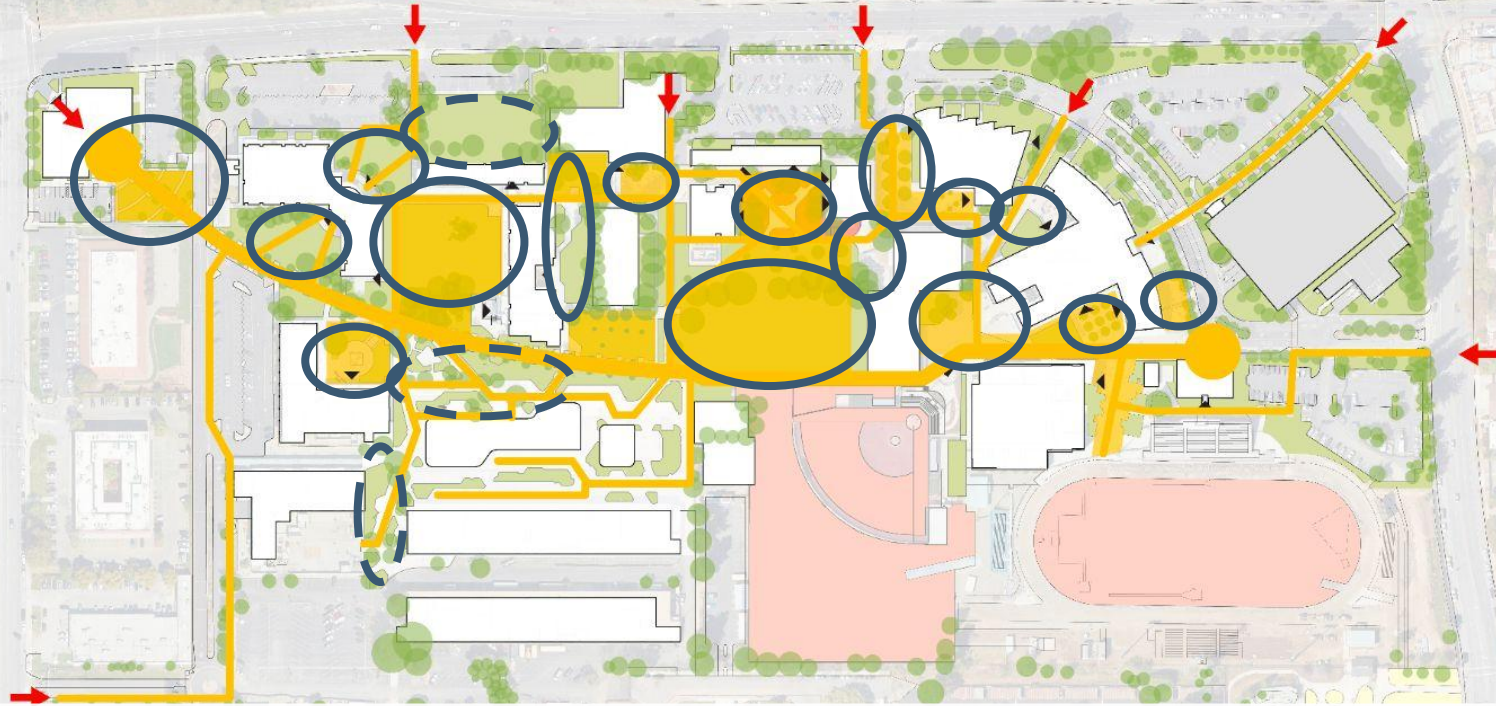


Basic needs need to be integrated in more places.



Continuing to improve ADA access on campus is important.

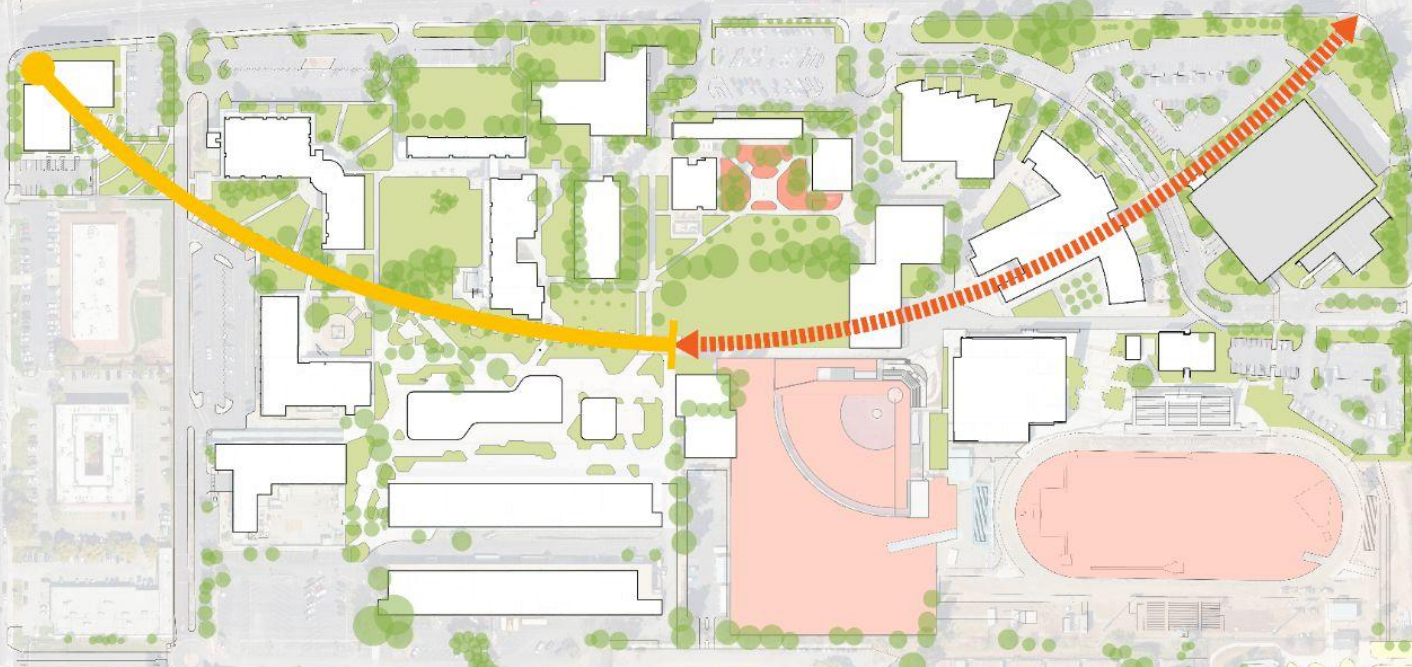




There is a lot of outdoor space. Energy across campuses is spread thin and not focused.

Improvements to SJCC's soccer field is an opportunity to connect to the community






SJCC's ceremonial axis "The Smile" needs to be completed.

SJCC's front door is missing and gateway signs are oriented the wrong way.

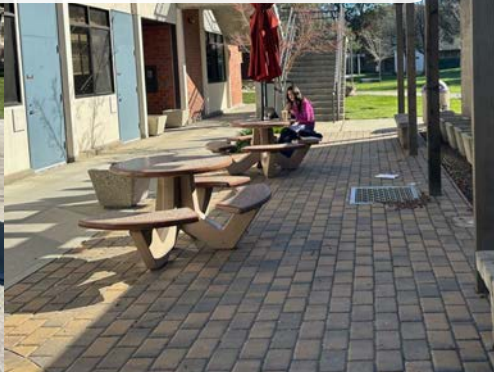


An outdoor gathering space featuring a stone wall, a wooden pergola, a red umbrella, and picnic tables. The scene is bright and sunny, with shadows cast on the ground. The text is overlaid on a white rounded rectangle in the center of the image.

Outdoor gathering spaces can be improved to make people feel more protected, comfortable, and delighted.



Multiple generations of outdoor furnishings create a sense of disorder.





The campuses look very different. Unity as a district could be strengthened.

**Replicate EVC standards
on signage, wayfinding,
and branding to SJCC .**





**The sense of place
(beyond branding) could
be strengthened.**

SAN JOSE CITY COLLEGE

**SJ
CC**

*Inspiring Students
Since 1921*

There are not enough large gathering spaces at SJCC. But, there is a flexibly designed space at the Extension.



There could be more culturally appropriate spaces and comfortable areas for socializing and studying.



Formats for food and retail are outdated and are in need of a strategy.



There's an opportunity to reimagine the bookstore.



New buildings were the focus of the last FMP. Infrastructure improvements, renovations and repurposing existing spaces will a focus in this FMP.



Did we see things the way you see things?

What is important about campus facilities, to you?

A photograph of a classroom or computer lab. Students are seated at long tables, many with laptops open. At the front of the room, a woman is standing near a presentation screen. The screen displays a slide titled "Collecting Gases-contd." with text about gas collection over water. The room has a white ceiling with recessed lights and projectors. A door with a green exit sign is visible on the right.

People, Programs, and Space

Collecting Gases-contd.

If you collect a gas sample with a total pressure of 760 mmHg, and 25% of the partial pressure of the water vapor will be 0.25 mmHg, so the partial pressure of the dry gas will be 760.4 mmHg.

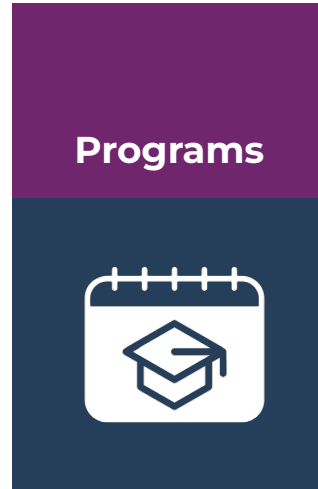
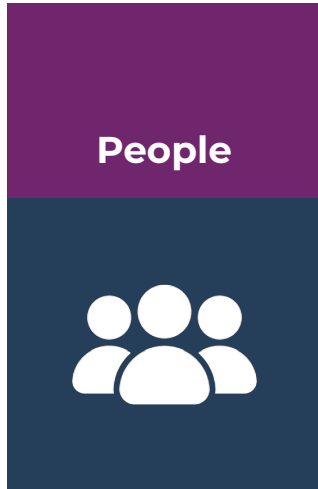
— Page 6.1

What is Space Planning?

Whom do we serve?

What do we do?

Where do we do it?



- What kind of space?
- How much?
- Where?
- Changes over time

Critical factors that affect space planning, consistent with missions and educational master plans

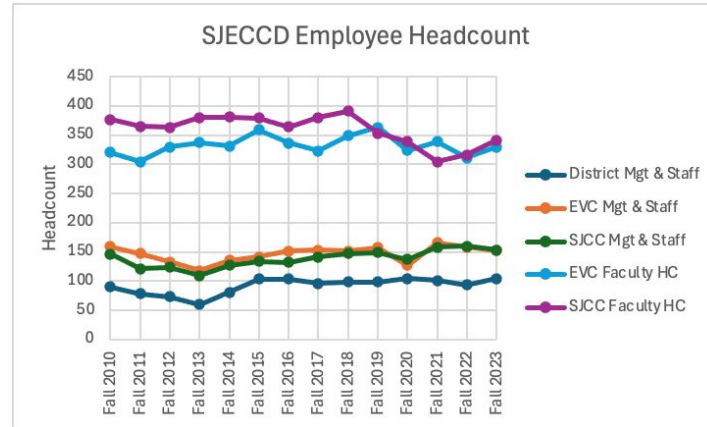
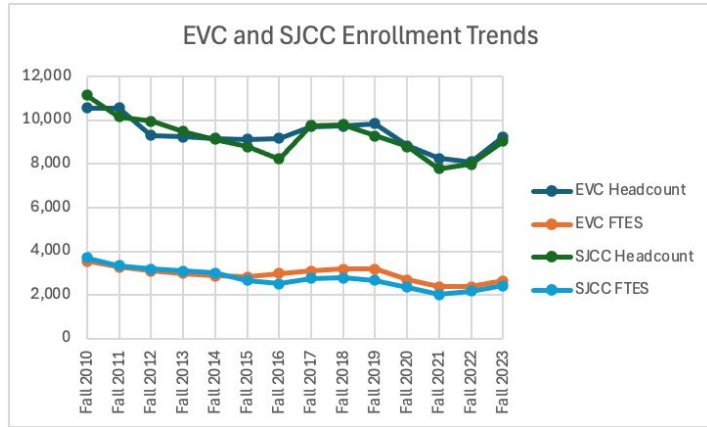
- Students
 - Future student markets given demographic changes
- Academic and Student Life & Support Programs
- Modes of Instruction
- Scheduling Patterns





Students

Large drop in students; little change in employees



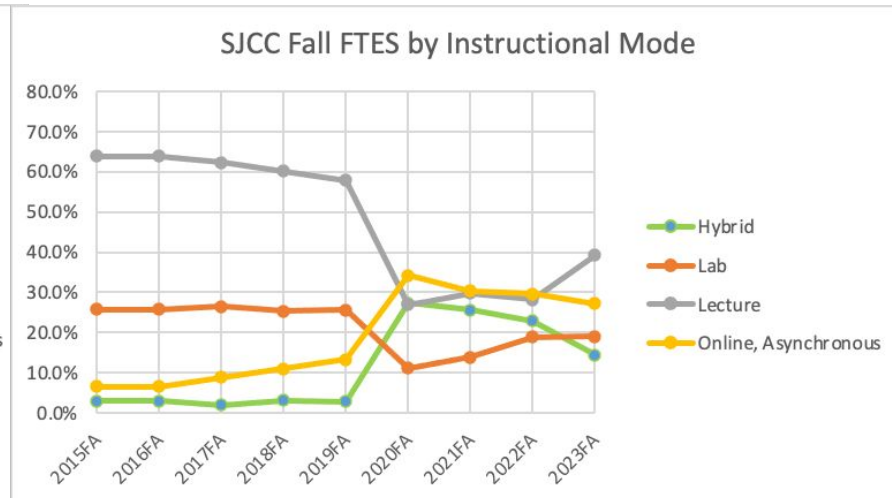
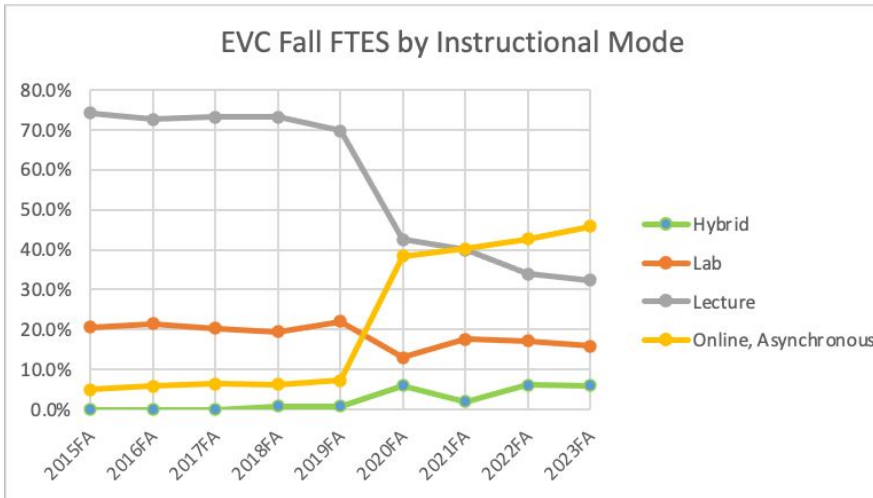
	Fall 2010	Fall 2019	Fall 2023	Change from 2010
All Employees HC	1,092	1,120	1,080	-1.1%
All Students HC	21,707	19,144	18,271	-15.8%
Total FTES	7,247.8	5,869.1	5,064.0	-30.1%



Academic Programs and Instruction

Online learning: Pandemic = Major impact on instruction

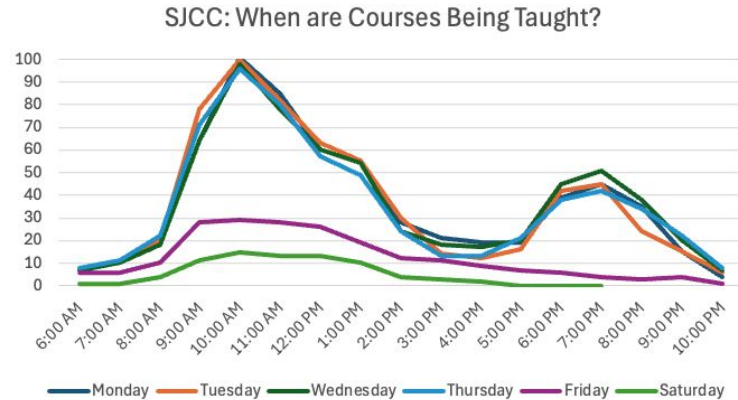
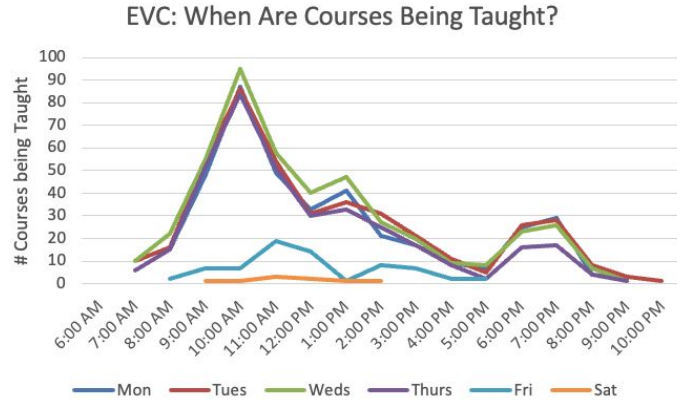
- Online instruction continues to replace many lecture courses.
- EVC has more online instruction and its increasing.
- Hybrid instruction grew to about 25% at SJCC, then declined.
- Lab instruction fell with some recovery.



A wide-angle photograph of a modern lecture hall. Students are seated at long, light-colored wooden desks arranged in a semi-circle. They are mostly looking towards the front of the room. At the front, a large projector screen displays a close-up image of a hand holding a pen. A lecturer is visible at a desk behind the screen. The room has a high ceiling with recessed lighting and two projectors hanging from the ceiling. The overall atmosphere is that of a typical university classroom.

Scheduling and Instructional Space Utilization

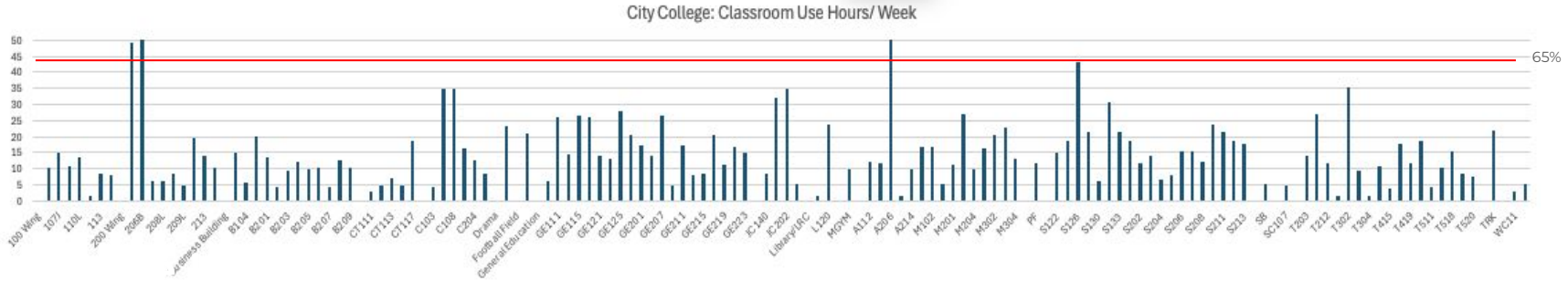
Schedules leave lots of time for more courses



- At City College and Evergreen, instruction peaks at 10am, then peters off, with another, smaller surge in the evening
- Few courses offered Friday, a handful Saturday
- There is a lot of space in the schedule for additional programming

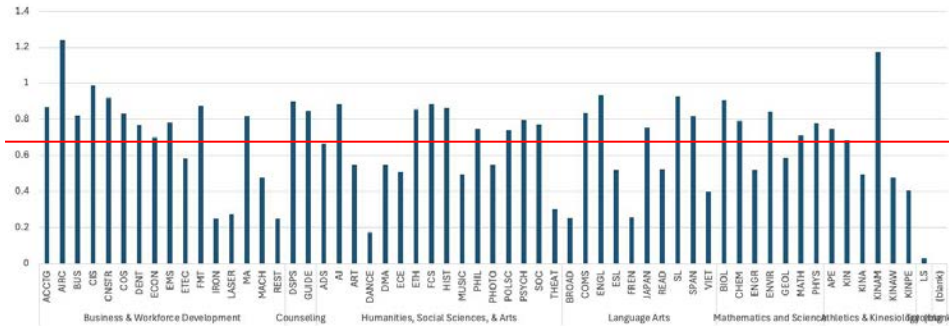
Few instructional rooms used 26 hours per week

(40 hour weeks: 65%=26 hours/week, does not show vacant/unscheduled classrooms)



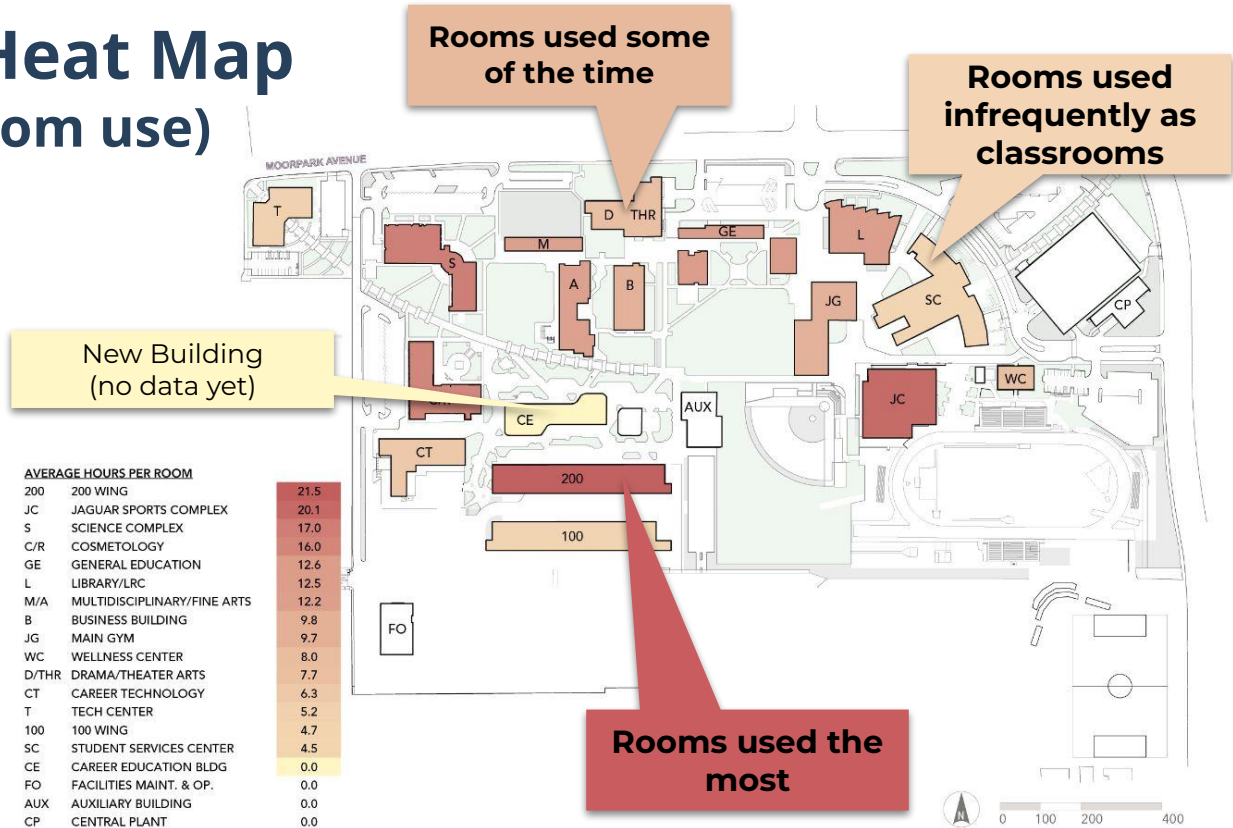
Many courses are well attended (above 65% Fill Rates)

City College



- High seat fill rates tell us there is demand for on-campus courses at both colleges
- 65% fill rates are a common goal. Red lines show the 65% line
- Some courses fill over 100%
- Foundational courses commonly have waiting lists

City College Heat Map (instructional room use)



The average number of hours instructional rooms are used ranges from 21.5 - 4.5 hours per week

Look at options and scenarios for facility use

- Explore **space management scenarios**
 - There is a lot of space! How can spaces be used more effectively?
- What does it take to have a **vibrant campus**?
 - Consider **bringing more students back** on campus
 - Create **centers of activity**.
 - Allocate more space for **student life and student support** programs.
 - Hold more **events for online students**.
 - Host events for the **campus or local community**.
- Look into **revenue generation**
 - Make space available for outside use.



The FMP is an opportunity to get creative about campus spaces

New buildings were the focus of the last FMP.

Infrastructure improvements,

repurposing existing spaces, and

renovations will be a focus in this FMP.

Making infrastructure improvements to operate more effectively

- Address maintenance needs
- Increase efficiency of buildings operations
- Consolidate the use of spaces

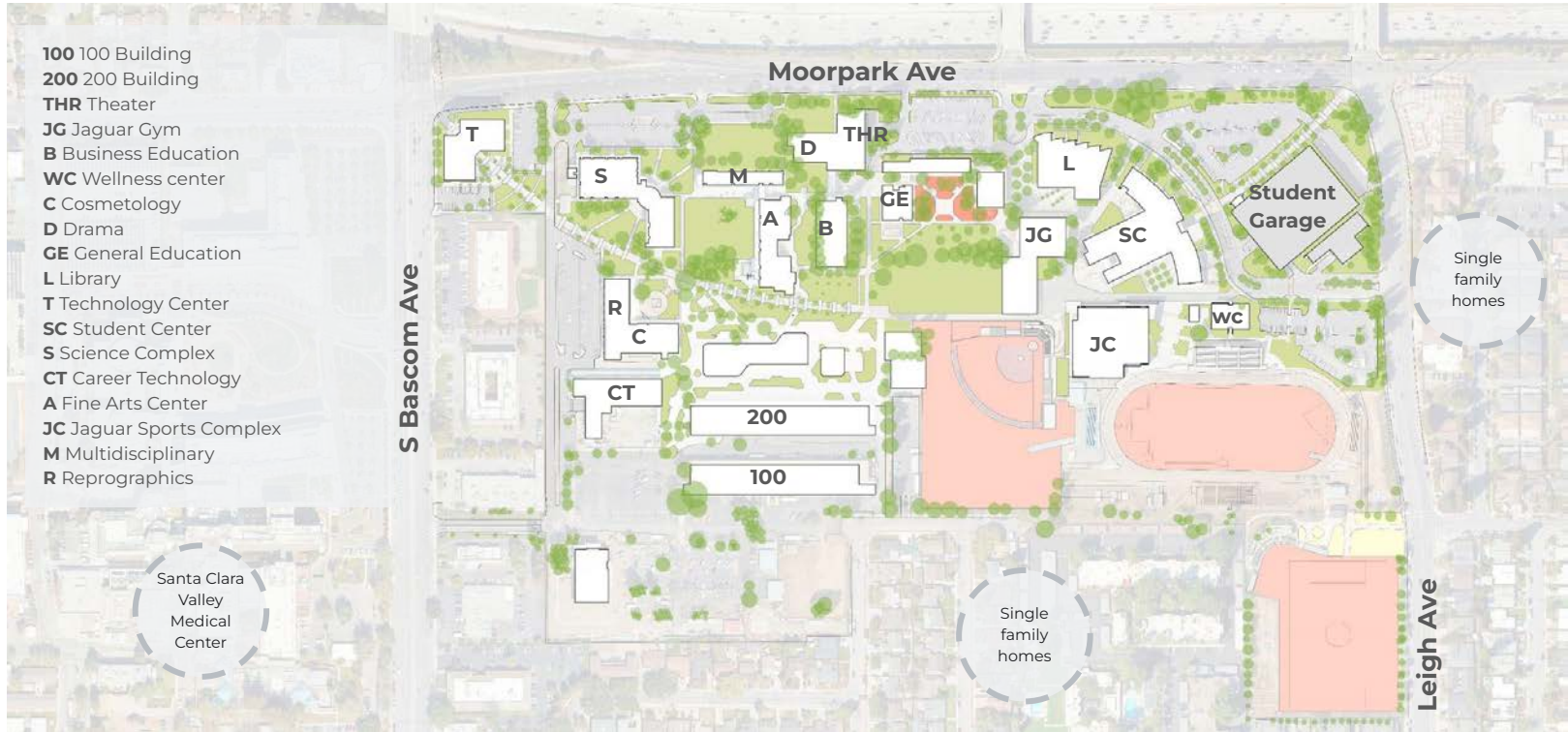
Repurposing existing spaces to improve campus life

- Support needs for gathering, studying, and club spaces

Renovating spaces to improve the way we learn

- Upgrading **specialized labs/spaces** with unique or state-of-art technology.
- Supporting **online and hybrid learning** through broadcast rooms or similar facilities.

We will address facility needs over the next 10 years. What is important to students and the total work environment?





Questions?

↑ Math, Science &
Social Sciences
Sports Fields
Tennis Courts
Parking Lot 6